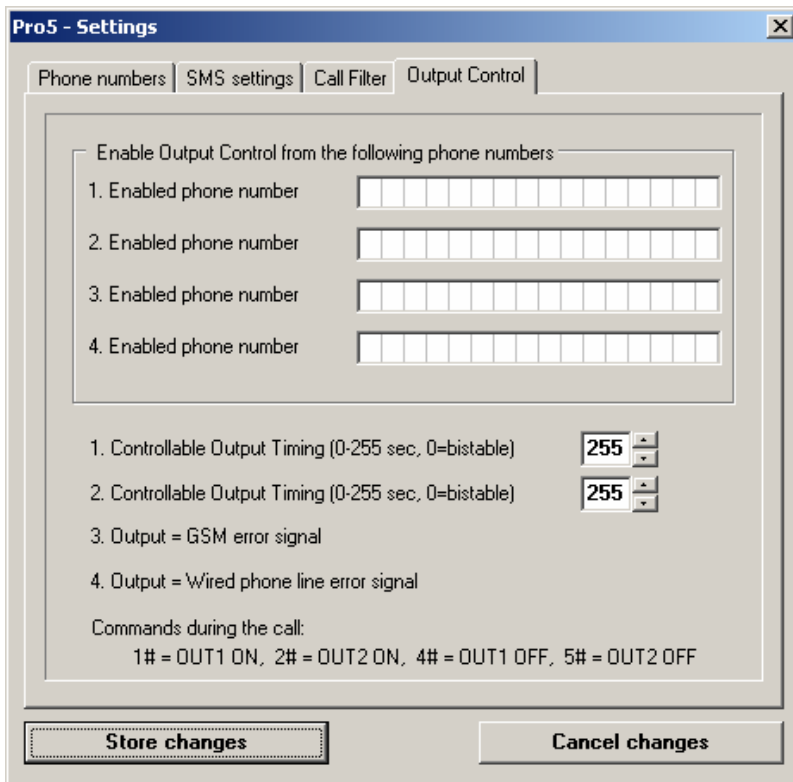


- Unos brojeva koji mogu da kontrolisu dva izlaza



Komande kojima se kontrolisu izlazi 1 i 2

1# - turn on OUT1 2# - turn on OUT2
4# - turn off OUT1 5# - turn off OUT2

Tehnicke specifikacije

Supply voltage: 9-24V DC

Maximum power consumption: 500 mA

Operational temperature: between -10 °C and + 60 °C

Transmission frequency: GSM 900 MHz / PCN 1800 MHz

Dimensions: 127x86x27 mm

Net weight: 70 g

Gross weight (packed): 400 g

• Outputs OUT1, OUT2, OUT4, OUT4:

- open collector outputs
- current max 100mA
- allowed smallest load: min.150 Ohm
- it is necessary to use protecting diodes in case of using relays * (e.g. 1N4004)

