

# Wireless Access Points & Controllers



Pakedge Wireless Networks provide enterprise grade wireless networking to users reliant on high speed, high throughput, and long range. Pakedge wireless access points provide up to 3x the range of traditional access points and come in multiple form factors, ensuring easy installation in any scenario. The C36 Wireless Controller synchronizes and manages multiple access points in real-time - ensuring a fully unified wireless system.

## Enterprise Grade Wireless

An enterprise grade wireless solution is composed of wireless access points and a controller - the command and control hub for the network's APs. Pakedge wireless access points offer a high-power solution for any network, broadcasting 802.11b/g/n signals at 800mW. These wireless access points can be installed almost anywhere, thanks to their ability to be powered by PoE and multiple, use-case specific form factors. Multiple SSIDs prioritize data traffic, providing a smoother wireless experience overall. A separate guest network gives internet access to visitors without compromising overall security.

# C36 Wireless Controller

## Wireless Harmony

The C36 Wireless Controller serves as the command, coordination, and control center of a wireless network with multiple access points. In a network without a wireless controller, the wireless access points are unaware of each other and act independently - resulting in sub-optimal network performance, coverage gaps, and unreliable connectivity. AP (Access Points) settings may not be applied consistently throughout the network - leading to inconsistent policy application and enforcement, and potential problems with rogue access points and devices.

The C36 eliminates these problems by working in conjunction with up to 30 W6x and W7x Wireless Access Points. It provides seamless, scalable, reliable wireless network access by managing each access point and optimizing wireless coverage with a suite of performance enhancing technologies.

## Key Features

### Optimized Wireless

The C36 provides optimized wireless performance - enhancing speed and coverage while mitigating interference.

### Enhanced Security

The ability to push security settings across the network integrated individual device blocking and broadcast scheduling to provide a unified, secure, wireless network.

### Simple Management

Configure up to 30 APs from any device on the network, all on one page.

### Fast Deployment

Automatic detection and configuration of APs, site surveys, a GUI wizard, heat maps, and visualization tools make expanding a network simple.

### Centralized Reporting

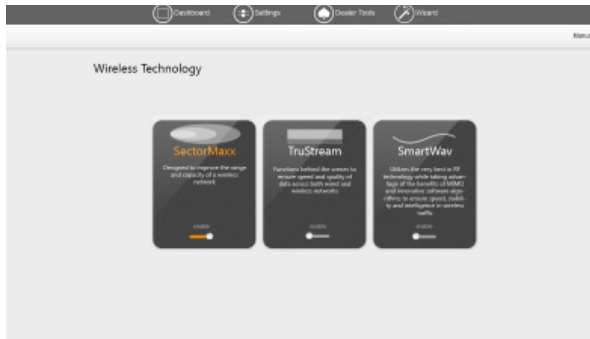
Quickly and easily obtain information about any access point or client device on the network from anywhere in the world using BakPak Cloud mobile and web apps.



# C36 Wireless Controller

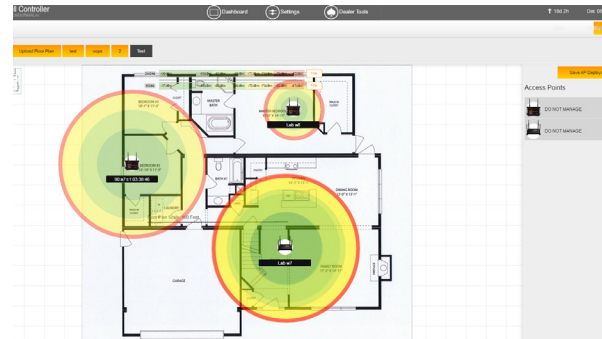
## Advanced Features

### Performance Enhancements



Speed, coverage, and interference are optimized with SectorMaxx, TruStream, and SmartWav wireless technologies.

### Heat Mapping



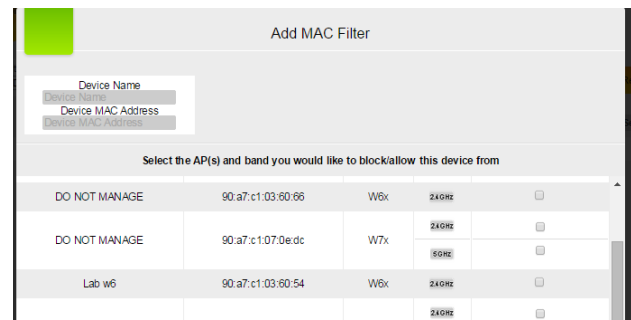
Drag and drop access points to real-life floorplans to see how to get the best wireless coverage with your unique setup.

### Site Survey



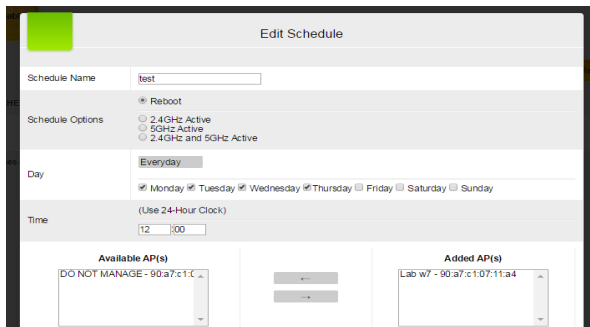
Perform automatic site surveys to view channels, signal strength, and identify rogue APs.

### Device Blocking



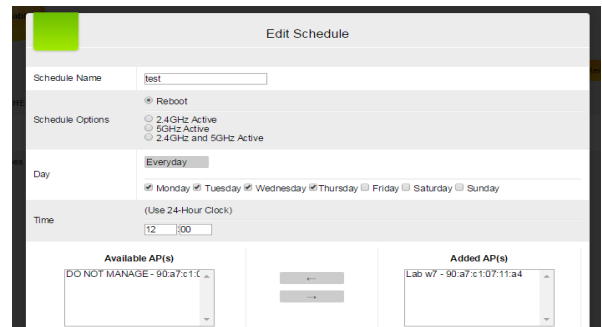
The C36 can blacklist or whitelist specific MAC addresses - allowing users to block unwanted devices specifically - or only allow known devices for added security.

### Wireless Scheduling



Schedule when APs broadcast - limiting access to specified times and days of the week.

### Guest Network



Easily configure fully secure guest networks across all APs.

# W6x Wireless Access Points

## Single-Band Wireless

The W6x family of ultra-high powered access points is designed to provide a versatile, high power 802.11b/g/n wireless solution capable of providing best-in-class wireless coverage in any scenario. The W6 supports 4 SSIDs and 2 guest networks.

Designed with four form factors - desktop/wall-mount, rack-mount, in-ceiling, and outdoor - the W6x series of access points is an ideal way to implement a wireless network.

### W6 Wall Mount/Desktop



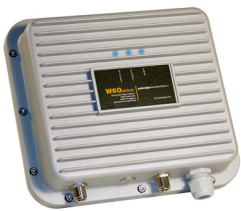
- Fast installation flanges for quick and accurate wall-mounting
- External high dB omnidirectional antennas for maximum range and stability
- Rugged aluminum housing designed for maximum protection from interference and efficient cooling in attics, basements, and wiring closets.

### W6C In-Ceiling



- Patented, innovative, swing-out in-ceiling housing design
- Backplate heat-sink designed for in-ceiling operation, even in attics where temperatures fluctuate.
- Embedded flat PCBA antennas for clean, aesthetic performance
- Software-controlled LED off feature for visually unobtrusive operation

### W6O Outdoor



- Sealed, heat finned, IP67 rated diecast aluminum housing built to withstand even the harshest outdoor environments
- High gain omnidirectional antennas for maximum range and stability
- Software controlled LED-Off feature for visually unobtrusive operation

### W6R Rack Mount



- 1U rack-mountable housing designed for high wireless-N throughput
- Symmetrical mount brackets for rack mounting, wall mounting, or under-cabinet mounting. Underside key holes allow wall mounting
- External high dB omnidirectional antennas for maximum range and stability
- Rugged aluminum housing for maximum protection from interference

# W7x Wireless Access Points

## Dual-Band Wireless

The high-powered dual-band W7x access point runs on both the 2.4 and 5GHz bands, reducing interference compared to access points that operate on the 2.4GHz band alone.

The 2x2 setup of the W7 enables 300Mbps throughput - up to 3x the throughput of traditional

wireless-N access points - while still supporting legacy devices. Supporting up to 16 SSIDs, it's ideal for high-capacity installations. All Pakedge APs can be powered by PoE - enabling easy setup without the concern for rewiring or available wall ports.

### W7 Wall Mount/Desktop



- 4 high dB omnidirectional antennas
- Fast installation flanges for quick and accurate wall mounting
- Rugged aluminum housing designed for maximum protection from interference & efficient cooling regardless of the installation location

### W7O Outdoor



- Sealed, heat finned IP67 rated diecast aluminum housing to withstand even the harshest outdoor environments
- Power by either PoE or A/C outlet for convenient installation
- High gain omnidirectional external antennas for maximum range and stability

### W7R Rackmount



- Symmetrical rack brackets for rack, wall, or under-cabinet mounting
- External high dB omnidirectional antennas for maximum wireless range and stability
- Rugged aluminum housing designed for maximum protection from interference and efficient cooling in rack installations

# Access Point Specifications

Access Point	W6	W6C	W6R	W6O	W7	W7R	W7O
Wireless Protocols	802.11b/g/n	802.11b/g/n	802.11b/g/n	802.11b/g/n	802.11a/b/g/n	802.11a/b/g/n	802.11a/b/g/n
Wireless Band	2.4GHz	2.4GHz	2.4GHz	2.4GHz	2.4/5GHz	2.4/5GHz	2.4/5GHz
Transmission Power	29dBm on 2.4Ghz	29dBm on 2.4Ghz	29dBm on 2.4Ghz	29dBm on 2.4Ghz	29dBm on 2.4Ghz, 29dBm on 5Ghz	29dBm on 2.4Ghz, 29dBm on 5Ghz	29dBm on 2.4Ghz, 29dBm on 5Ghz
Antennas	1x1 Omnidirectional	1x1 Omnidirectional	1x1 Omnidirectional	1x1 Omnidirectional	2x2 Omnidirectional	2x2 Omnidirectional	2x2 Omnidirectional
C36 Compatible	✓	✓	✓	✓	✓	✓	✓
Housing	Anodized Aluminum	UL Rated ABS Housing	Anodized Aluminum	IP67 Heat Finned Aluminum	Anodized Aluminum	Anodized Aluminum	IP67 Heat Finned Aluminum
Power Options	PoE, AC	PoE, AC	PoE, AC	PoE	PoE, AC	PoE, AC	PoE
Operating Temperature	0° - 50°C (32° - 122°F)	0° - 50°C (32° - 122°F)	0° - 50°C (32° - 122°F)	-10° - 50°C (32° - 122°F)	0° - 50°C (32° - 122°F)	0° - 50°C (32° - 122°F)	-10° - 50°C (32° - 122°F)
Dimensions (LxWxH)	6.4 x 4.2 x 1.4"	Diameter - 8.25 Depth - 2 Cutout Diameter - 7"	7.5 x 5.5 x 1.75"	11 x 9.5 x 2.5"	9.1 x 6.25 x 1.5"	11.25 x 5.6 x 1.75"	10.6 x 9.5 x 2.9"
Weight (lbs)	0.56	1.4	1.1	5	1.1	3.2	8.4

## Package Contents

Wireless Access Point, Ethernet Cable, Rack/Wall Mounting Hardware, Power Cable and Quick Start Guide

# C36 Specifications

## Interface

Total Network Interfaces	2
Auto MDX auto-sensing 10/100/1000 (Copper, RJ-45)	1
Console Port (Copper, RJ-45)	1
USB Interfaces	2 (USB 2.0)
HDMI Interfaces	1

## Dimensions

Height x Width x Depth	1.675in x 17.026in x 9.202in (4.254cm x 43.246cm x 9.202cm)
Weight	7.35lbs (3.33kg) - Controller 9.7lbs (4.39kg) - Packaged
1U Rack Mountable	Yes

## System Performance

Managed APs	Up to 30
WLANs	Depends on AP

## Multimedia & Quality of Service

802.11e/WMM	Supported
Client Load Balancing	Supported (v2)
Client Capacity Limit	Supported (v2)
Suppressed SSIDs	Supported

## Environment

Power Input	110-240v AC
Power Consumption	55w
Operating Temp	0° - 40°C (32°-104° F)
Operating Humidity	95% non-condensing
Storage Temp	-20° - 80°C (-4°-176° F)
Storage Humidity	95% non-condensing

## Management

Configuration	Web user interface, CLI, SNMP v1,v2, v3
AAA	RADIUS (v2)
AP Provisioning	Auto-upgrade, Auto channel & power optimization, VLAN tagging, Spanning Tree, Heat Map (v2)
Centralized Management	Supported
Centralized Reporting	Supported

## Security

Standards	WEP, WPA, WPA2, IPv4, IPv6, PSK (v2), AES
Intrusion Detection	Rogue AP Detection
MAC Filtering	Supported
Guest Network	Supported

## Package Contents

C36 Wireless Controller, Console Cable, Rack Mounting Hardware, Power Cable and Quick Start Guide