

## Rexon DEA 3 Gate - Bike

The REXON DEA 3 Gate- Bike is a full height turnstile with integrated bicycle gate, ideal for locations where the unmanned access of people and goods is required. The Rexon DEA 3 Gate can be used for both indoor and outdoor use and is available in different finishes to match the required environment.

### MAIN FEATURES

- Double-brake system for total security in combination with motor-driven unit
- Allows access for bicycles and small motor bikes
- Provides a high level of safety – in the event the turnstile detects an obstruction it will stop moving
- Silent and fluent running

### DIMENSIONS

Unit height: 2465mm  
Unit width: 2330mm  
Passage height: 2100mm

### NUMBER OF WINGS

3 Wings (120°)

### PASSAGE WIDTH

Passage Width: 620mm  
Bike passage width: 540mm  
Small motorbike Passage width: 730mm

### FRAME

Hot-dip zinc galvanised, powder coated finish in RAL colour

### CENTRAL COLUMN/ BARS

Hot-dip zinc galvanised

### TOP PANEL

Hot-dip zinc galvanised, powder coated finish in RAL colour

### BARRIER TYPE

11 Tubular bars Ø 40mm (with black plastic covering caps)

### POWER SUPPLY

13.8V DC/ 24V AC/ 230V AC



### COMMUNICATION INTERFACE

RS485/ USB/ Ethernet

### RANGE OF OPERATING TEMPERATURE

-20°C to +50°C (IP 65)

### OPERATING MODES

Operating modes can be configured in either direction.

1. Free Passage (in/out)
2. Access Controlled Passage
3. Permanently locked

### OPERATING ENVIRONMENT

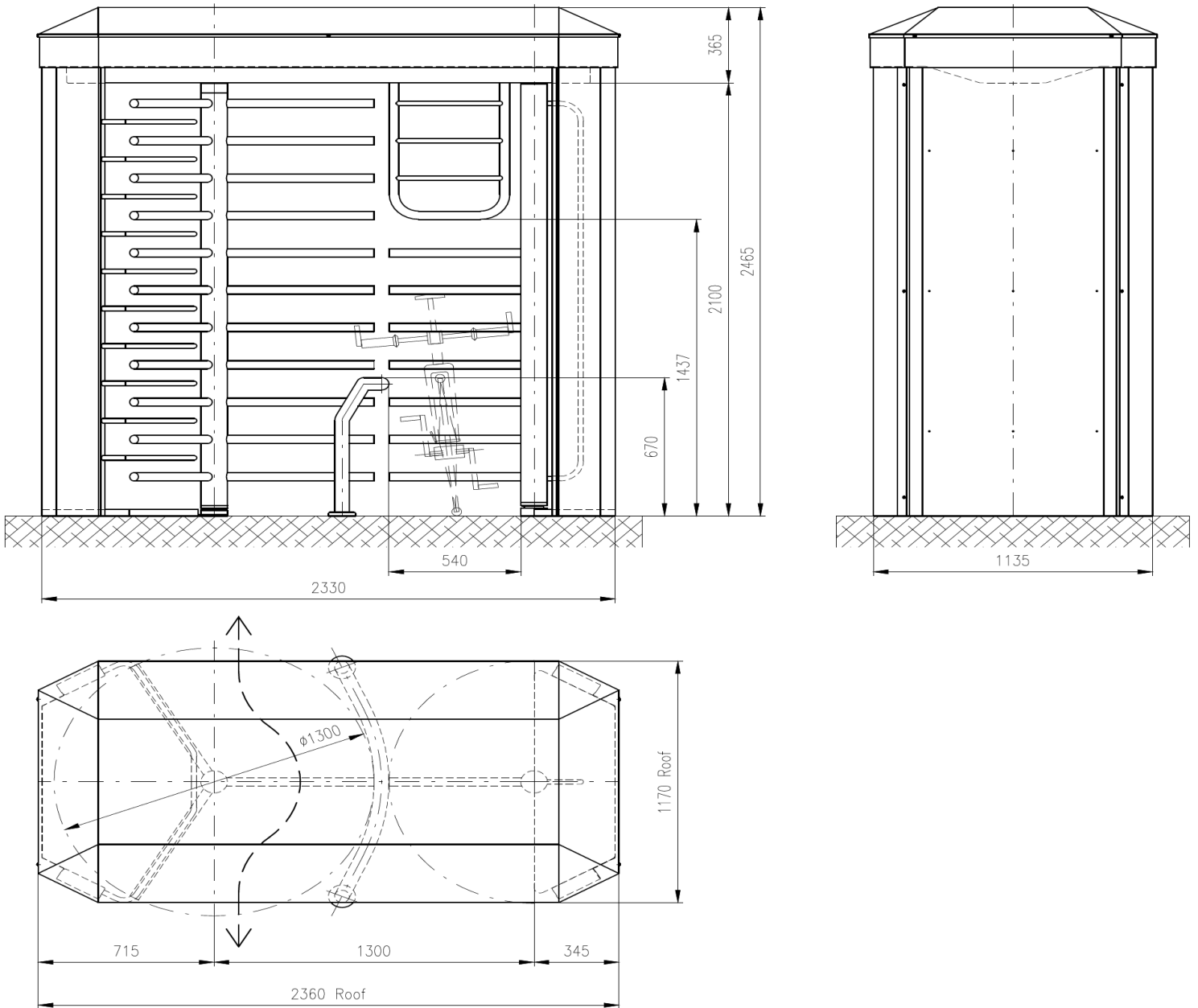
Indoor/ outdoor

### EMERGENCY MODE

On emergency release Fail Safe will put the turnstile into free flow in both directions

## OPTIONAL ACCESSORIES

- LED lane light
- Integrated 3rd party terminals
- Passageway light
- Induction loop/ controller
- Ramp LT
- Solid steel ended bars
- Mounting frame
- Economy version with hot-dip galvanized steel rotor and tube



As our policy is to continually improve the products we offer, we reserve the right to amend specifications without prior notice. Further product drawings are available on request