

Figure 14-8

Step 4. Time template list update is shown below.

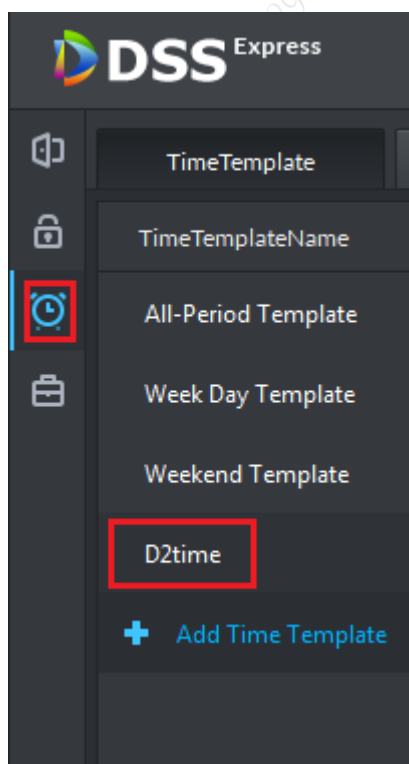


Figure 14-9

14.3 Access Control Console

In console, you can unlock, lock, open video (must set linked channel in door config first) and etc. plus right click to remotely unlock/lock, set door and etc.

14.3.1 Door Config

Door config module can set door channel name.

Step 1. Enter Access Control module console, on the left, select one access control channel and right click mouse. In pop-up menu, select Door Config to enter config page. See Figure 14-10.

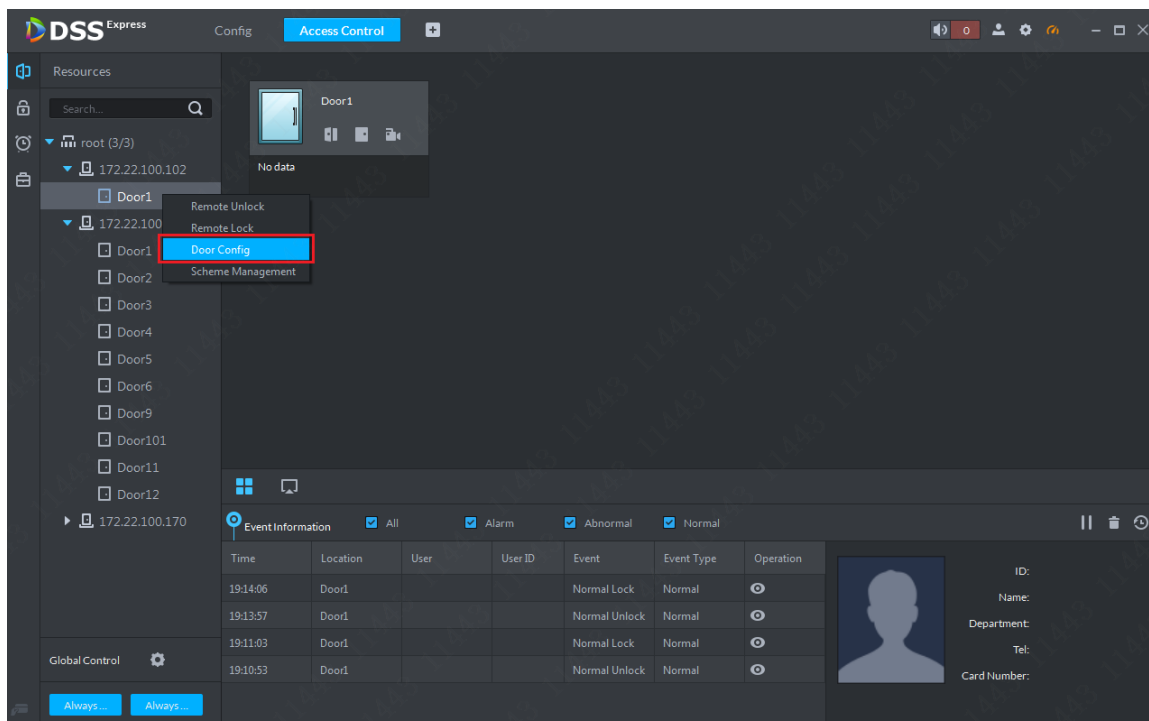


Figure 14-10

Step 2. Access control channel config page is shown in Figure 14-11. Please set parameters accordingly, and click “OK” button to complete setup and enter config homepage.

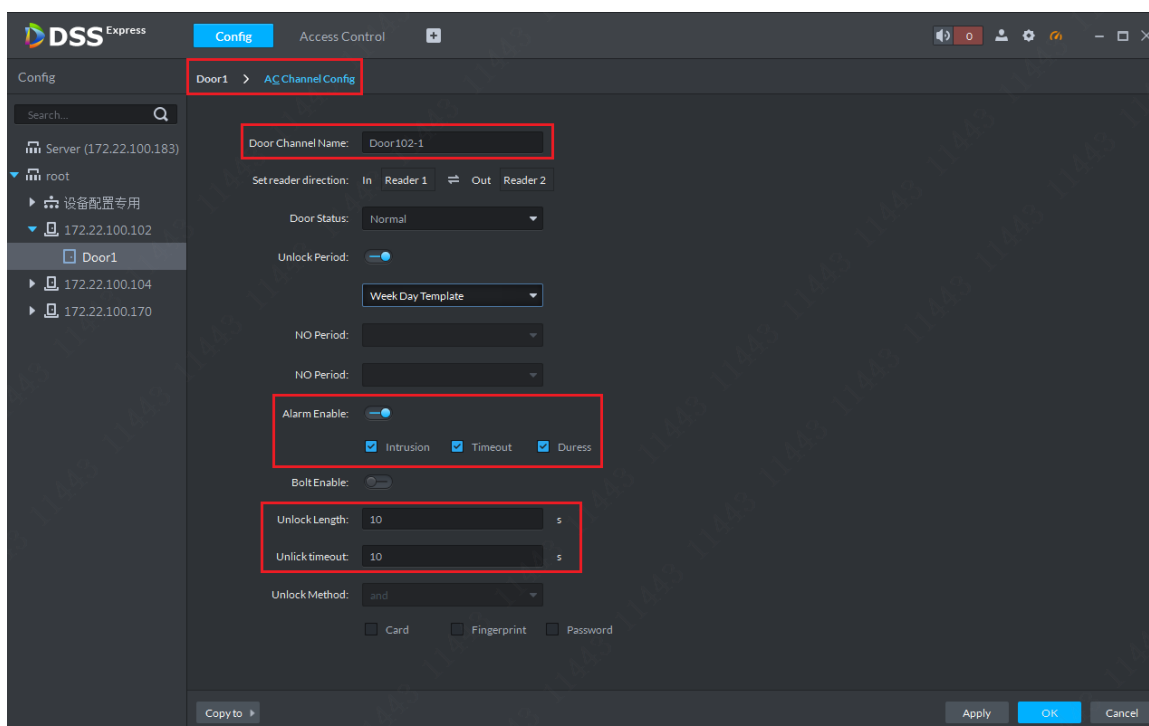


Figure 14-11

Step 3. In config homepage, click Resource Bind to enter video channel bind page. See Figure 14-12.

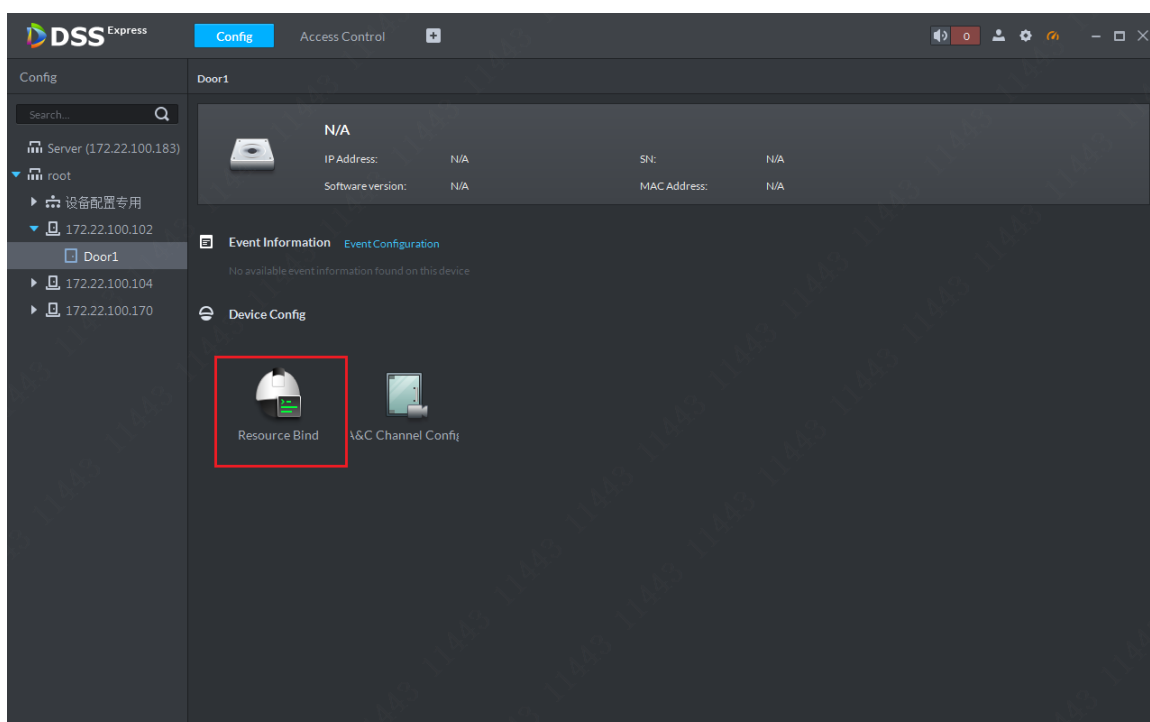


Figure 14-12

Step 4. Video channel bind page is shown, please select video channel and click “OK” button.

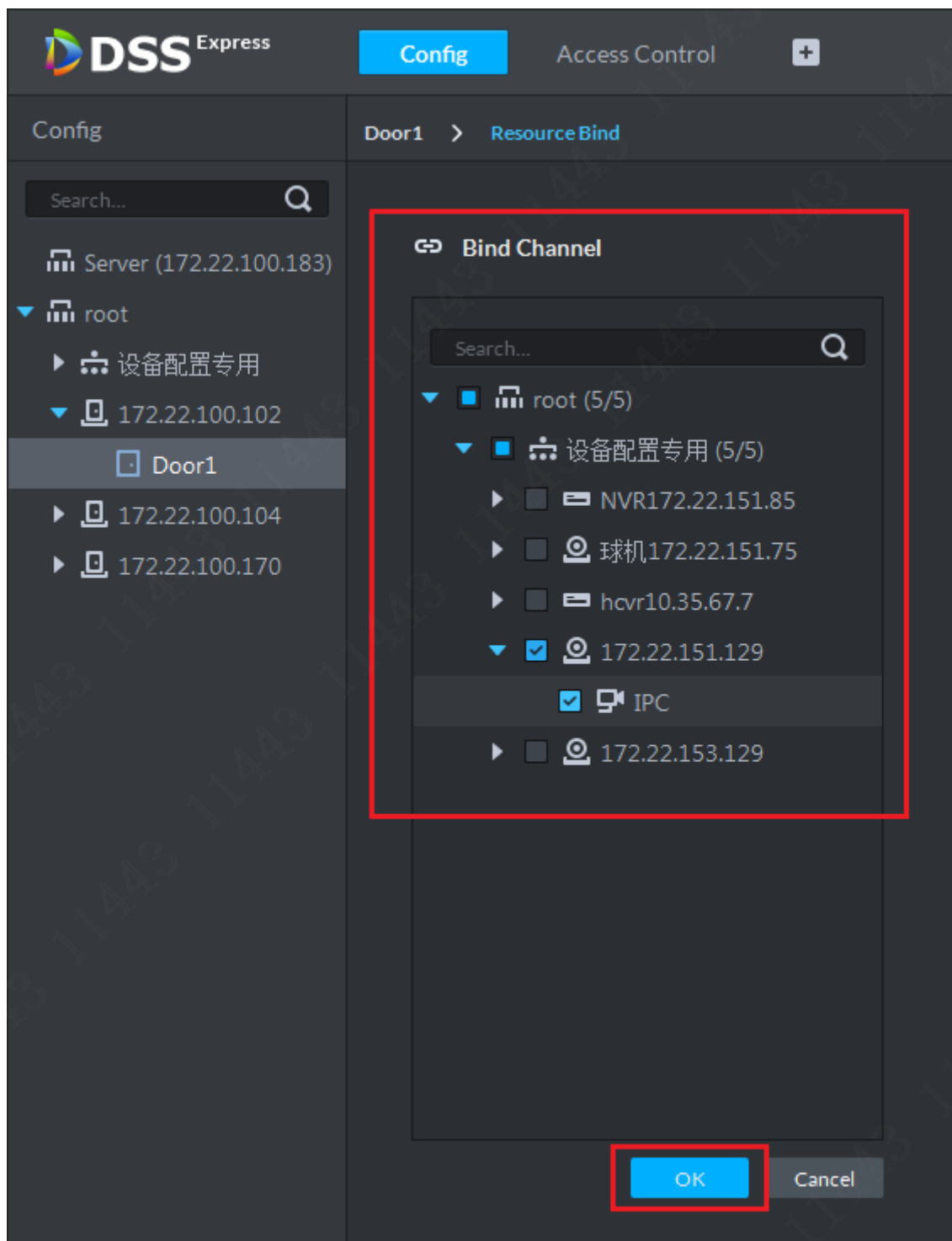



Figure 14-13

14.3.2 Access Control Channel Control

Step 1. Unlock door. Enter access control module console, on the left, select access control channel and then on the right, click unlock button , it will generate corresponding unlock record. See Figure 14-14 and Figure 14-15.

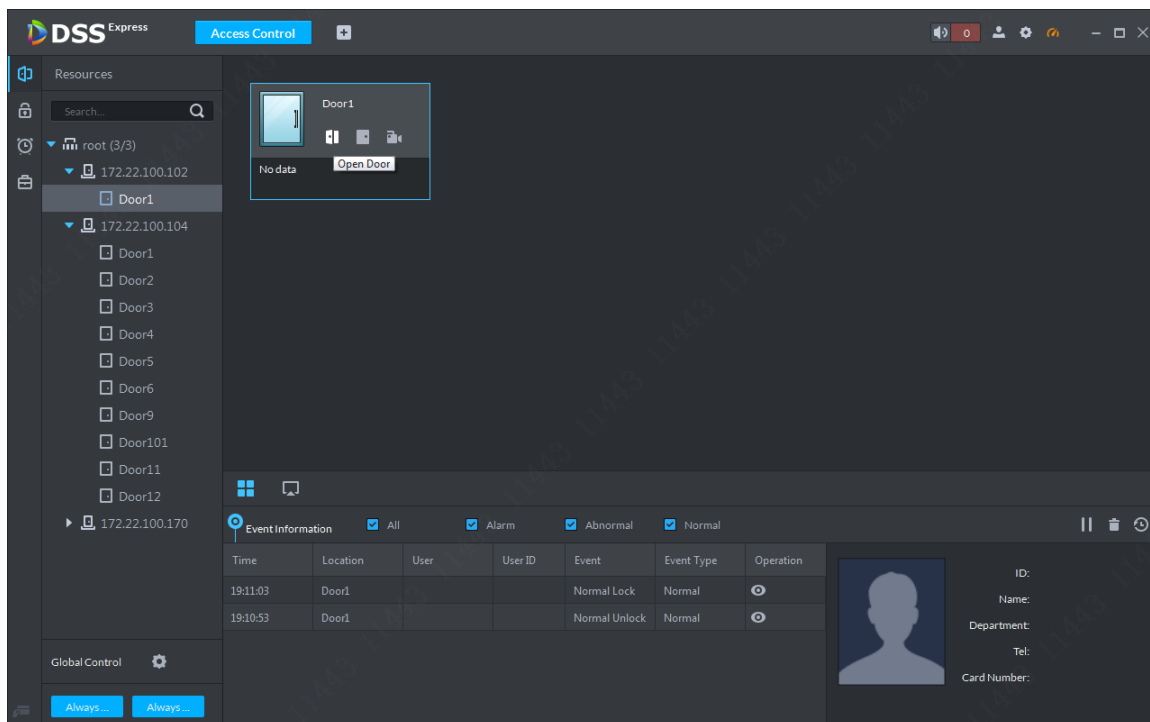


Figure 14-14

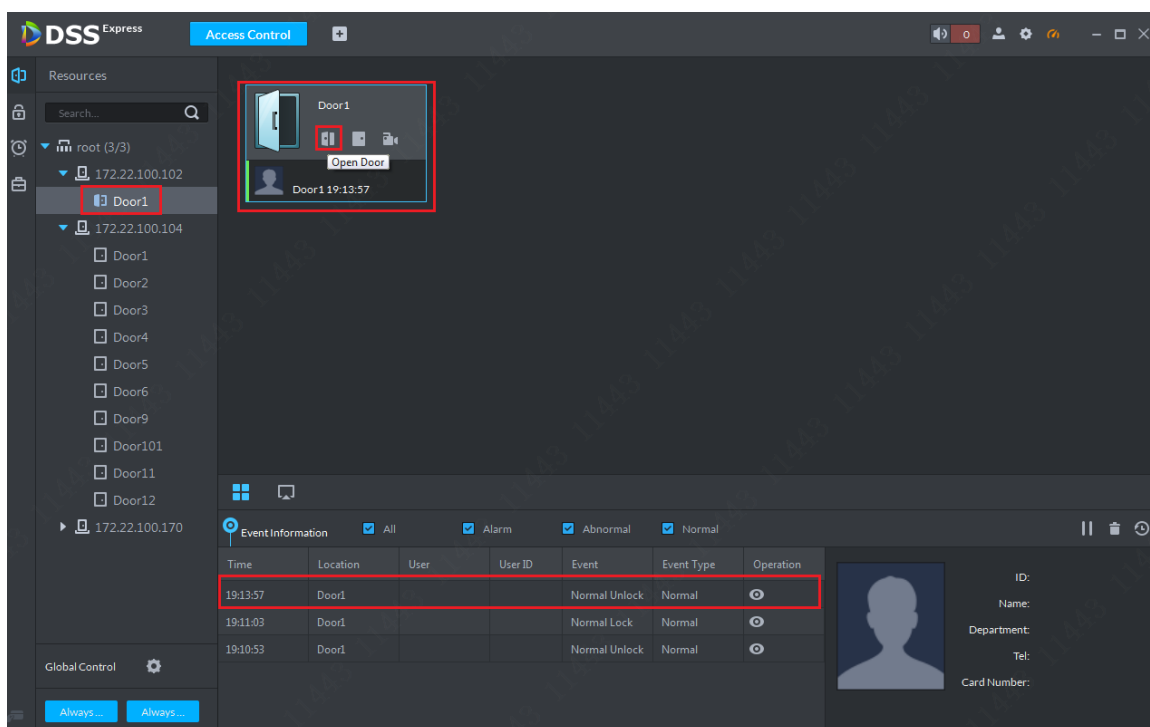


Figure 14-15

Step 2. Within certain time (can be set in door config, default is 5s, here uses 10s), door will auto lock and a record is created in event column. See Figure 14-16.

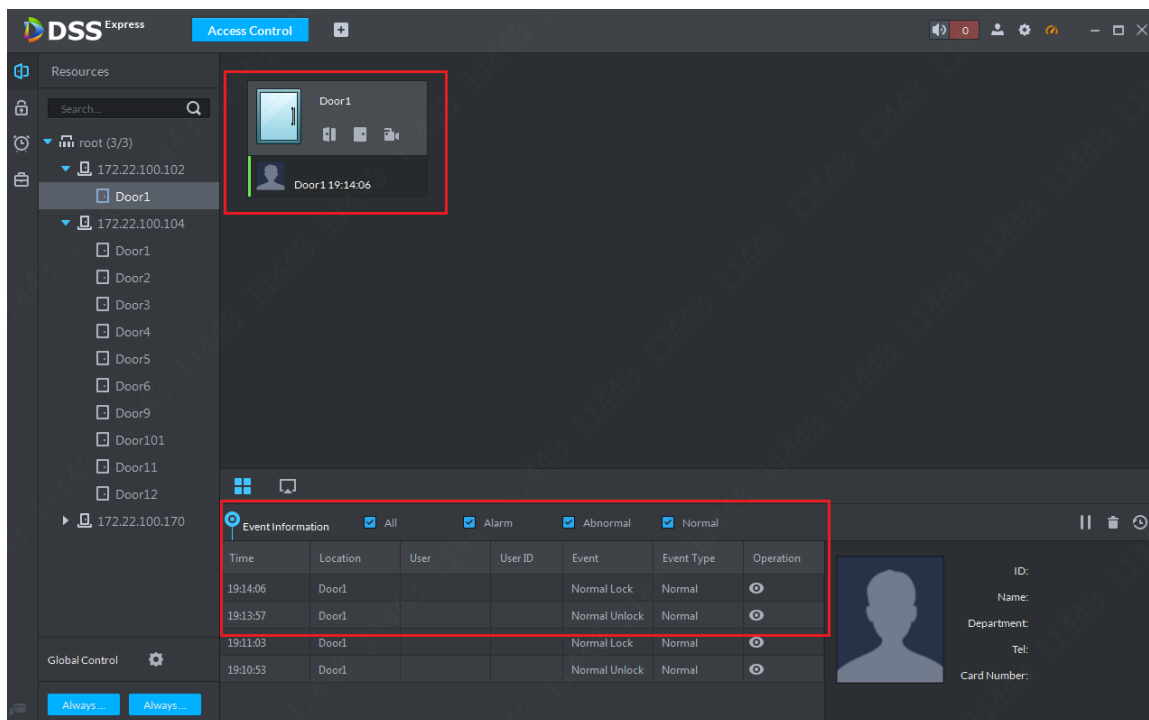



Figure 14-16

Step 3. Lock door. When a door is open, click unlock button  to unlock it. See Figure 14-17.

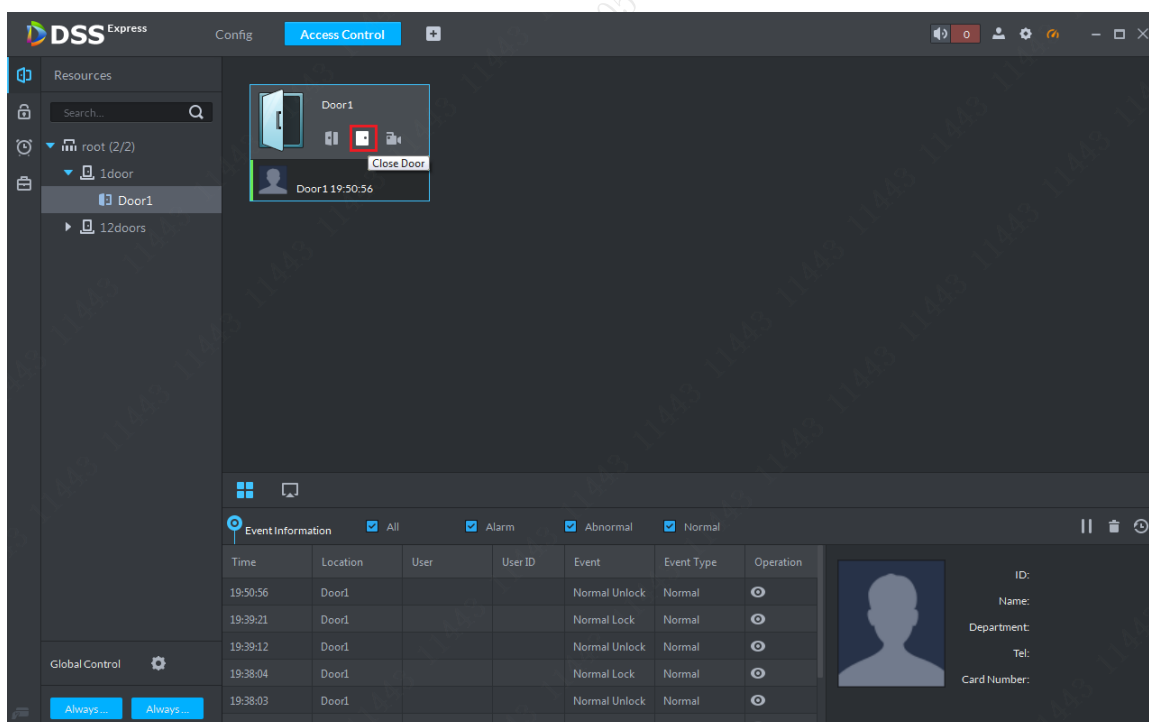


Figure 14-17

Step 4. Unlick effect and event record is in Figure 14-18.

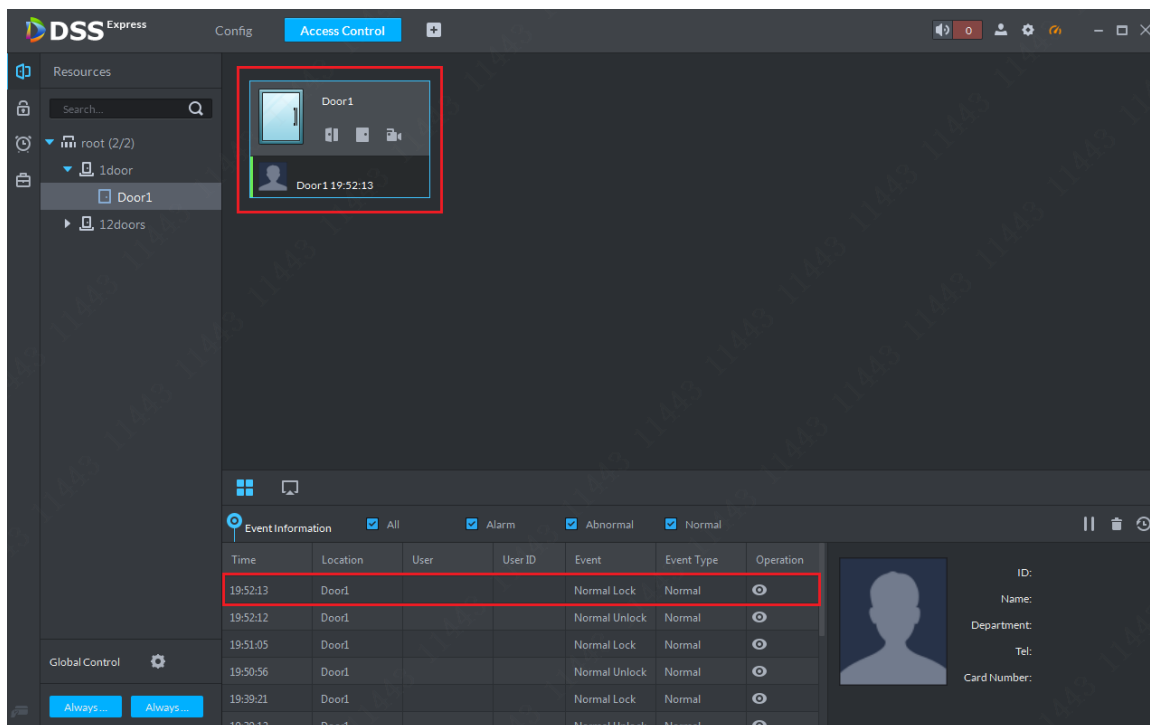


Figure 14-18

14.3.3 Event Details

Step 1. In event list, select one record and click to view details, include: event info, live video, snapshot, record. Live video must be bind video channel to door in door config first before you can view live here. You must link video in scheme example management first before you can snapshot and record here. Please refer to scheme management chapter.

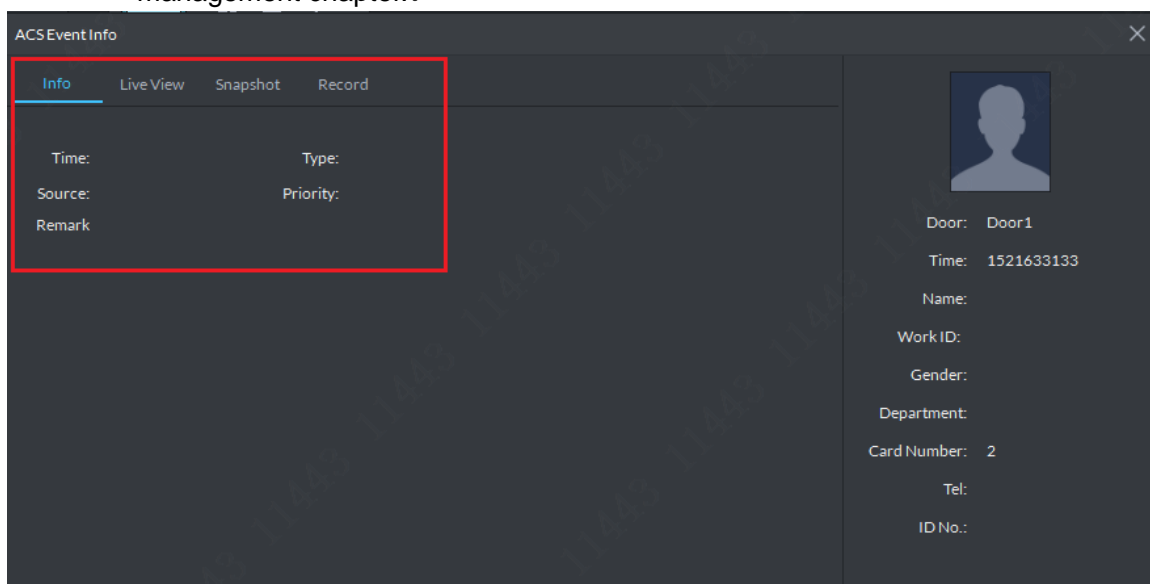


Figure 14-19

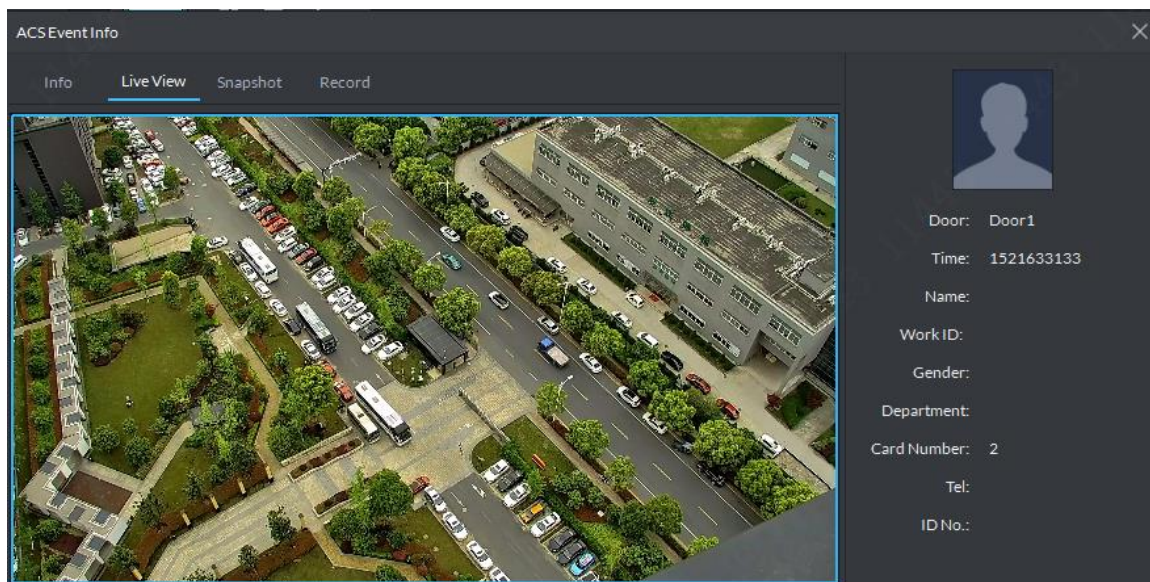


Figure 14-20

14.3.4 Global Control

Global control main function is to select one or more access control channel and NO/NC and restore to normal. Steps:

Step 1. In access control module console, on the left click config button to select channel, button is in Figure 14-21.

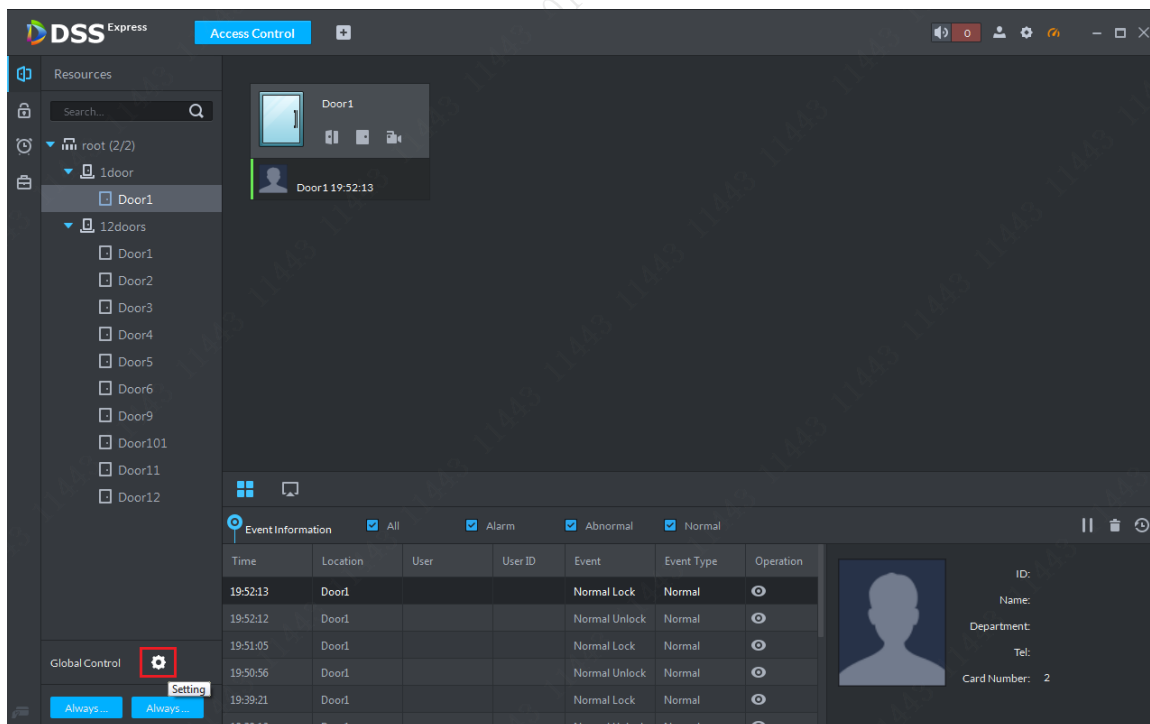


Figure 14-21

Step 2. In pop-up channel list, select channel for global control, see Figure 14-22 and click "OK" button to take effect.

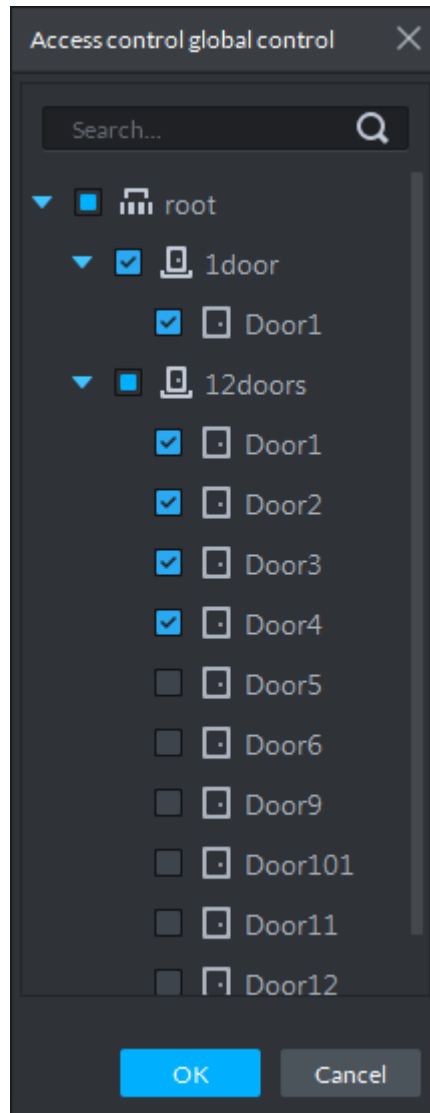


Figure 14-22

Step 3. Currently front door is closed, and you can click NO button to unlock it. This operation must be operated with password, so please enter password of current user in system box, and click "OK" button. (After global control unlock, the door will not close automatically after set time, instead please manually click replay or click button to close door.)

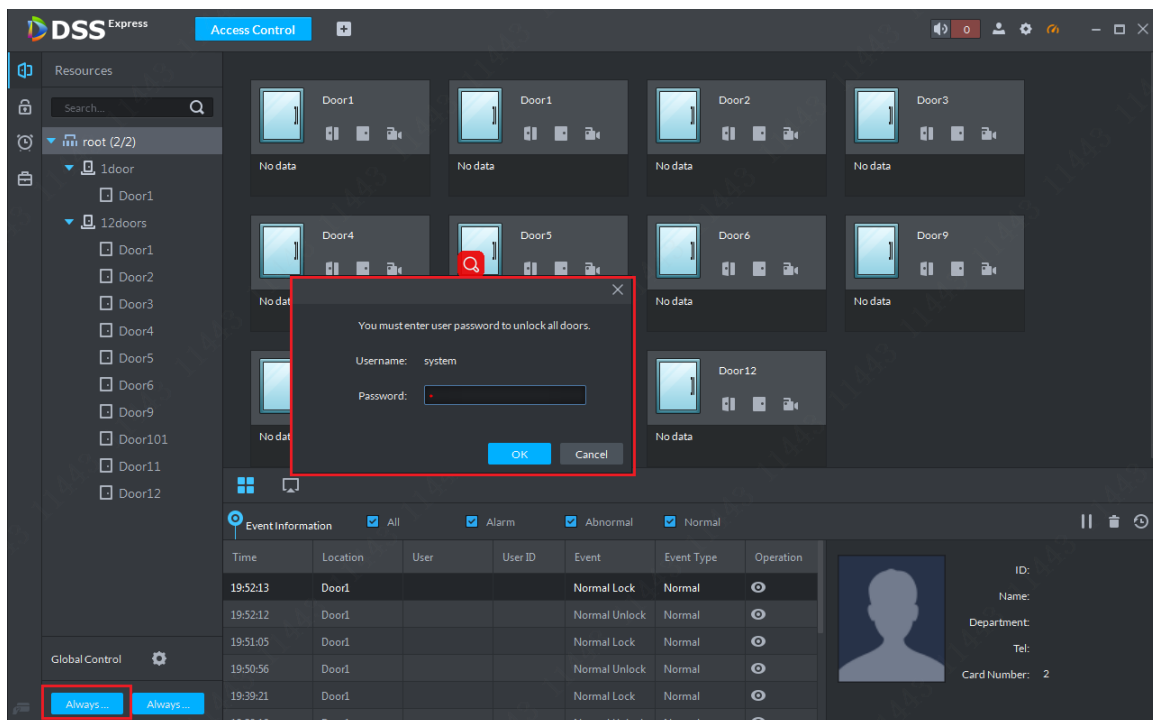


Figure 14-23

Step 4. On the right, in access control channel list, you can see selected door status become open status. See Figure 14-24.

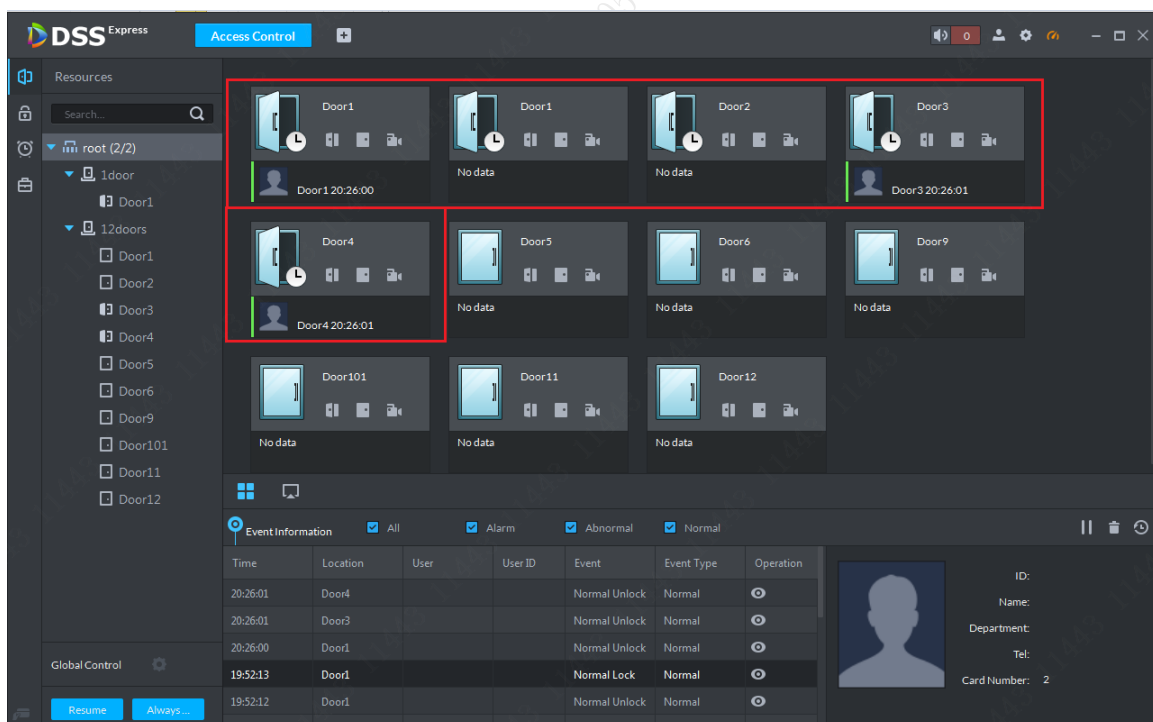


Figure 14-24

Step 5. Click NC button, and follow system instructions to enter current username password, click "OK" button to start. See Figure 14-25.

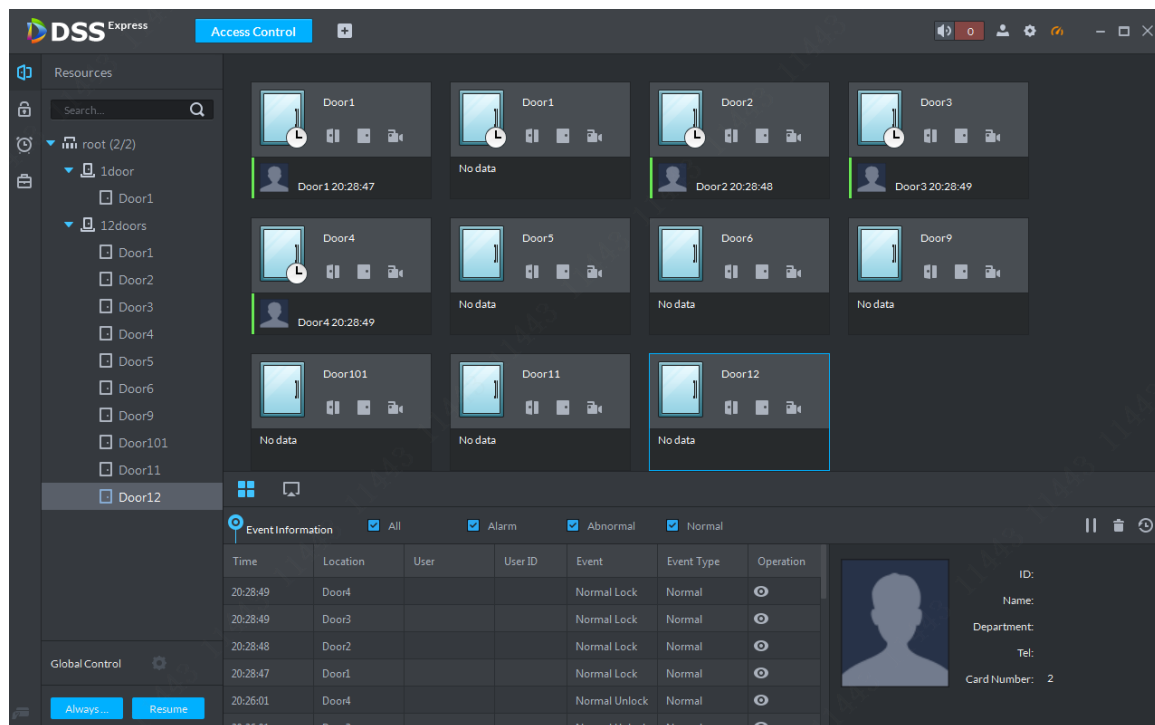


Figure 14-25

Step 6. Exit global control, please click to restore normal via button “Resume” [Resume](#).

14.3.5 Scheme Management

Scheme management function includes setup of access control channel’s alarm type and you can determine alarm priority, scheme work period, link PTZ preset, linked video open in preview window, linked snapshot and record, linked alarm output, alarm email sending, linked access control channel in NC/NC status and etc.

Warning:

Every alarm type in link config shall be separately set, since you cannot set them together as a batch.

Step 1. Enter access control module console, and on the left, select one access control channel and right click mouse, in pop-up menu, select Door Config to enter config page. See Figure 14-26.

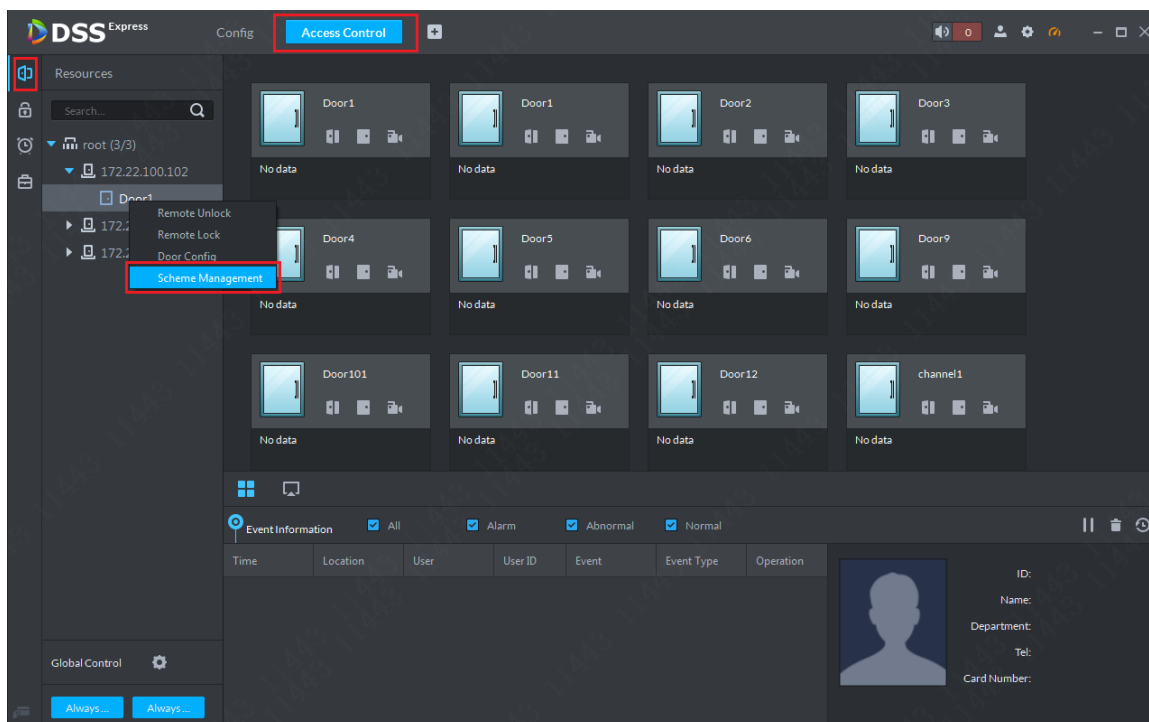



Figure 14-26

Step 2. Enter event config page, first please select alarm type, and then enable alarm , set alarm level, select alarm arm work time (select time template), see Figure 14-27. After you execute, you also can select other alarm type and follow the same steps to set. Each alarm type can be set to different levels and arm time.

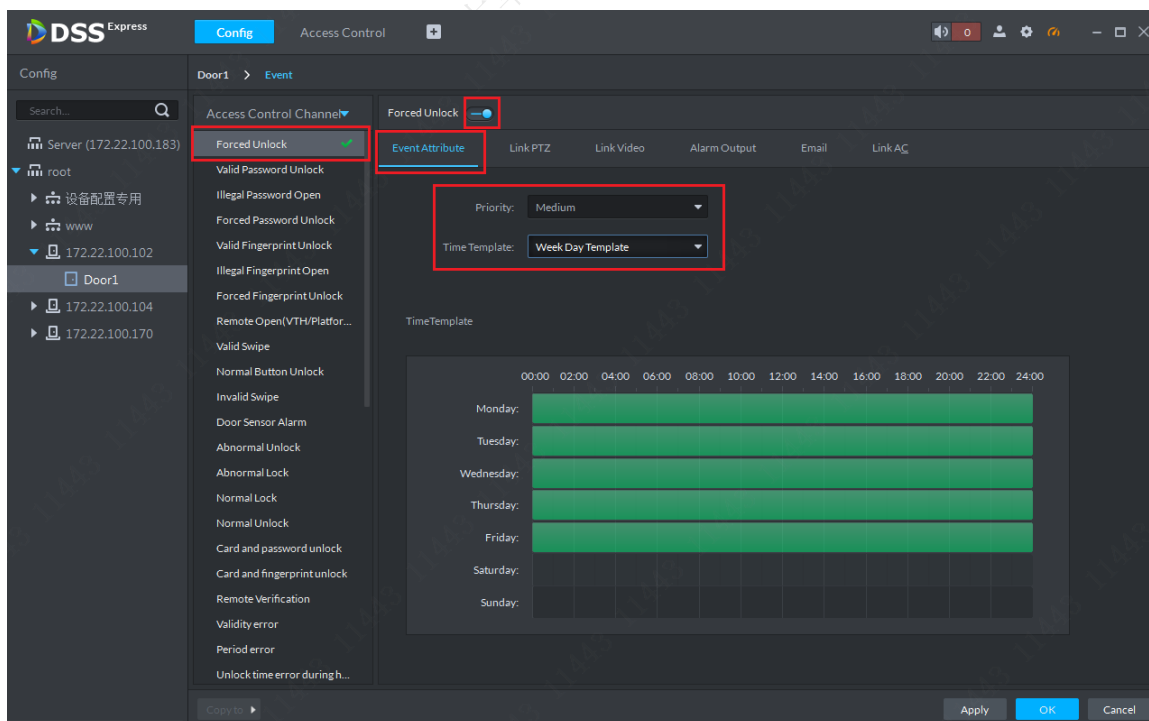


Figure 14-27

Step 3. Link PTZ preset config. When event property config is complete, please go to event config page, and select Link PTZ tab. See Figure 14-28. Select one speed dome channel, and then select the preset which speed domes rotated to when event

occurred. If preset list is null, you can skip this step and click edit scheme to set PTZ link.

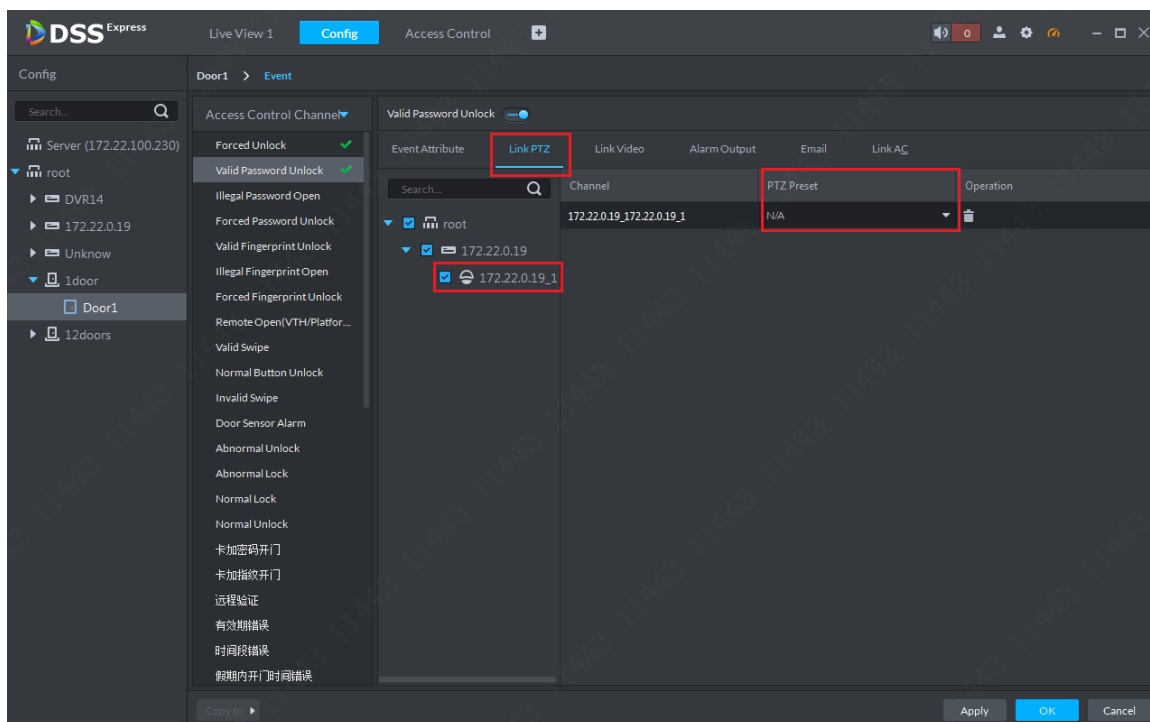


Figure 14-28

Step 4. Link video-category setup, please select Link Video tab, see Figure 14-29. You can drag video channel into preview window to preview video. You can select if to save record when event occurs and stream type, time to save plus whether to enable snapshot, open video in preview window and etc. Please set accordingly.

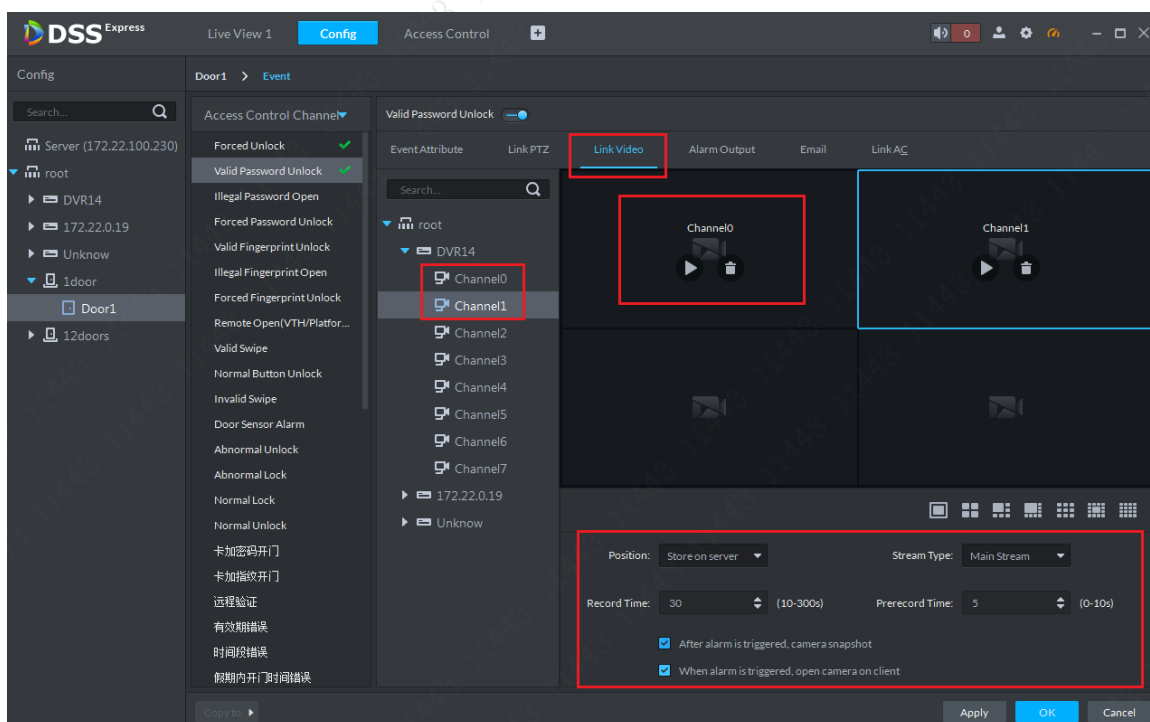


Figure 14-29

Step 5. Link alarm output channel, if alarm output channel connects to buzzer alarm or other alarm devices, you shall let the system auto enable alarm at occurrence, and set alarm length, see Figure 14-30.

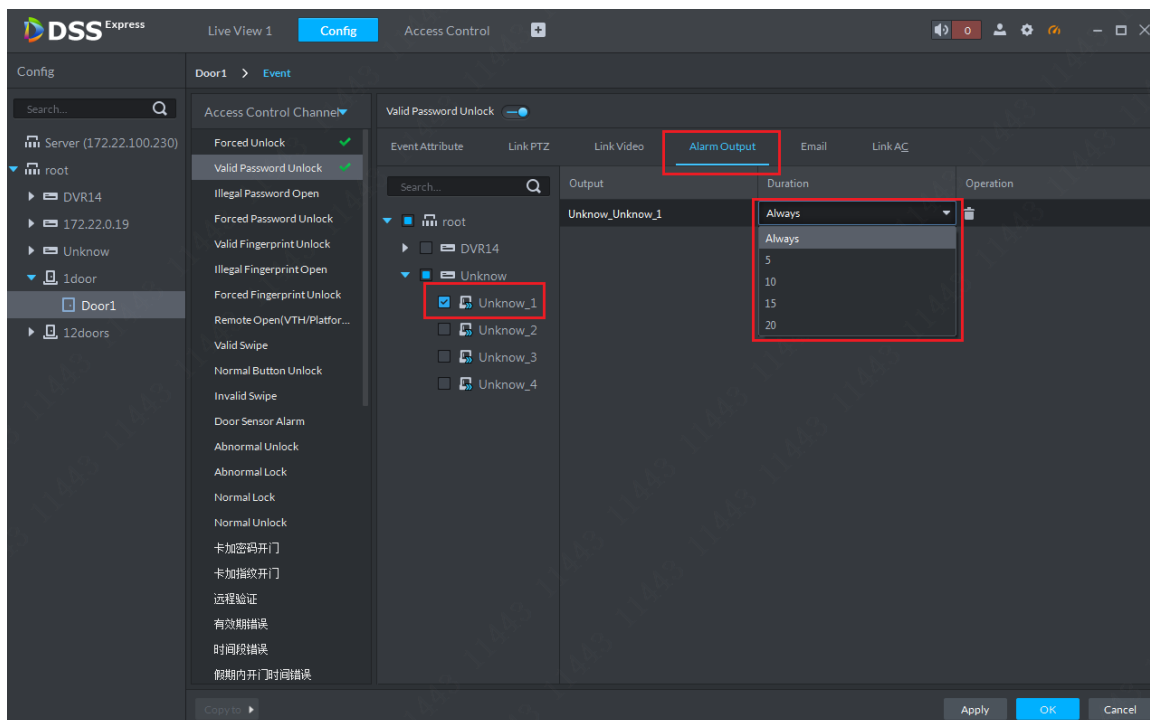


Figure 14-30

Step 6. Link email config, If when an event occurs, users shall be notified via email, you can link email config and select receiver in address or manually enter. Email title shall be filled in according to actual event, content must contain event time, event type, event source. Please select items you contain in email (all of the three items are recommended), and you also can edit email, see Figure 14-31.

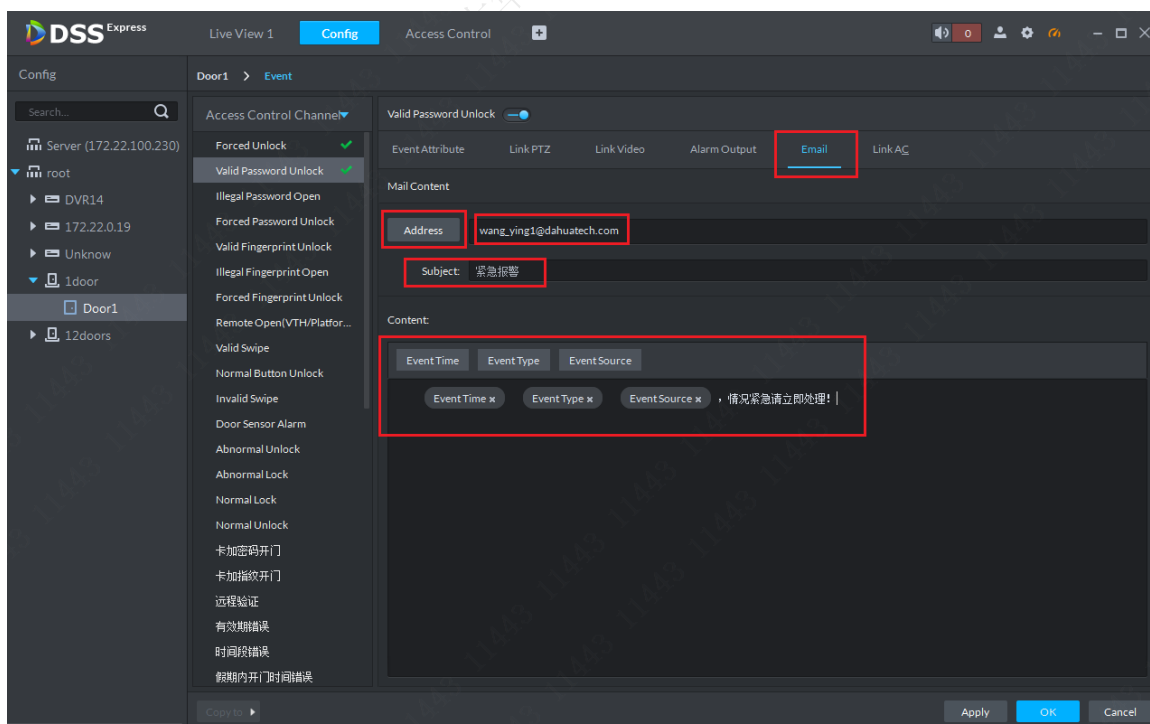


Figure 14-31

Step 7. Link access control channel config. When an event occurs, you can set to auto unlock or lock certain door in Link AC. You can select access control channel and set status of this channel. Each channel setup is independent, and after setup is

complete, click “OK”. See Figure 14-32.

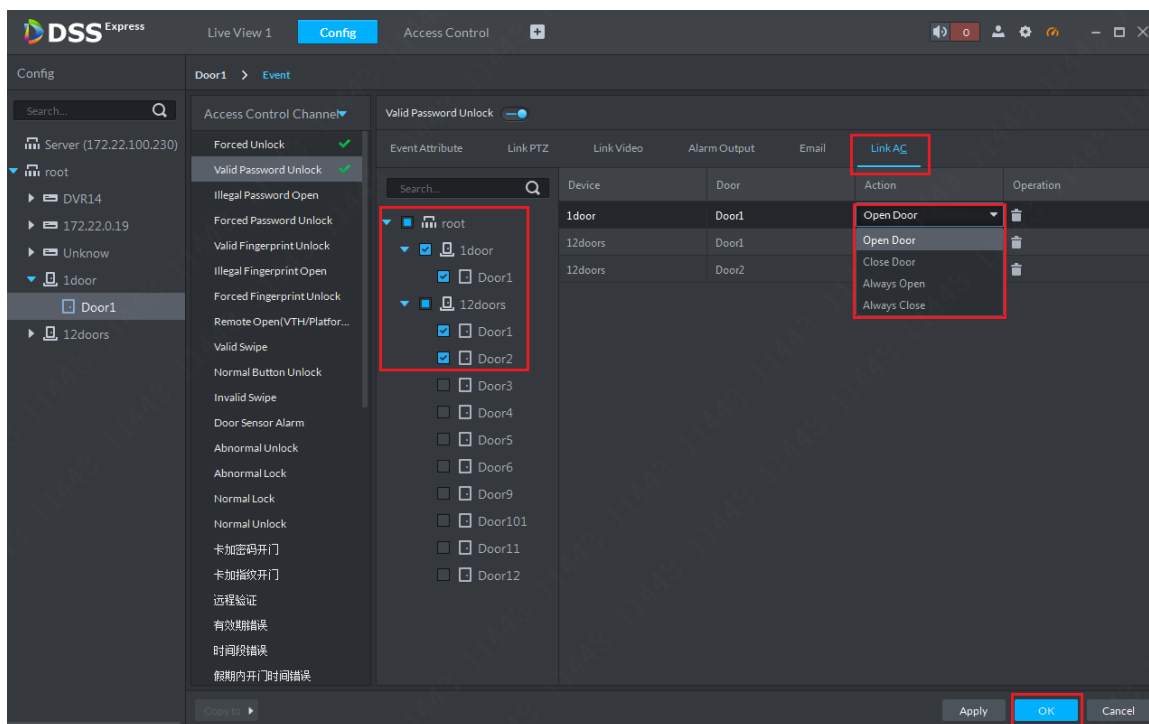


Figure 14-32

Step 8. Scheme is shown in Figure 14-33.

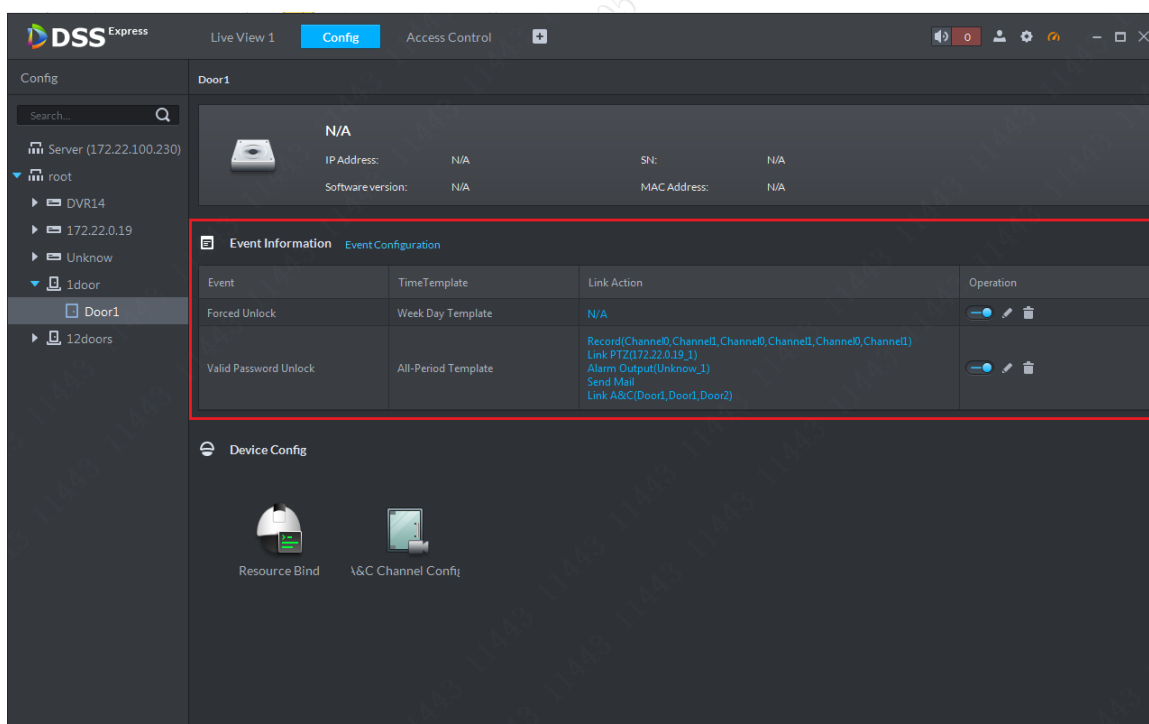


Figure 14-33

14.4 Door Group

Door group and door rule are non-standard config, and user can select to set or not.

Step 1. In Client homepage, click “Access Control” to enter access control module, see

Figure 14-34.

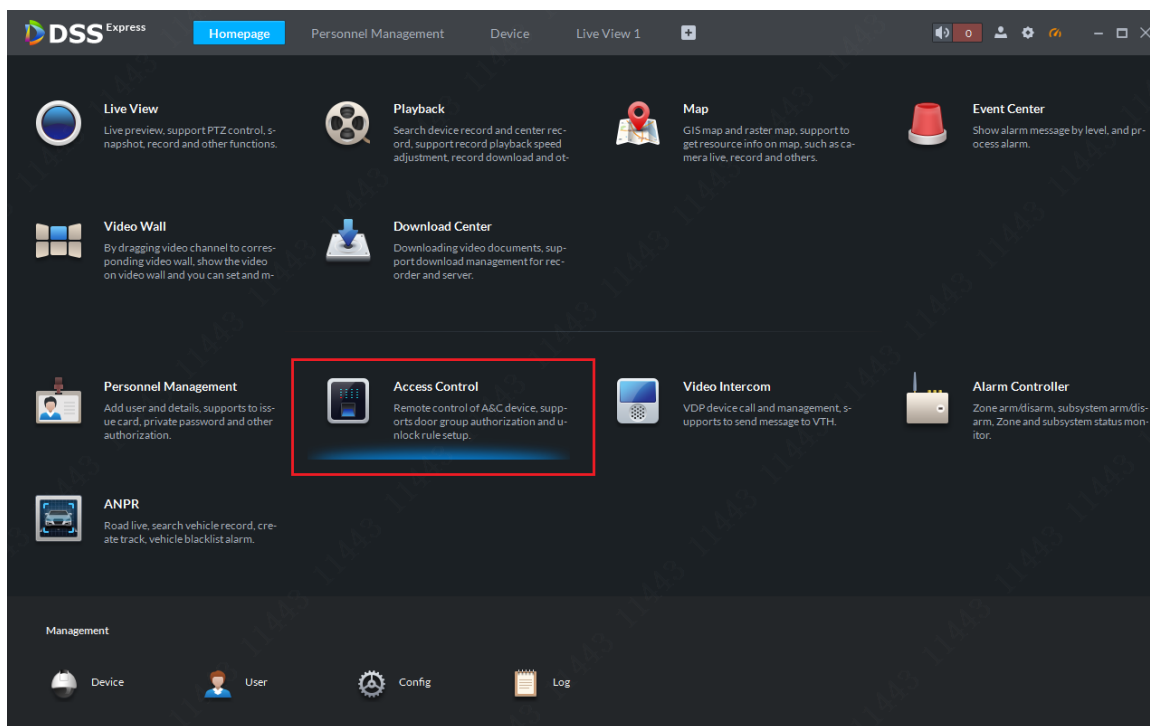


Figure 14-34

Step 2. Click “Access Control” tab to enter door group&rule setting page, in Door Group page click “Add” button, see Figure 14-35.

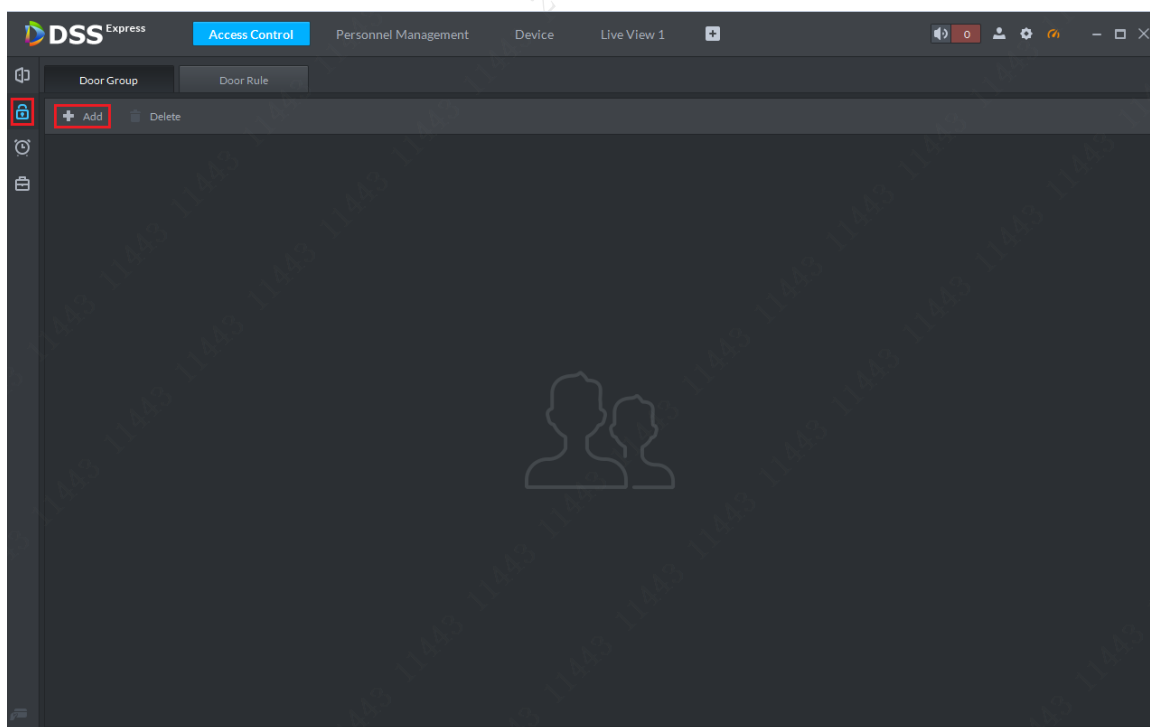


Figure 14-35

Step 3. Door group setting page is shown. Please follow instructions to fill in door group name, select time template (not required), select channel, click “OK” button to save.

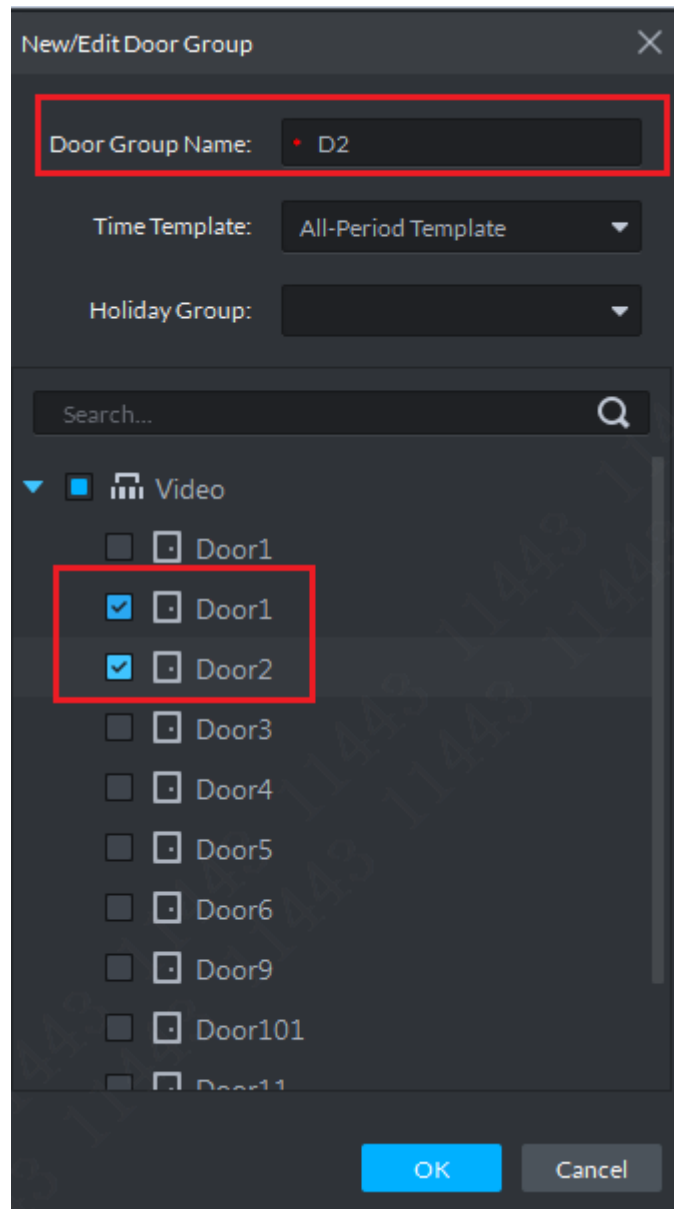


Figure 14-36

Step 4. Door group is added and user can edit and delete if need.

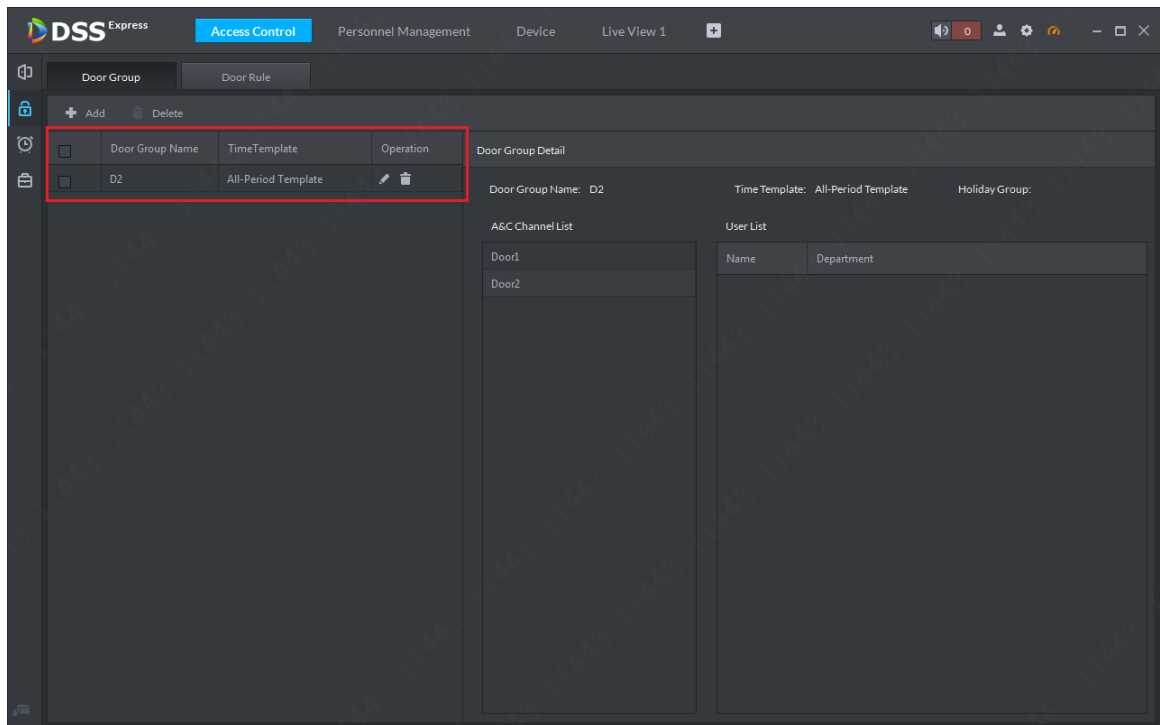



Figure 14-37

14.5 Advanced Function

14.5.1 First Card Unlock

First card unlock node: after you set first card unlock only this first user swipe card, then other users may swipe card to unlock door. You may set more than one first card, as long as one first user swipes card, others can swipe card. Steps:

- Step 1. Enter access control control module, and select advanced function tab, in "First Card Unlock" tab, click Add button  Add to add first card unlock scheme, see Figure 14-38.

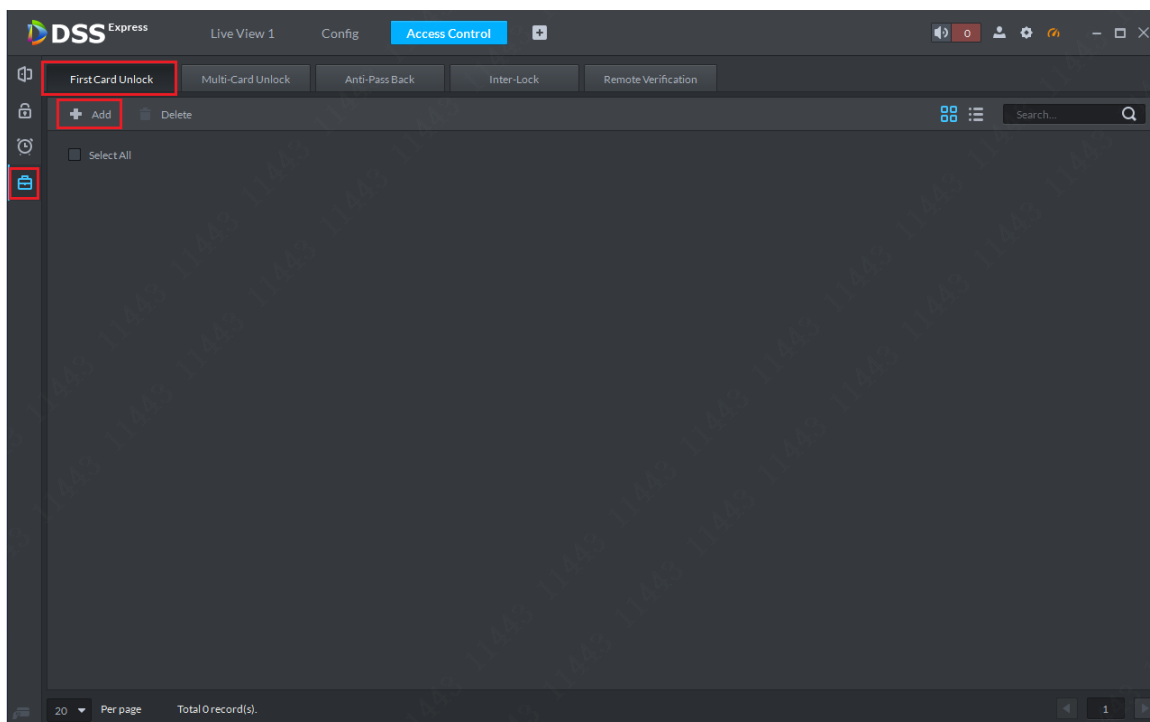


Figure 14-38

Step 2. Select access control channel (select one only) , time, door status, user with first card unlock (support multiple choice) in add page, set and click “OK”to add. Scheme takes effect.

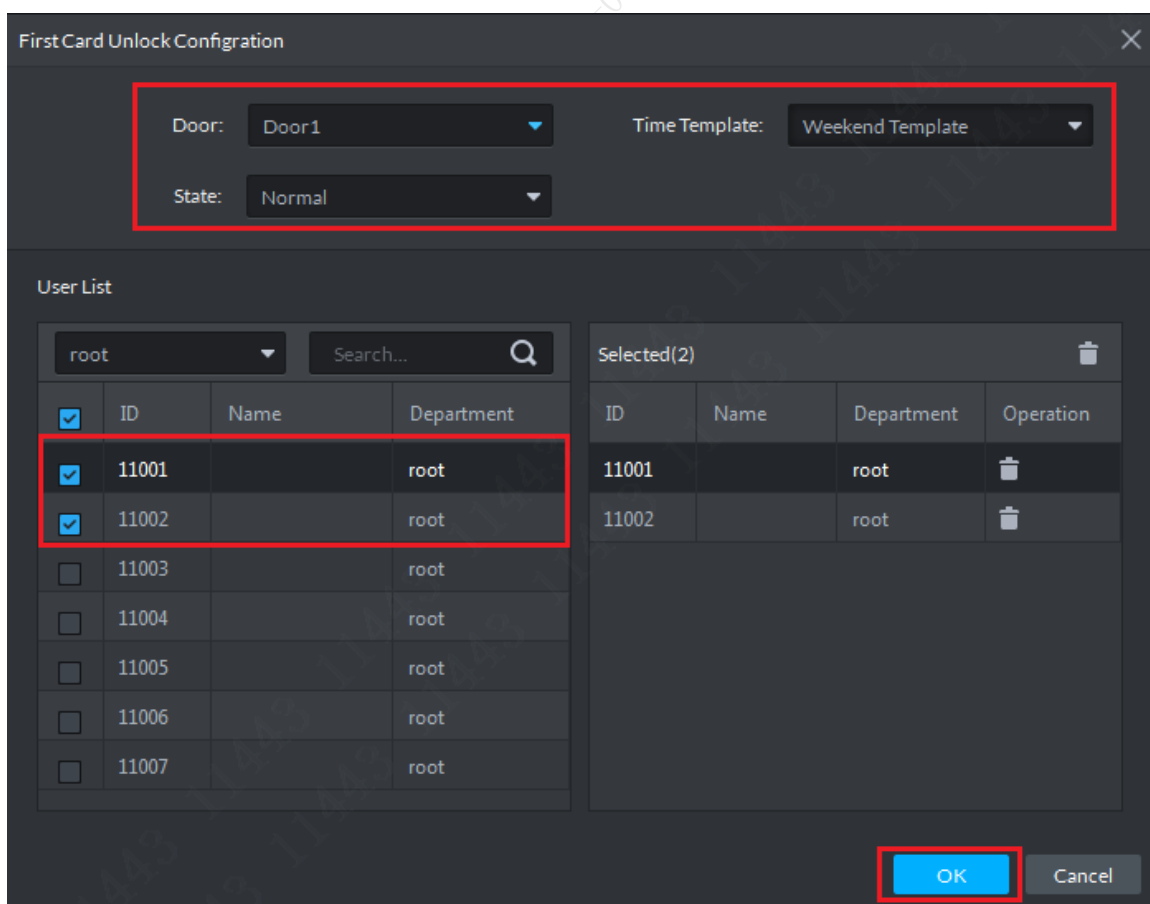


Figure 14-39

Step 3. First card unlock scheme list is shown below, in this page the user can select to enable/disable this scheme, or edit and delete scheme.

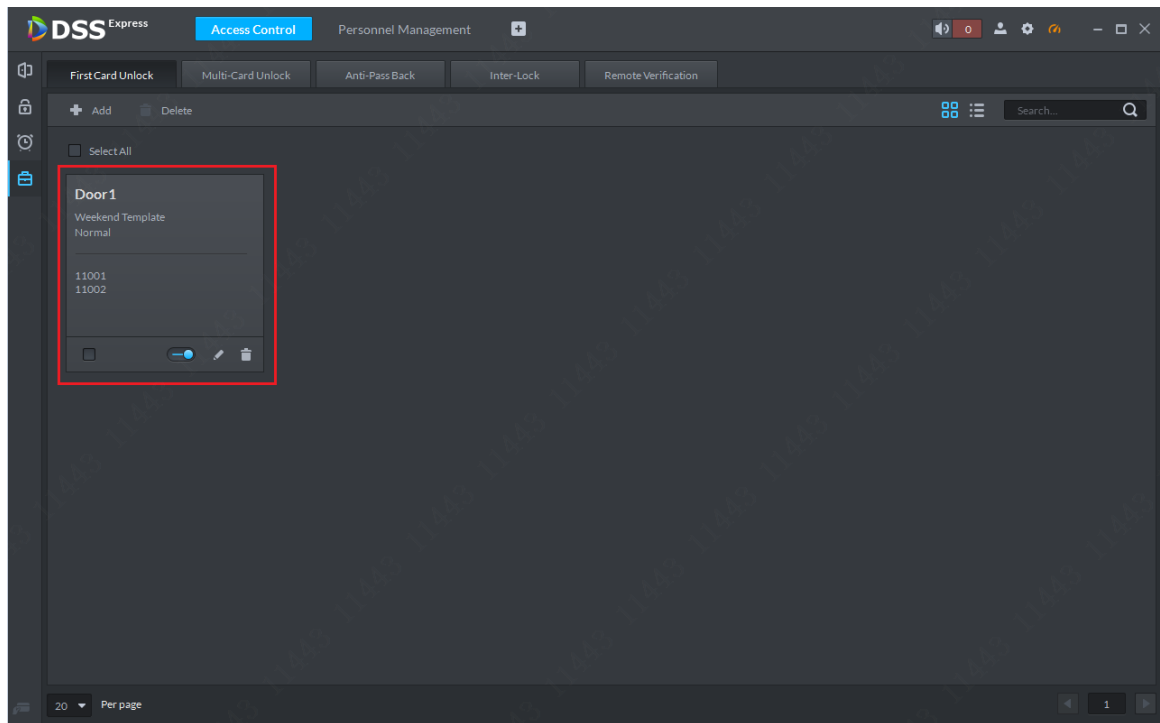


Figure 14-40

14.5.2 Multiple Card Unlock

Multiple card unlock note: for a certain access control channel, more than one group of user shall swipe card in set sequence in order to unlock it and you can set valid number of user of each group as changing valid unlock user number in the group. Max of 4 groups and accumulated valid user cannot exceed 5. Steps:

- Step 1. Enter access control module and select advance function tab, click “Multi-Card Unlock” tag to enter multiple card setup page. When first time set, please add user group first. In this page, click “Add user group” button [Add user group](#) to add user group.

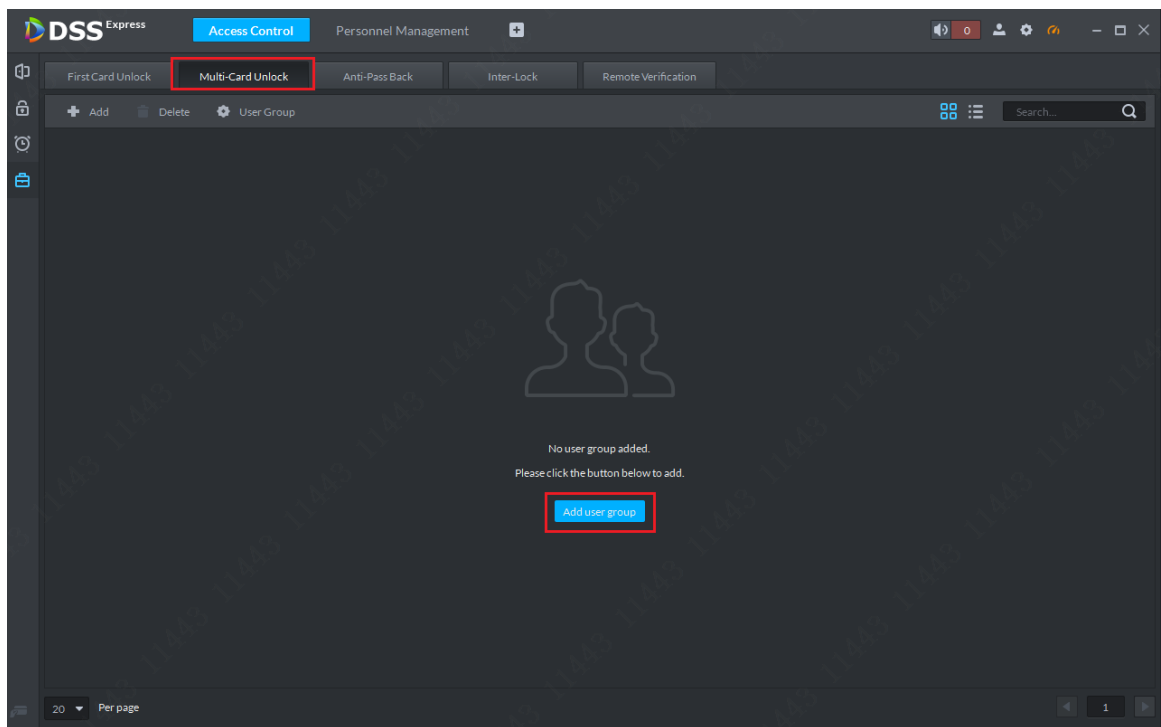


Figure 14-41

Step 2. In the system, click “Add”button to add.

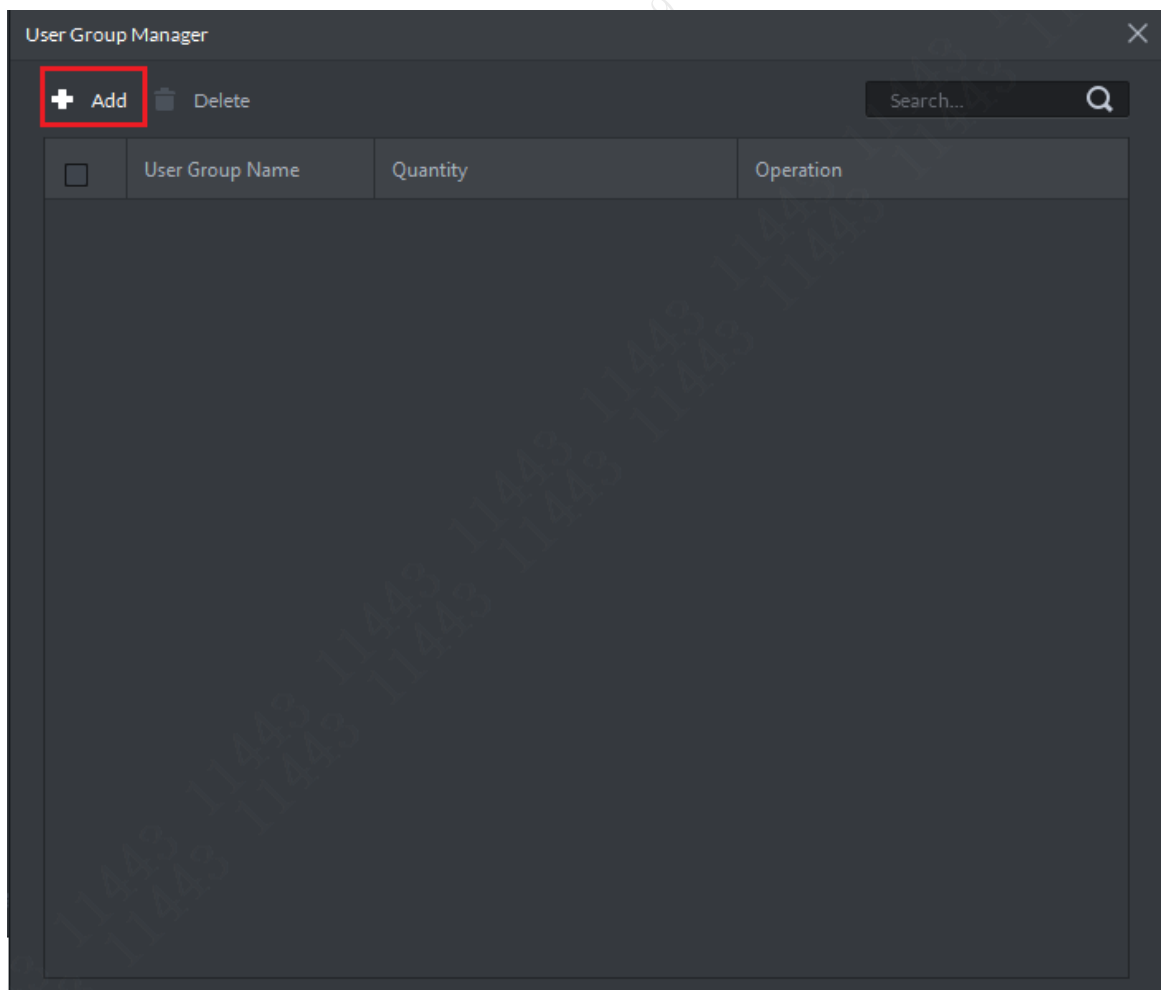


Figure 14-42

Step 3. In shown page, set group name, and check group member in corresponding

organization. Click “OK”button to add. This step only selects member, without concerning sequence.

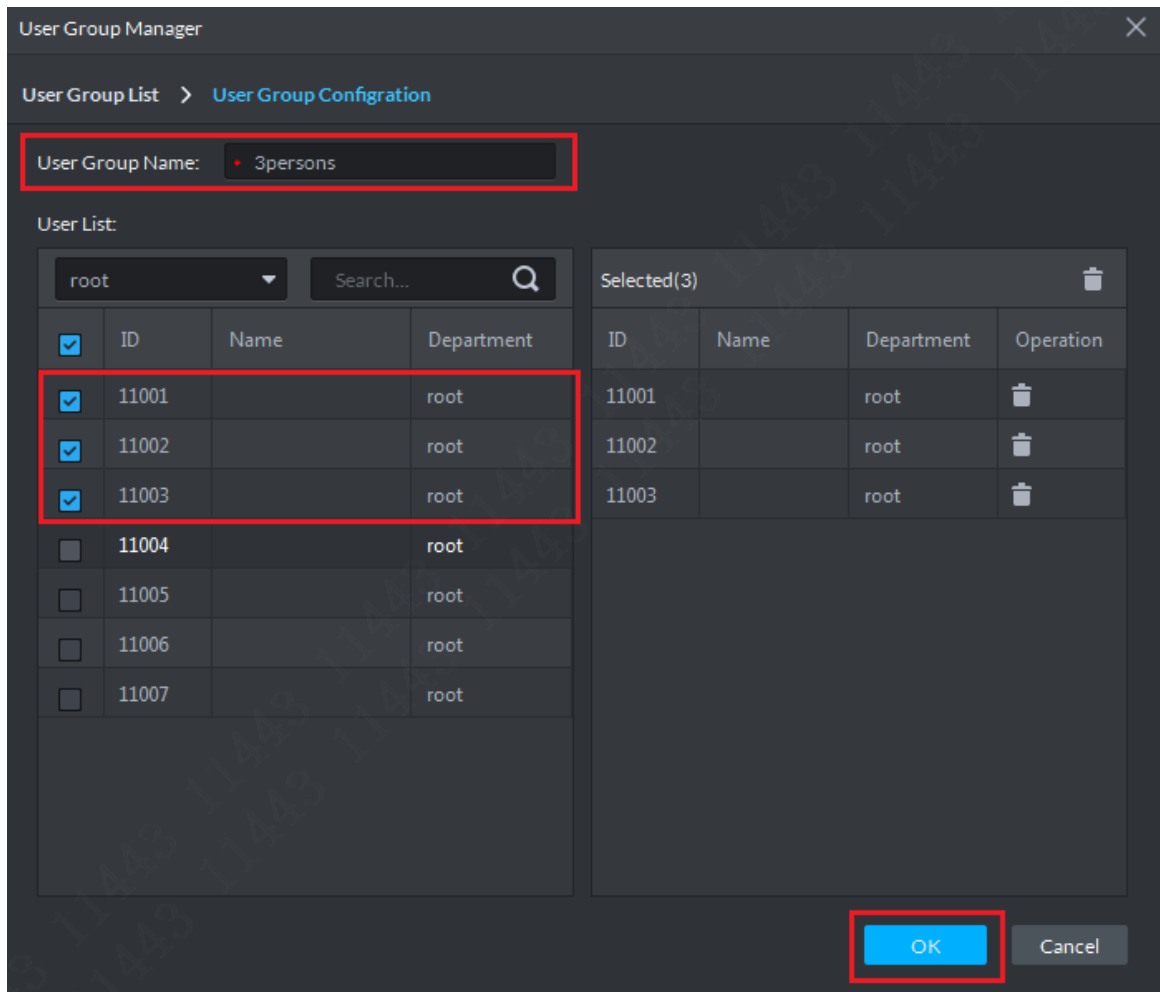


Figure 14-43

Step 4. User list is shown below, if you want to add, click “Add”button. If you do not continue to add, click close button at the upper right.

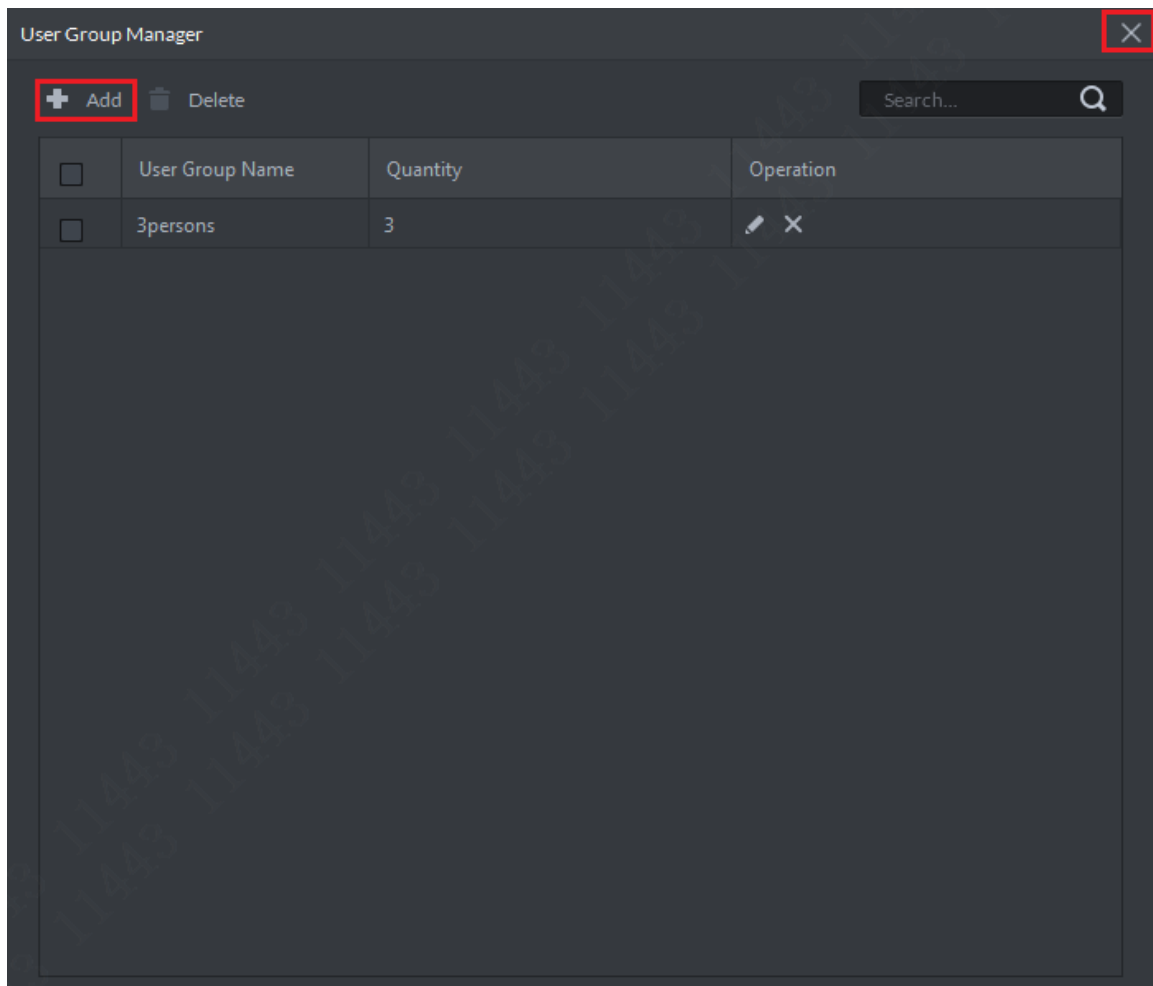


Figure 14-44

Step 5. Click “Add”button to continue to add 3 groups, and you can see Figure 14-45 when complete.

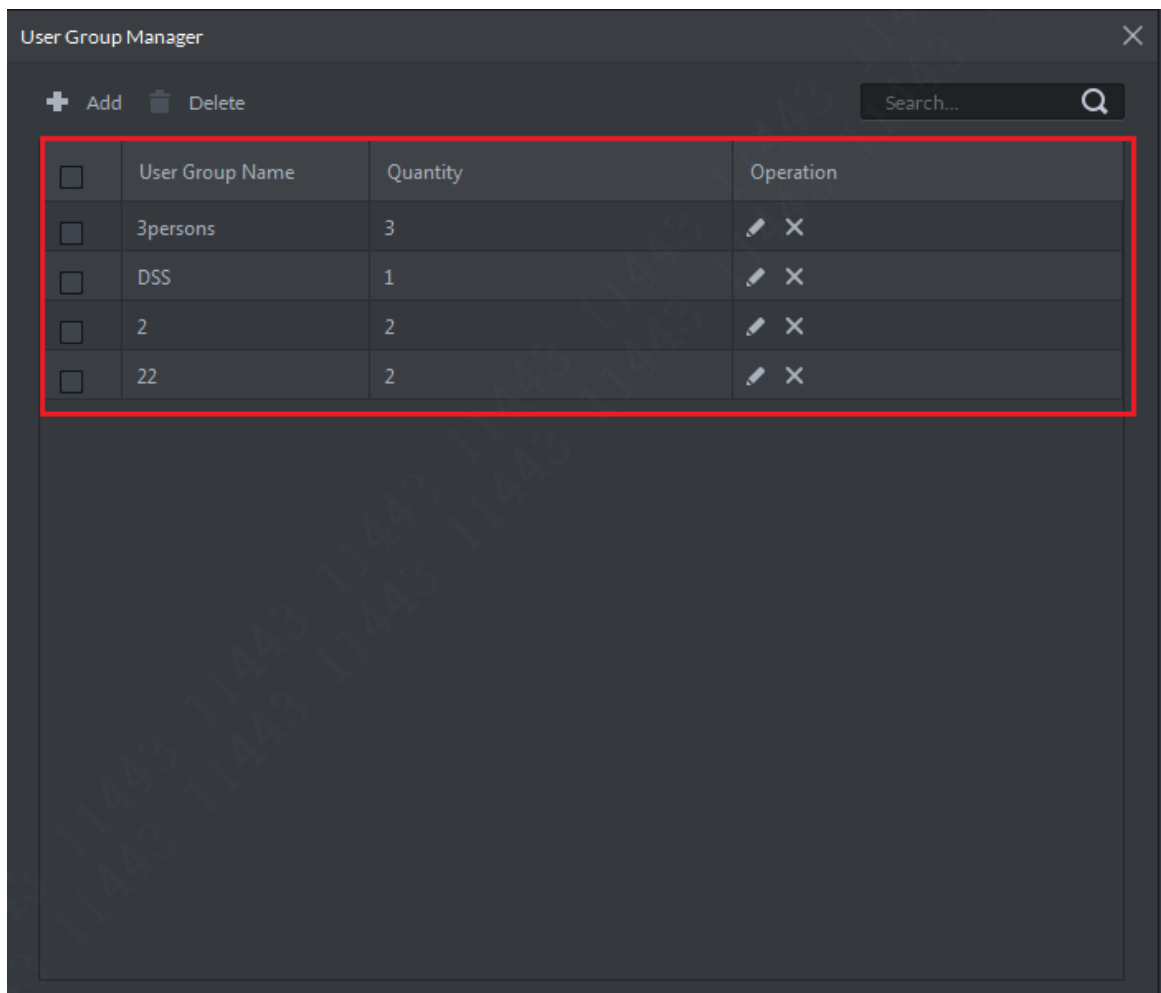


Figure 14-45

Step 6. Click user group adding, and return to multiple card setup page. Click "Add" to add multiple card unlock scheme. See Figure 14-46. Please select access control channel in list.

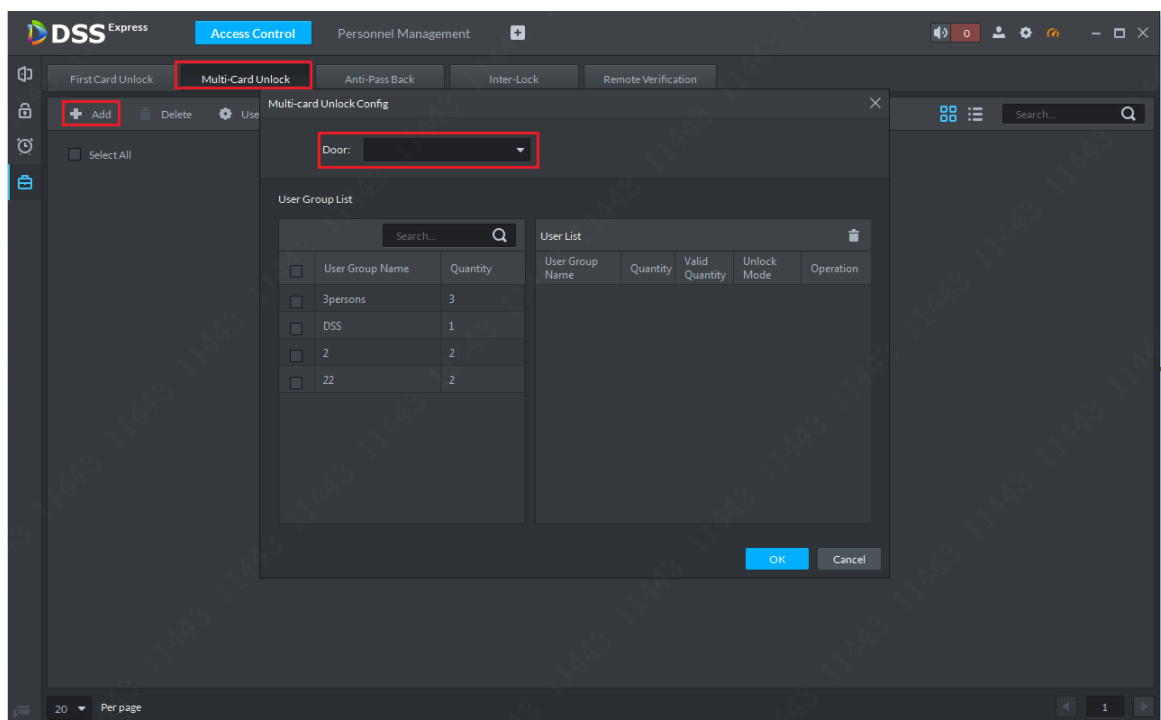


Figure 14-46

Step 7. Access control channel is selected and then select user group. Adjust group sequence, valid user in each group, unlock method (card, password, fingerprint) and etc. After setup is complete, click “OK”button to complete. See Figure 14-47.

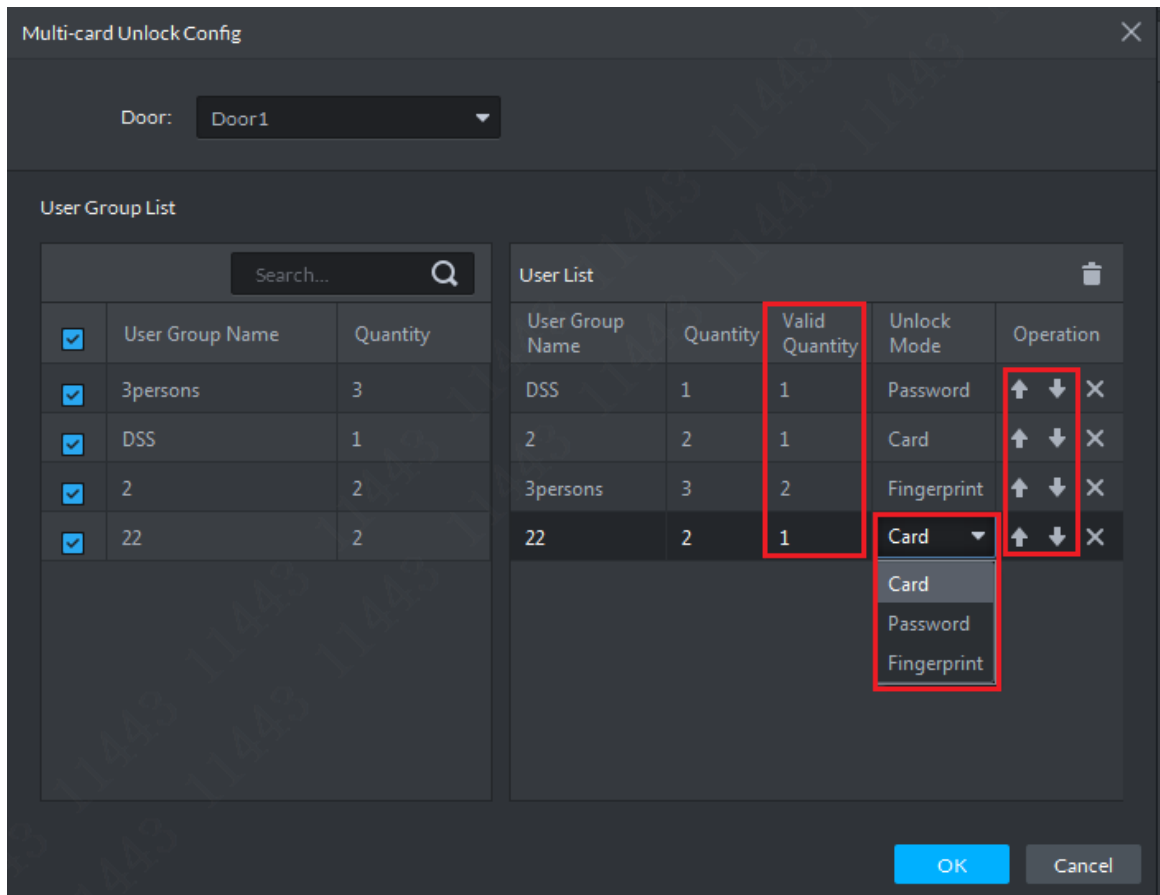



Figure 14-47

14.5.3 Anti-passback

Anti-pass back note: Set single/multiple user unlock path, so these users can only unlock is this sequence.

If you have set 1 2 3 anti-pass back, and then swipe 1 and then swipe 3 , it will trigger anti-pass back alarm (after general access control alarm, you can still unlock in set sequence), then swipe 1 2 3 will not successfully unlock, instead you must wait until reset time ends before you can swipe card to unlock again.

Steps:

Step 1. After you enter access control module, select advanced function tab, in “Anti-Pass Back”tag, click Add button  Add to add anti-pass back scheme, see Figure 14-48.

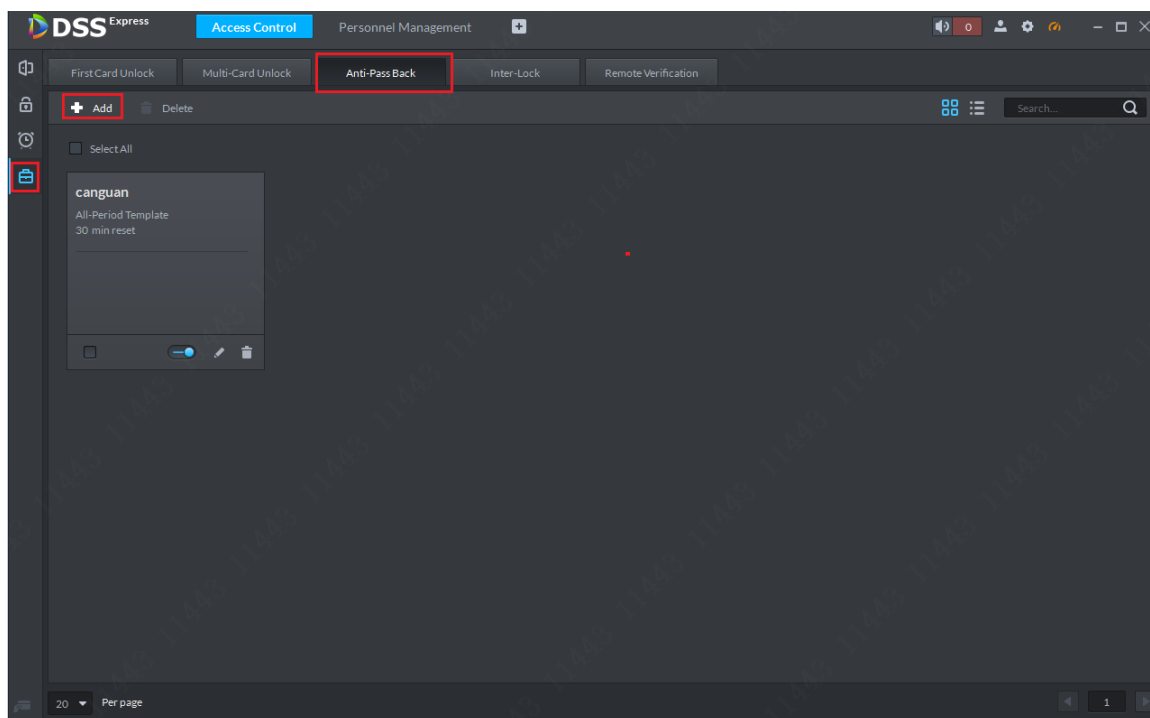


Figure 14-48

Step 2. In Add page, select access controller, set scheme name, and follow instructions and your need, set door group quantity and reader in each group. See Figure 14-49. After setup is complete, click “Next” button to enter user selection page.

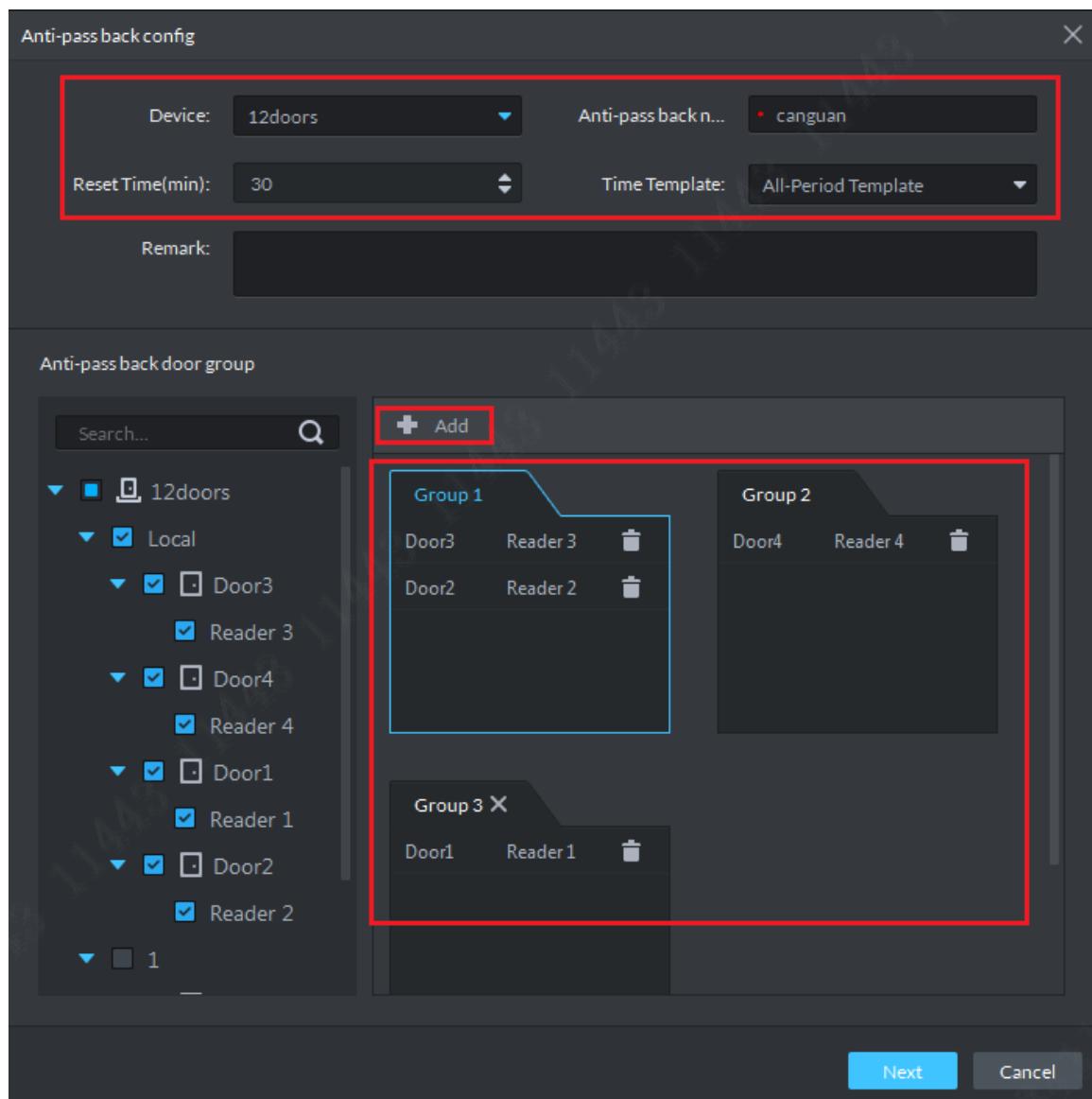


Figure 14-49

Step 3. In user selection page, please select use of this setup (multiple users are OK), and then click "OK" button to complete.

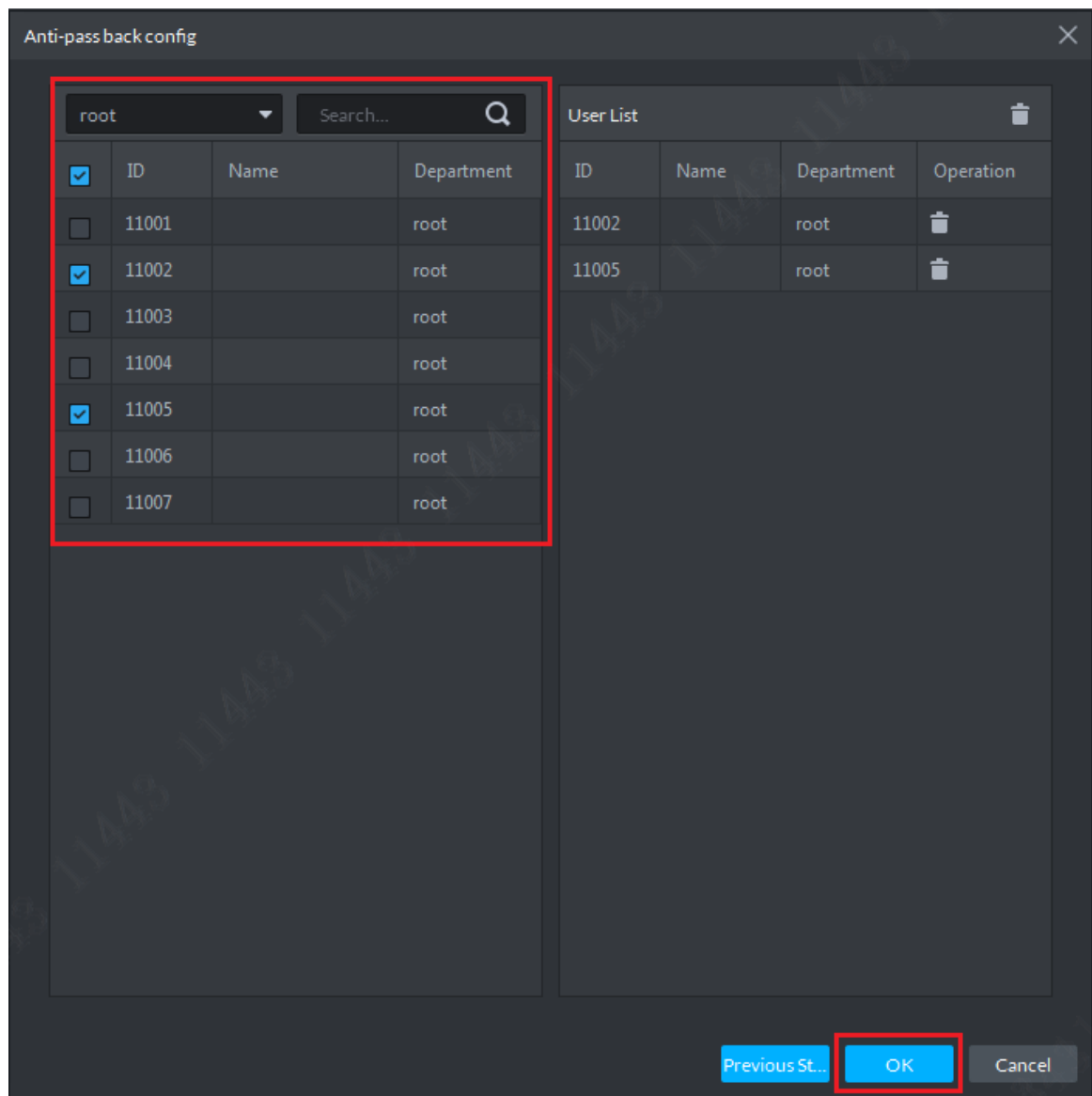


Figure 14-50

Step 4. After adding is complete, see list in Figure 14-51.

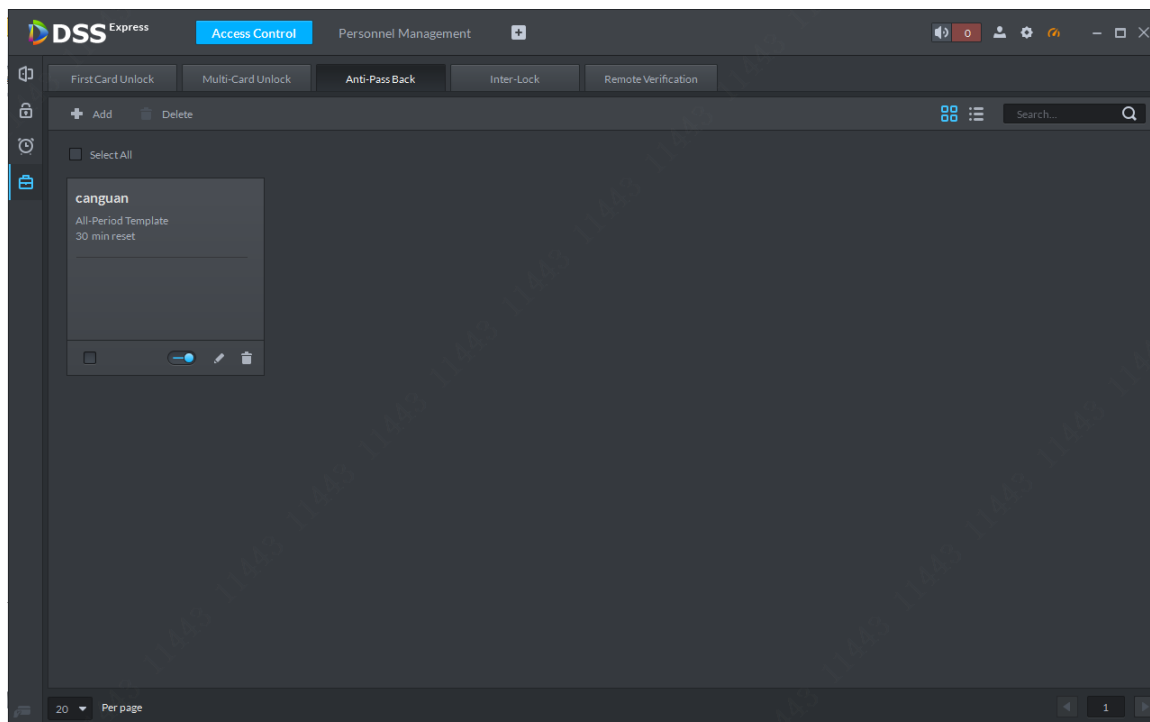


Figure 14-51

14.5.4 Inter-lock

Inter-lock function node: General access control is in-group inter-lock, and centralized controller is group-group inter-lock. General access control: In inter-lock group, as long as one door is open, you cannot open other doors. Centralized access control: channels in the same group are not related, so you can open them as you wish, however, as long as one channel in a group is open, you cannot open channel in other groups.

The following takes centralized controller as an example:

- Step 1. After you enter access control module, select advanced function tab, in "Inter-Lock" tab, click New button **+ Add** to add inter-lock plan. First please select access control device in Device list. See Figure 14-52.

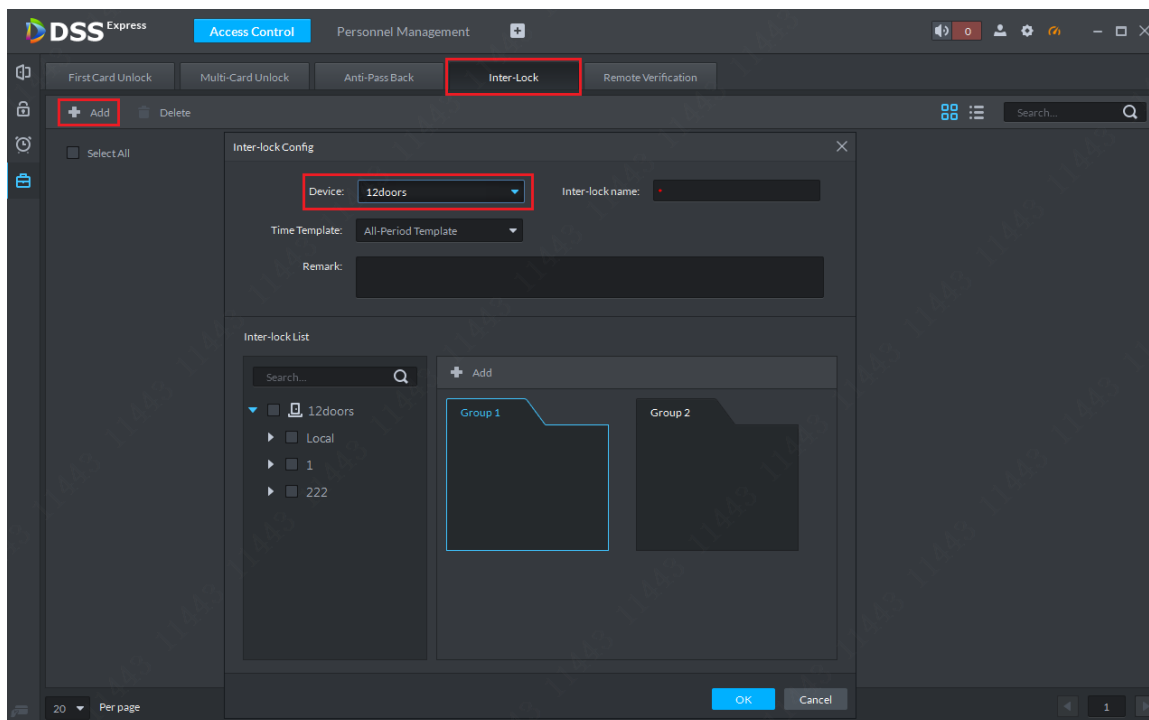


Figure 14-52

Step 2. In Add page, set inter-lock name, select period of plan, and add access control in each door group. If the default two groups do not meet you need, you can click “Add” button to add more groups. See Figure 14-53. Click “OK” to complete.

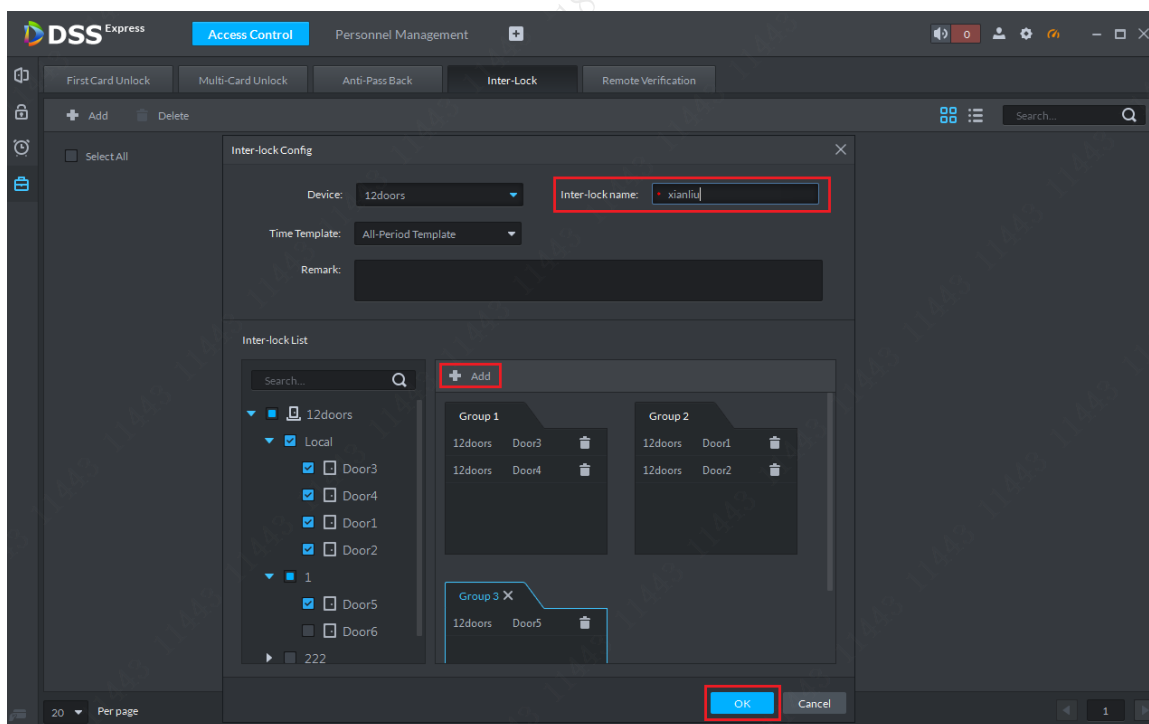


Figure 14-53

Step 3. Successfully added plan is shown in Figure 14-54.

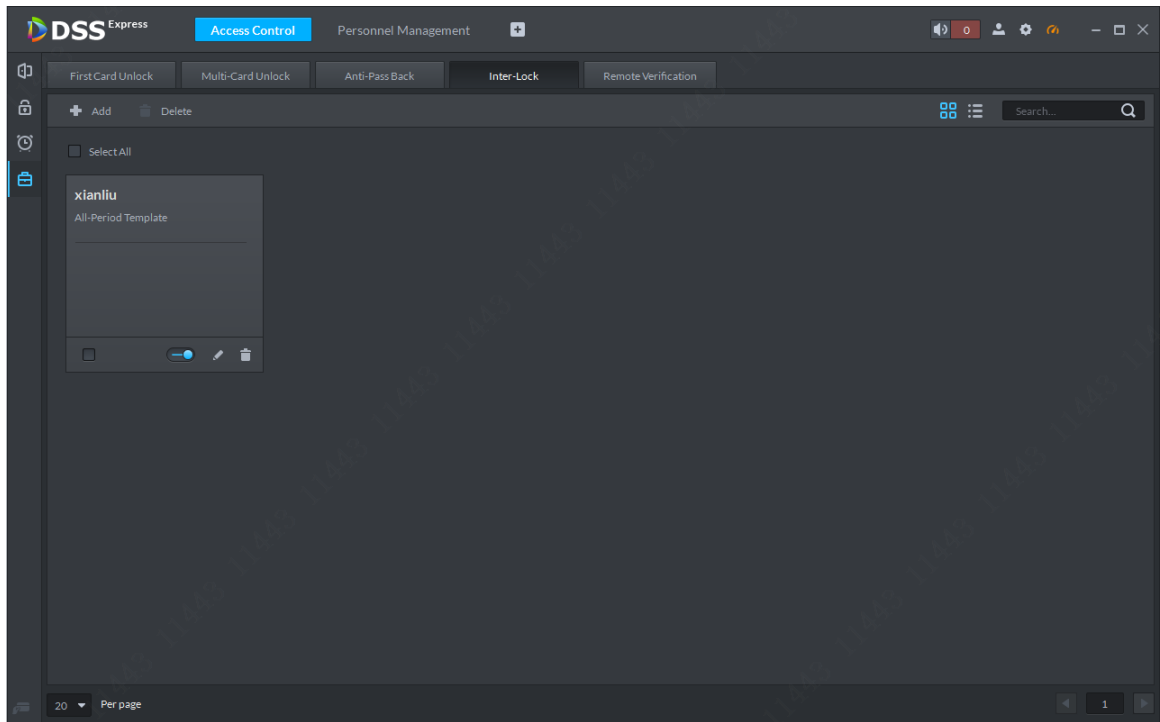


Figure 14-54

14.5.5 Remote Verification

Remote verification function note: set remote verification device, and within set period, when a user unlocks door via card, fingerprint, password and etc., he/she must click confirm box in Client to confirm unlock before he/she can unlock, steps:

- Step 1. Enter access control module and select advance function tab, in “Remote verification” tab, click New button **+ Add** to add remote verification plan, see Figure 14-55.

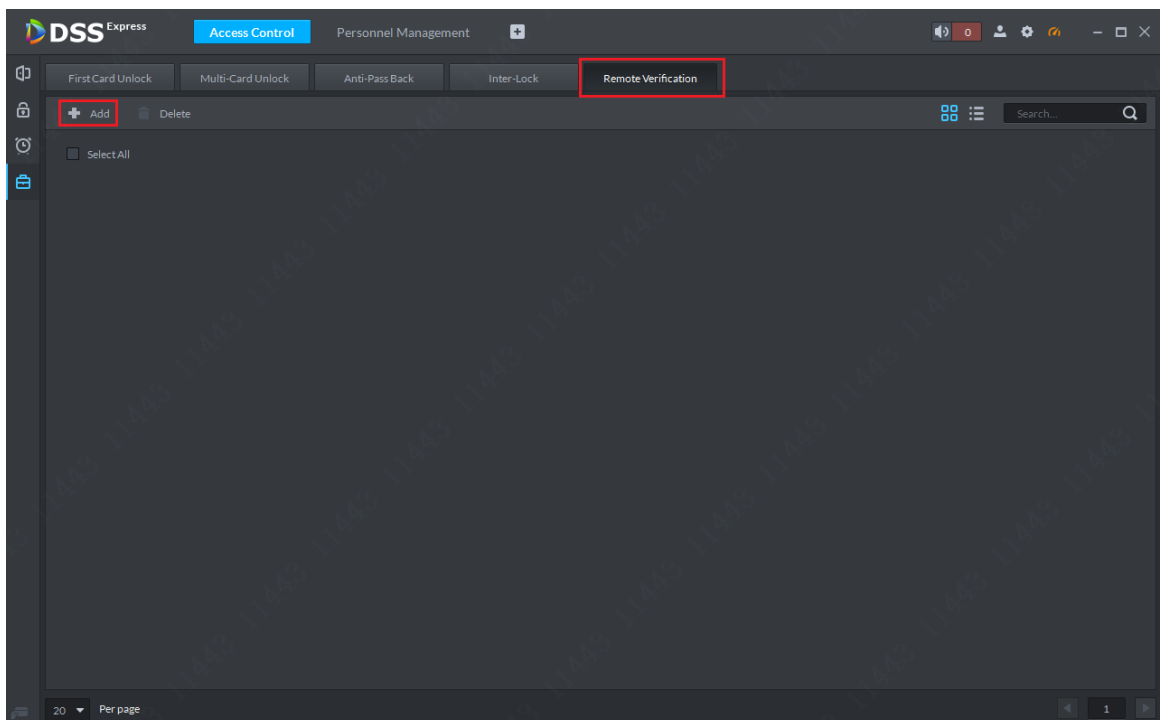


Figure 14-55

Step 2. In pop-up add page, select remote verification period and channel requiring remote verification. See Figure 14-56. Click “OK”button to complete.

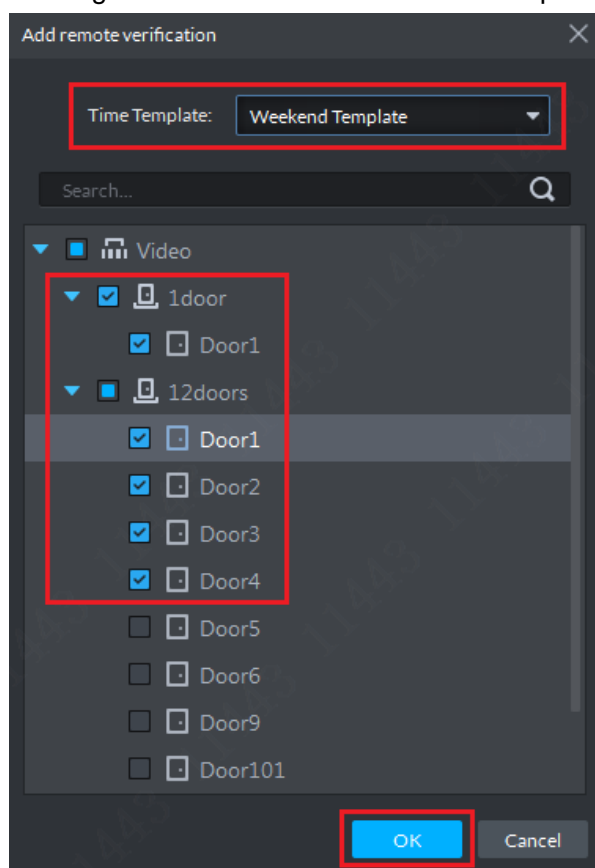


Figure 14-56

Step 3. After you complete adding, each channel can be independently opened and closes.

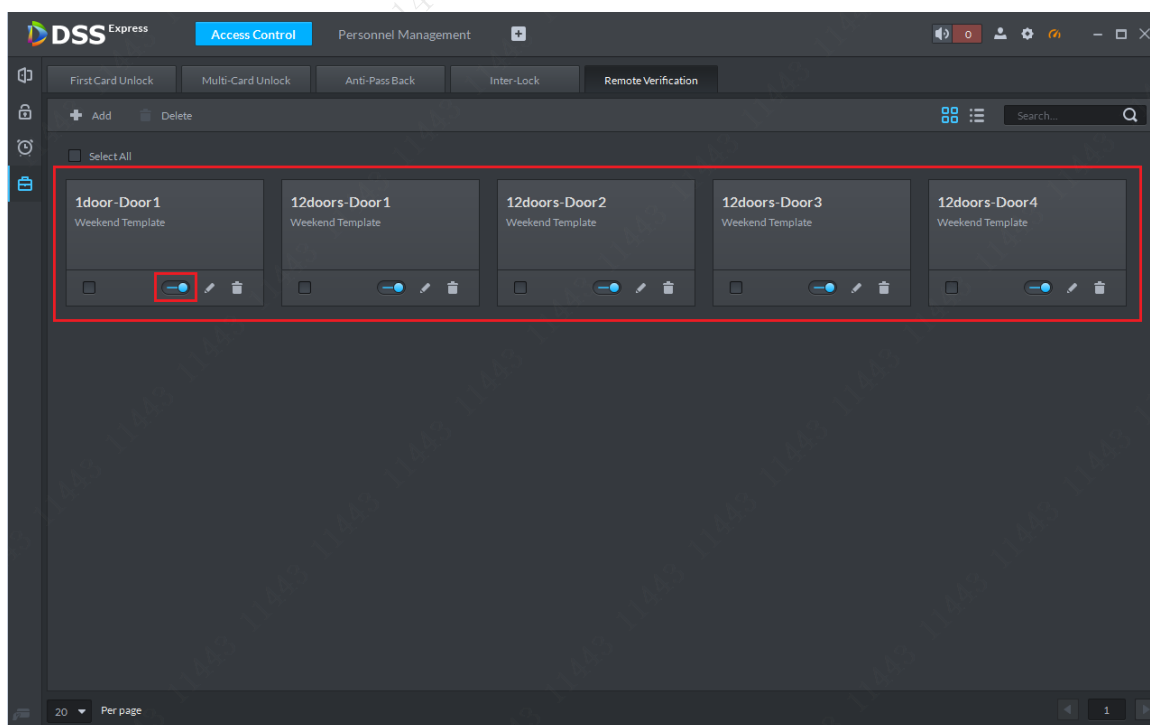


Figure 14-57

Step 4. When corresponding access control channel has operations of card, fingerprint,

password and etc., the Client will pop up box, so you can select to unlock or ignore it. Click corresponding button and the box will disappear.

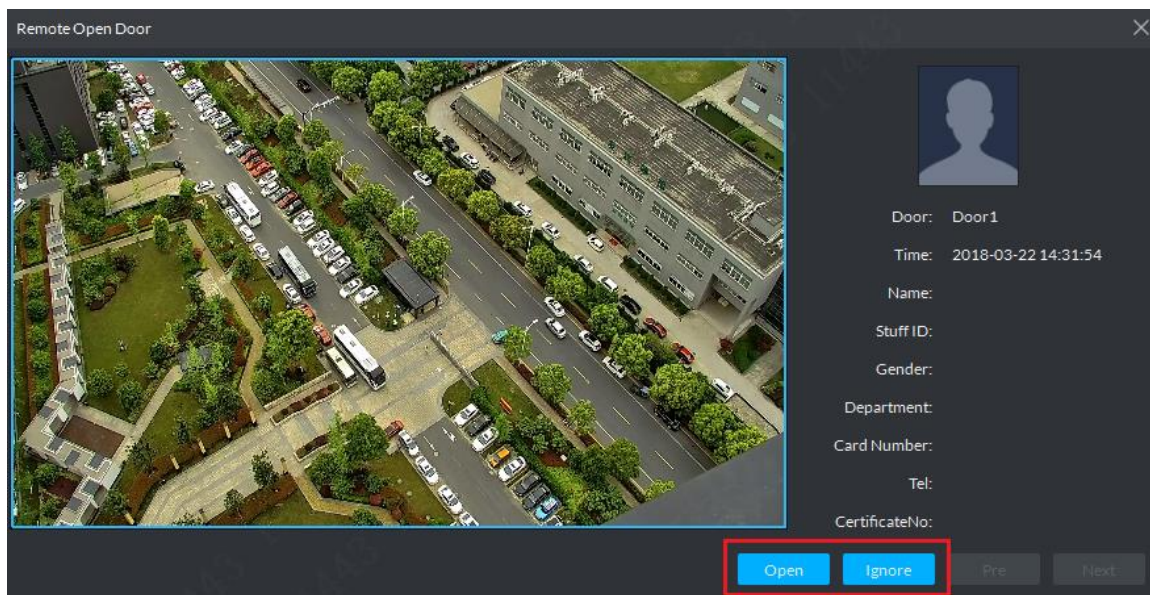


Figure 14-58

15 ANPR

15.1 Add ANPR Device

Step 1. In DSS Express Client homepage, click Device to enter device manager module.

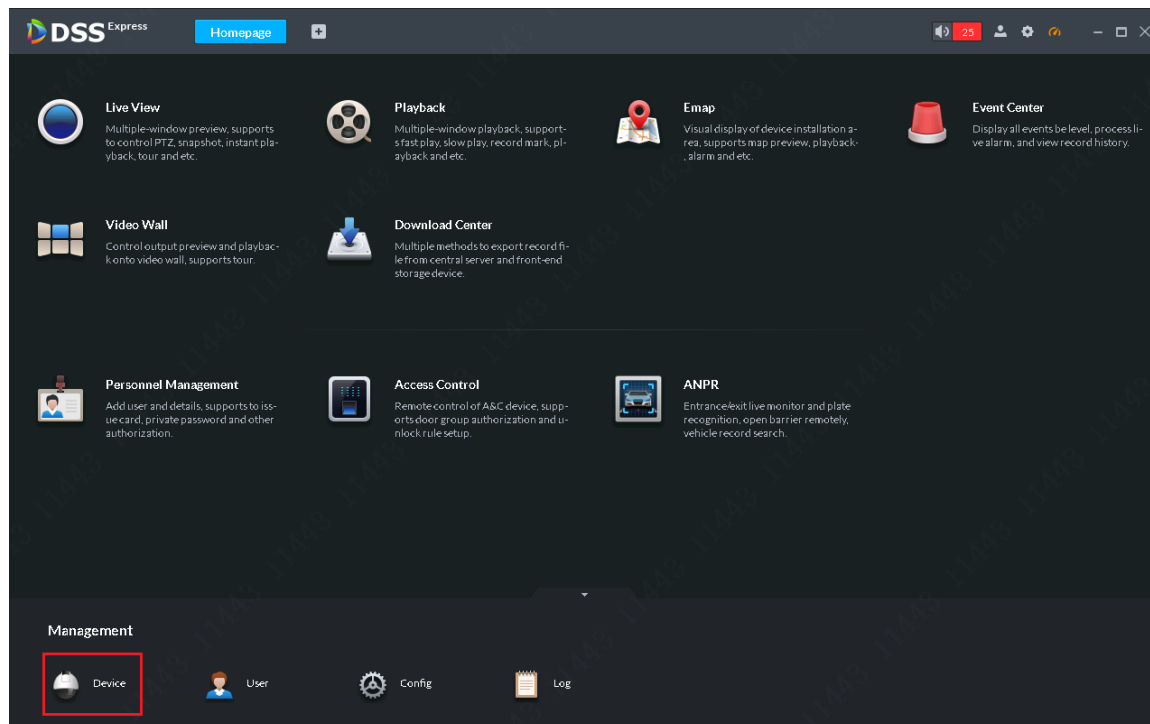


Figure 15-1

Step 2. In device manager page, click **+ Add** button, and then in pop-up box, select method to add device as by IP. Select ANPR for device type. According to instructions, fill in each info. Click Add button.

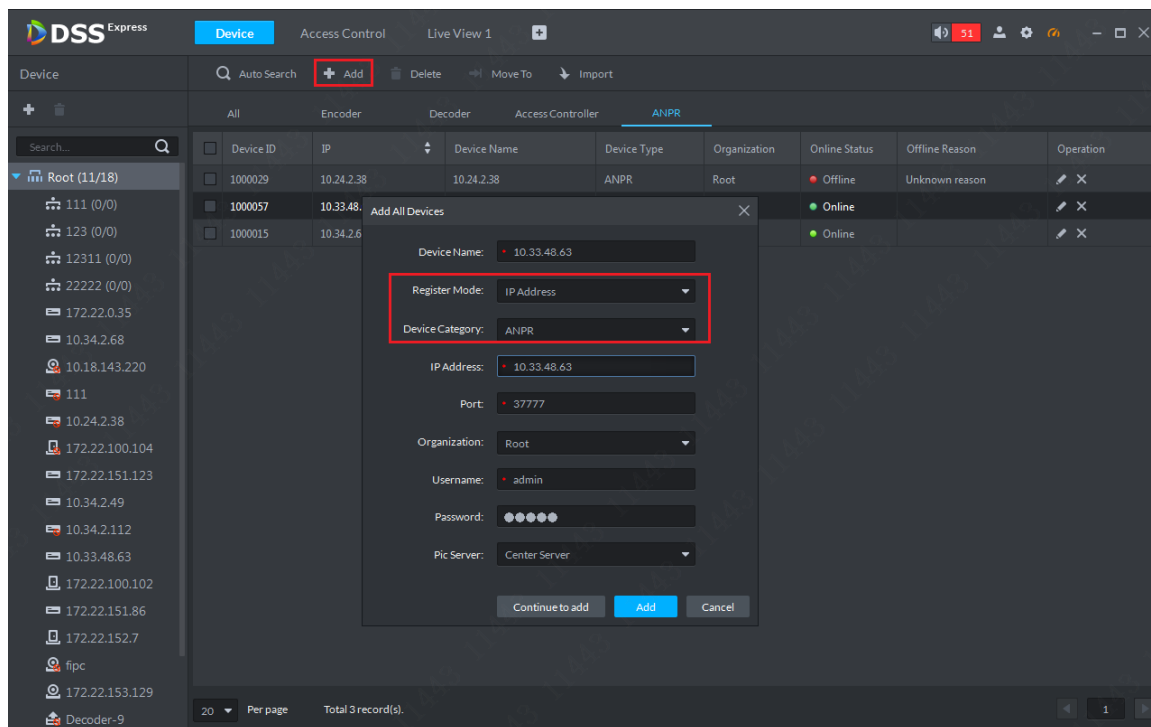


Figure 15-2

Step 3. After you add device, device list is shown below. Red is offline. Green is online.

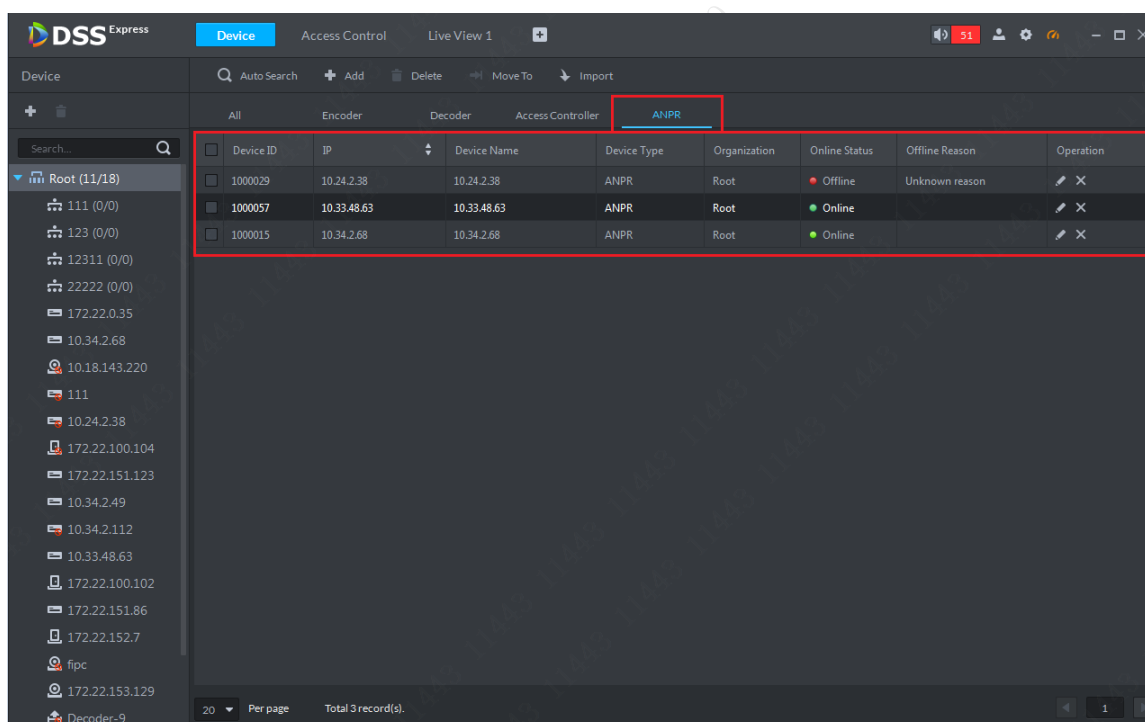


Figure 15-3

15.2 Picture Storage Keyboard Setup

You must set corresponding storage disk of ANPR channel before entering road surveillance application. If you do not set storage disk, all pictures from road surveillance will not be shown. See Ch 7.

15.3 Road Surveillance Application

15.3.1 Passed vehicle

Step 1. In Express Client homepage, click Entrance to enter road surveillance application.

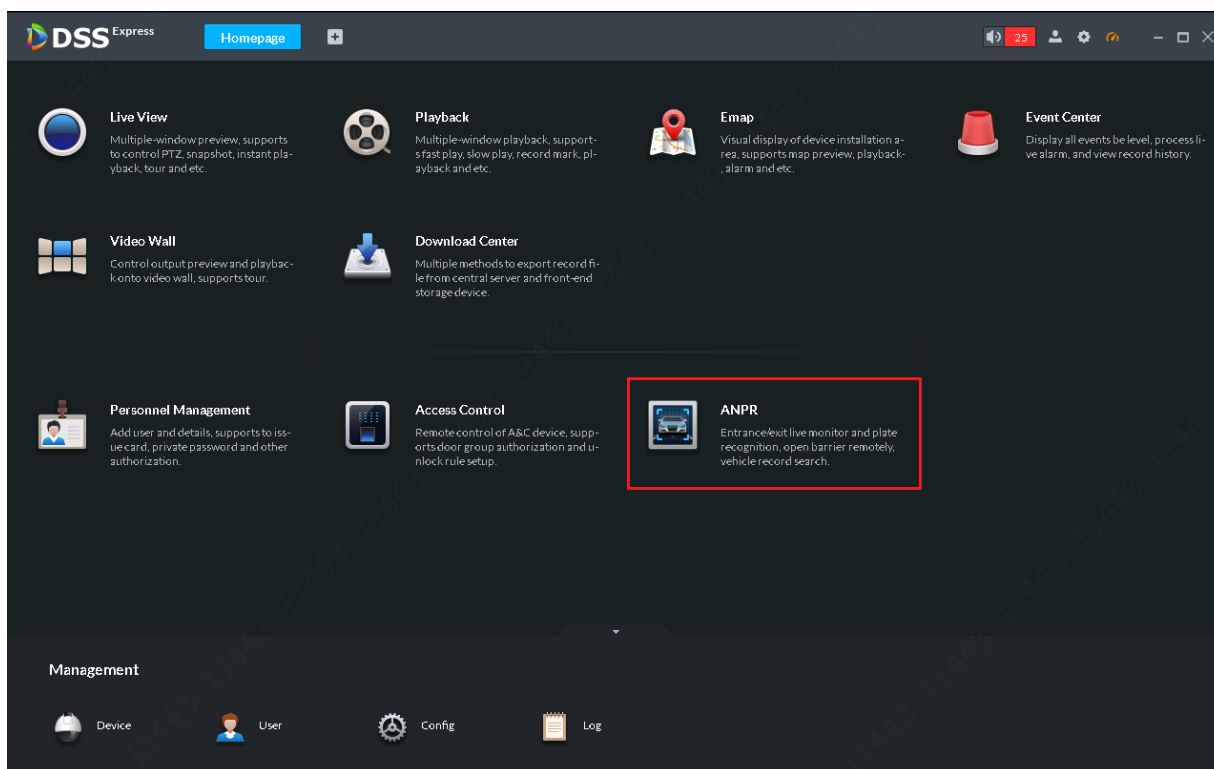


Figure 15-4

Step 2. In this page, select tab to enter road surveillance application. Default is single window of a electronic map, you can manually change number of windows.

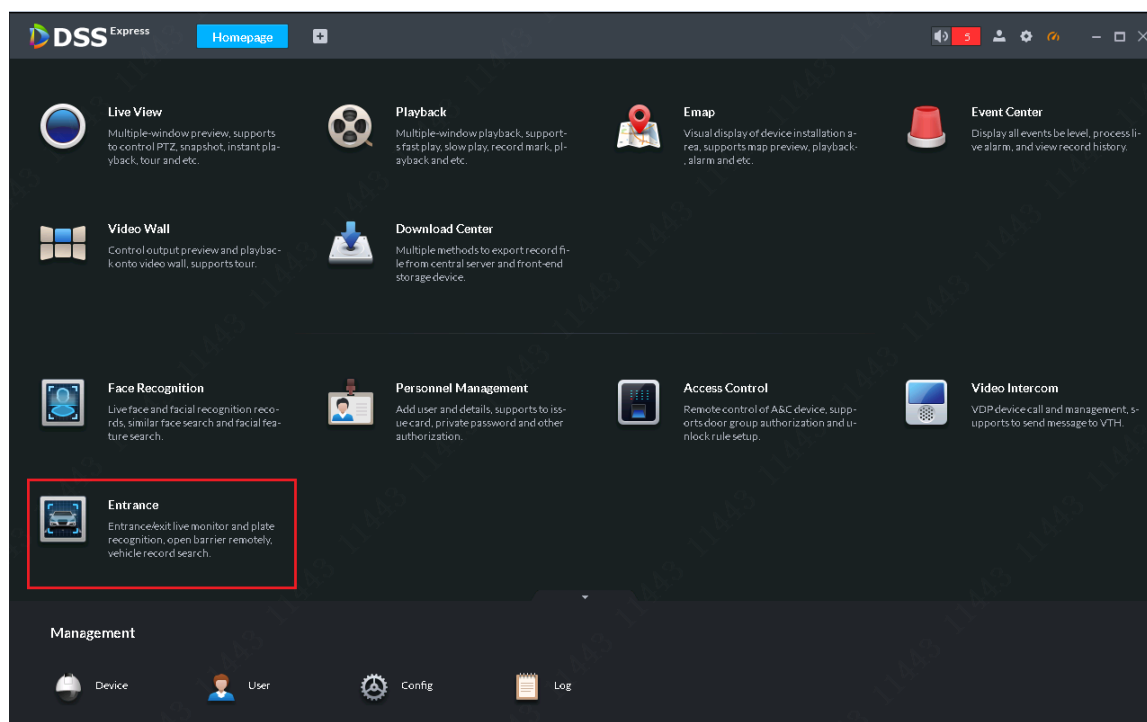



Figure 15-5

Step 3. In this shown page, click  button to select ANPR channel of passed vehicle.

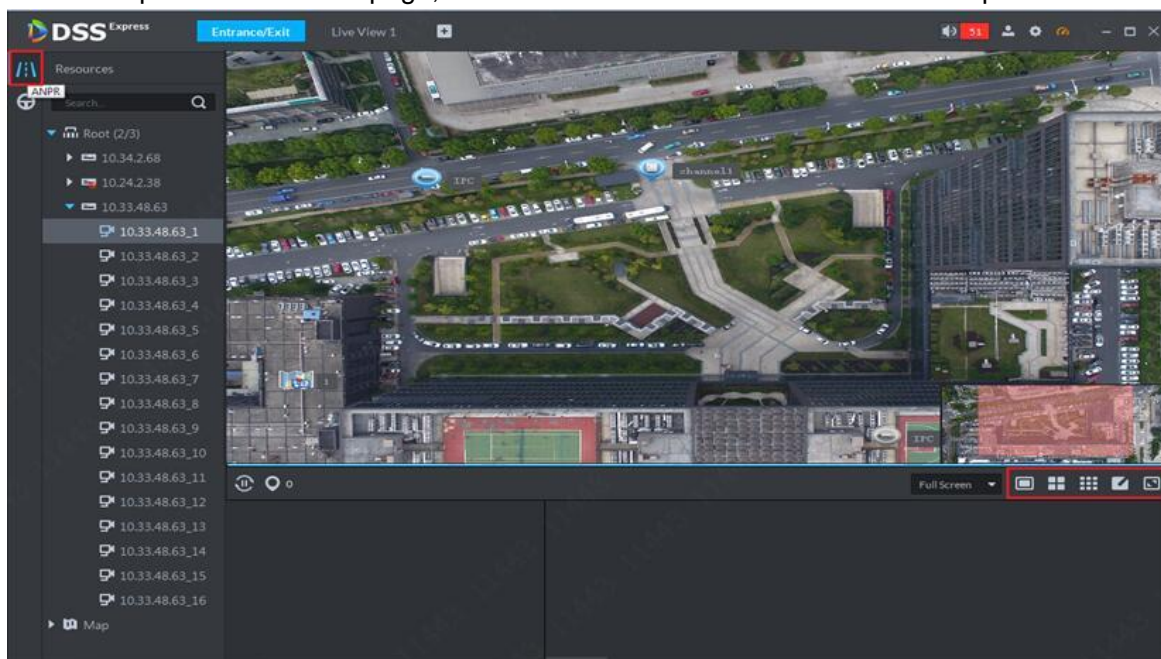


Figure 15-6

Step 4. In system pop-up page, select corresponding ANPR channel.

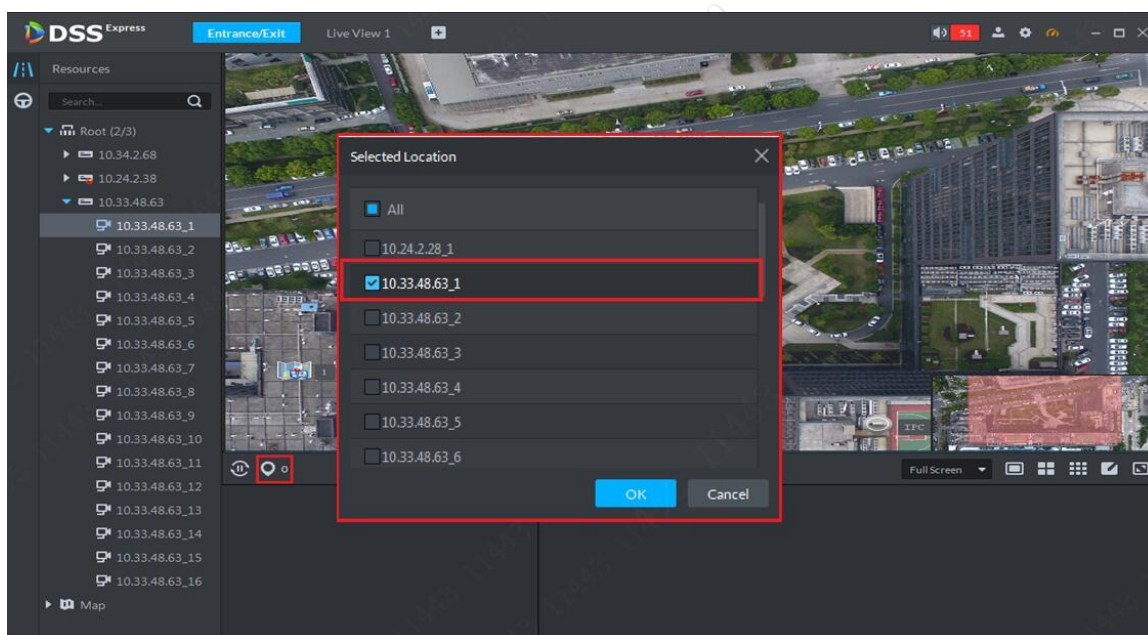


Figure 15-7

Step 5. After you select channel, system will mark the selected channel, and show the latest picture of passed vehicle in picture scrolling area.

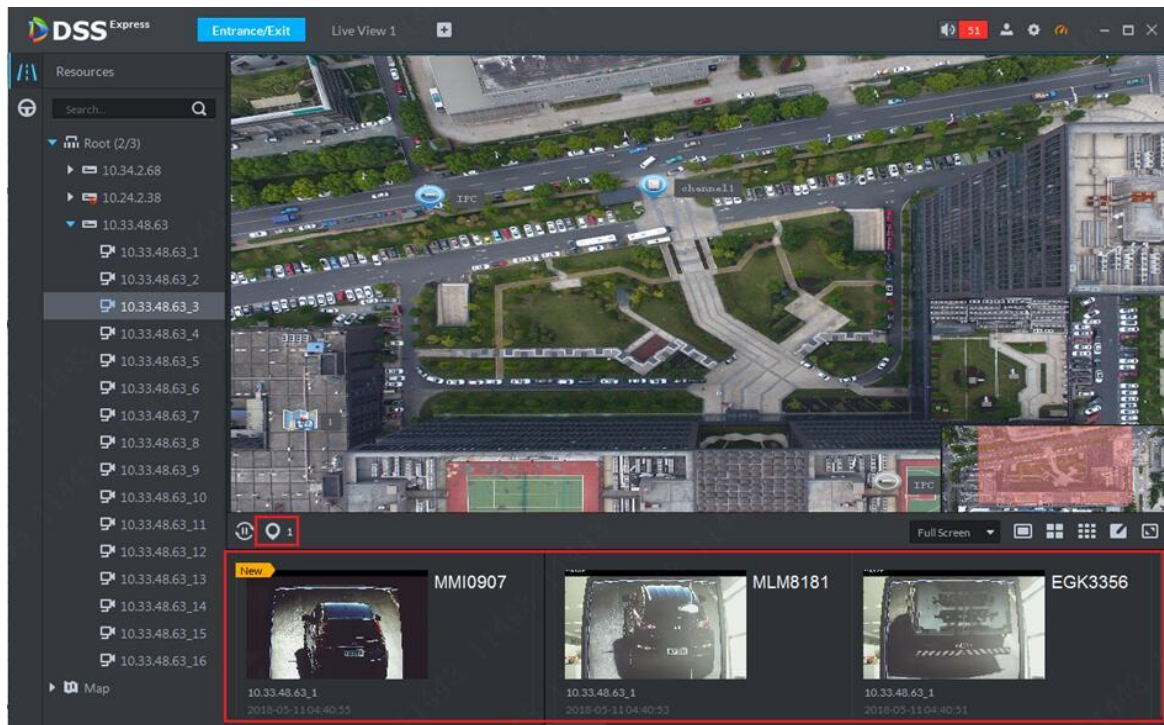


Figure 15-8

Step 6. Double click picture to view picture detail, including plate no., snapshot time, ANPR channel name, logo, vehicle color and etc.

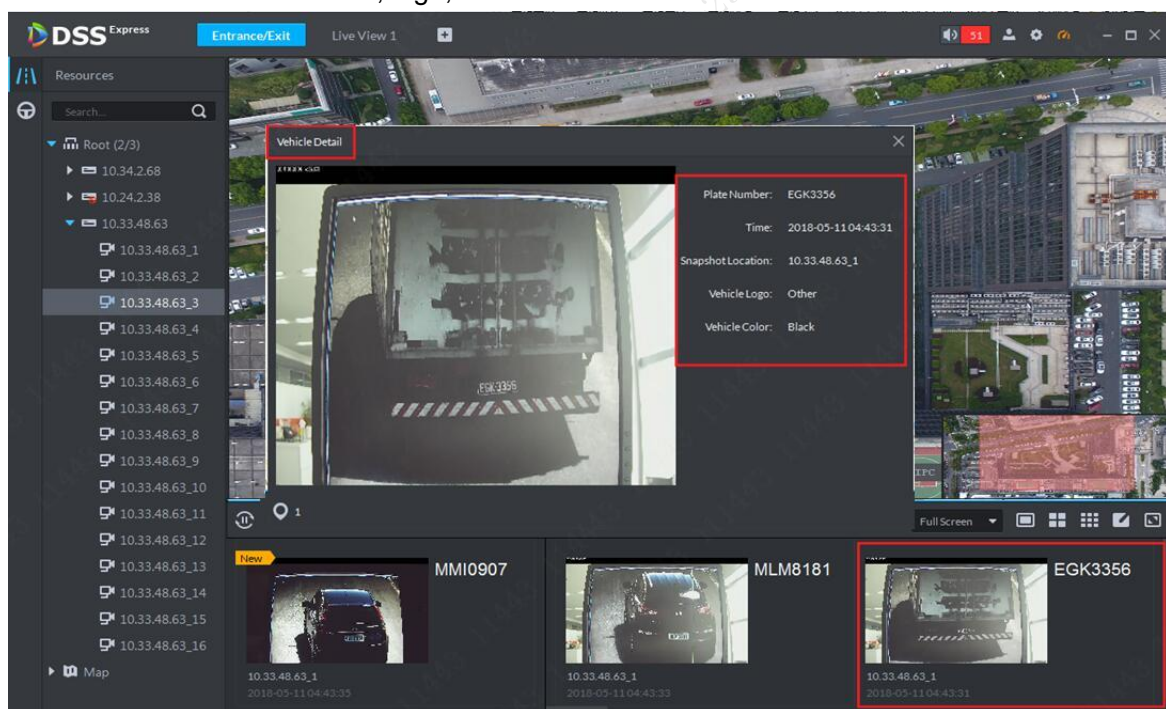


Figure 15-9

Step 7. Refresh pause. In actual application, if you want to pause refresh of passed vehicle record, click button shown below.

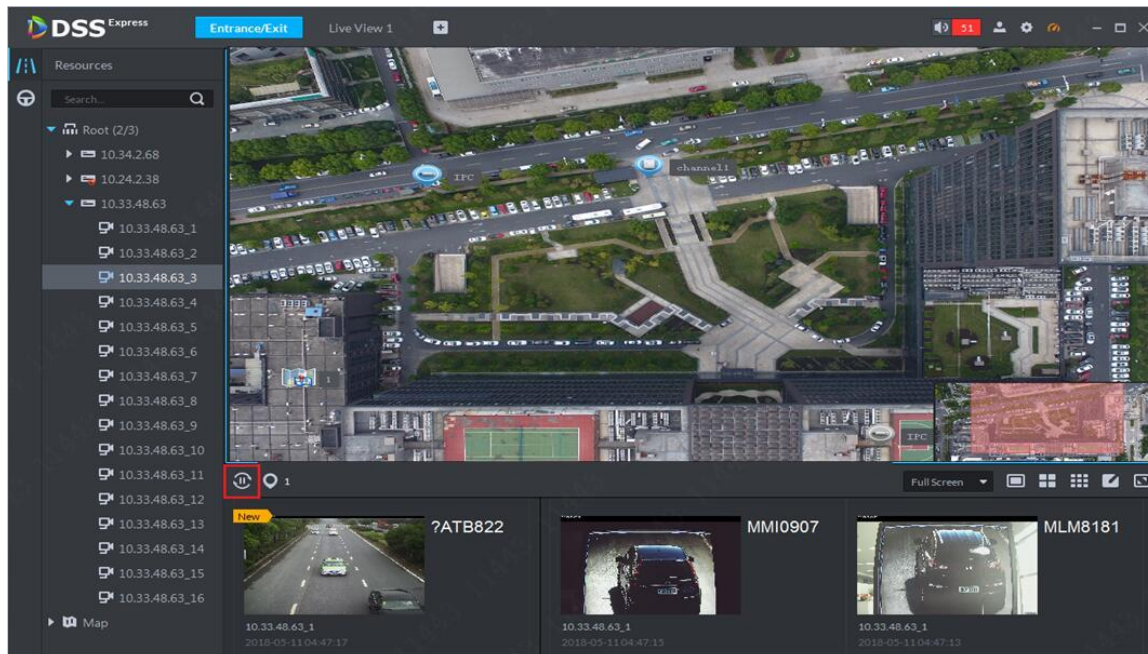



Figure 15-10

15.3.2 Passed Vehicle Record Search

In actual application, you can search record of passed vehicle.

Step 1. In road surveillance application, click  button to enter search page.

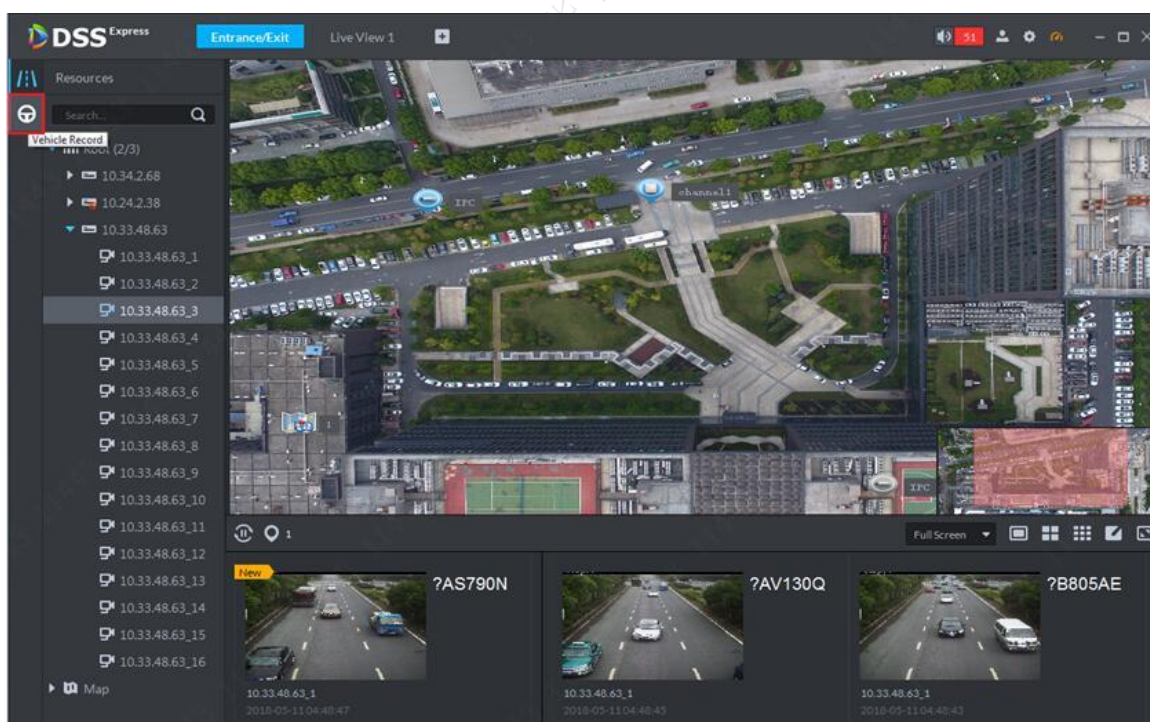


Figure 15-11

Step 2. Enter passed vehicle record search page. First select channel to search accordingly, and then select search time, plate no., plate color, vehicle type, logo, vehicle color, speed and etc. Click Search button.

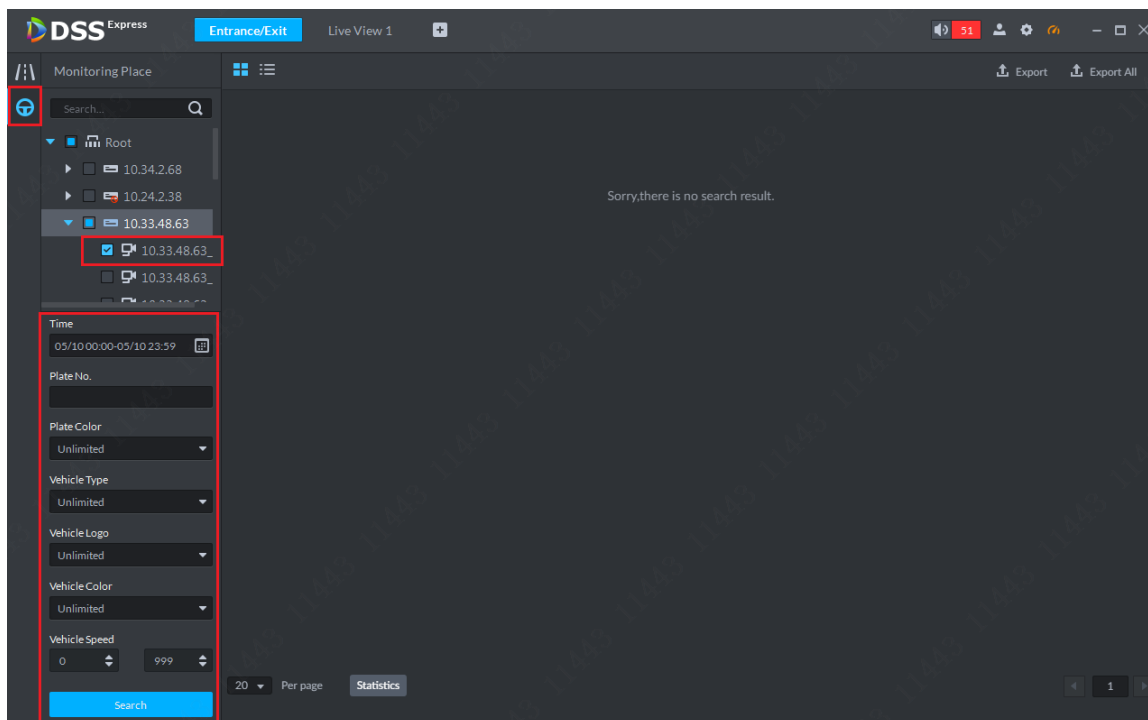


Figure 15-12

Step 3. Result is shown below. There are thumbnail and list modes of display. Here uses thumbnail.

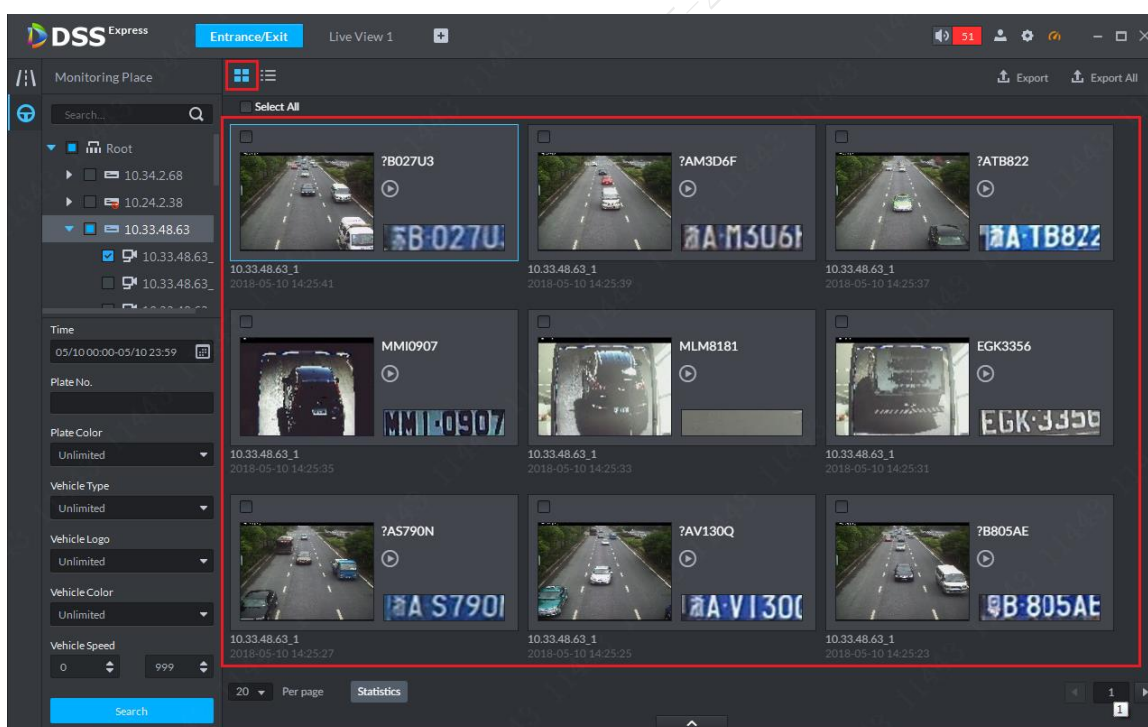


Figure 15-13

Step 4. Double click picture to view details, including: zoom in vehicle picture, plate no., snapshot time, ANPR channel name, lane, speed, plate color, vehicle type, logo, vehicle color.

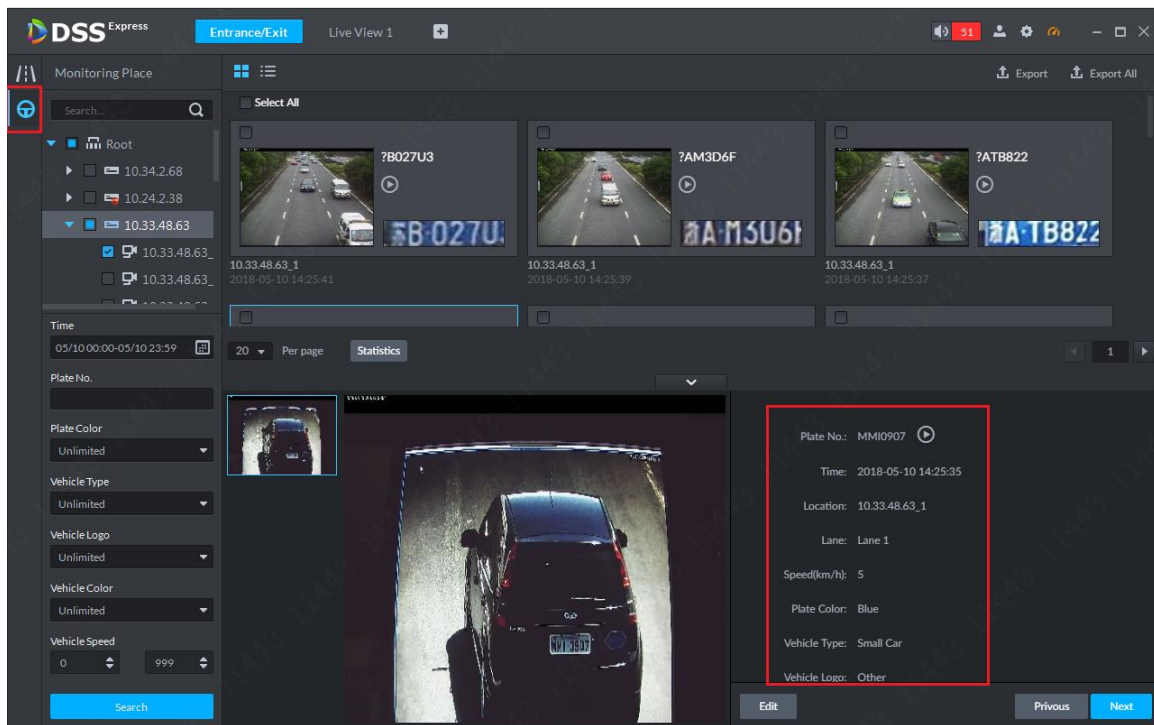


Figure 15-14

Step 5. If the system recognize some mistake in vehicle detail, you can click **Edit** button to manually change.

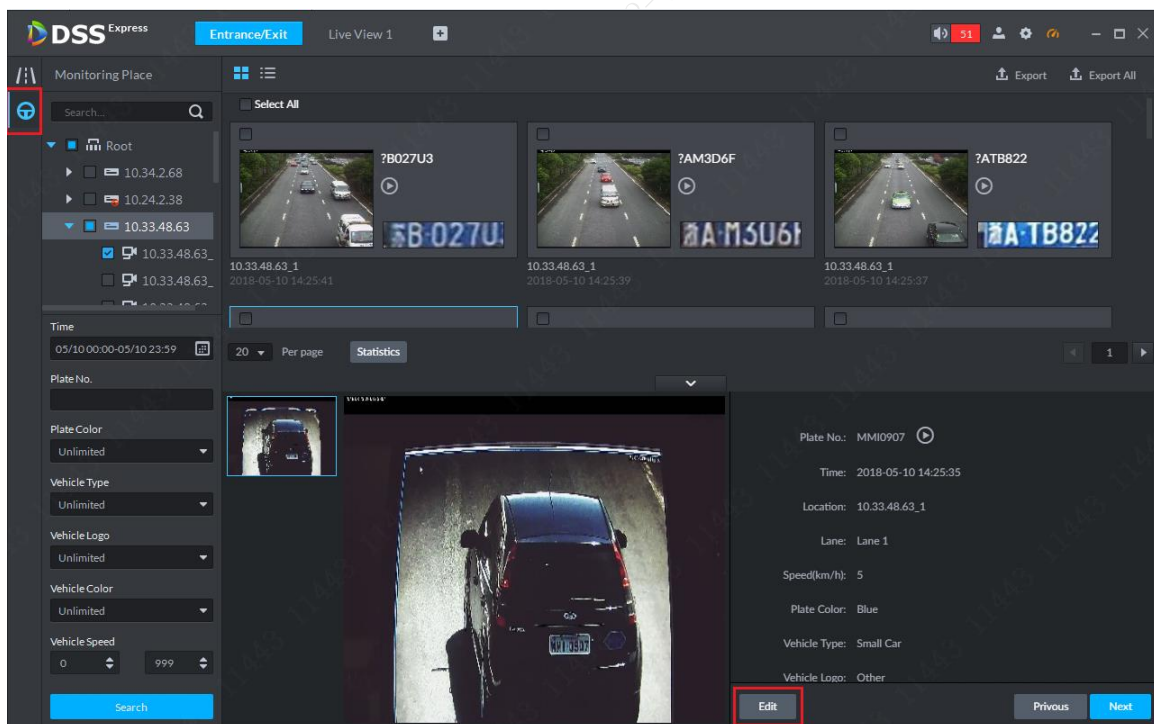


Figure 15-15

Step 6. Editable content: plate no., plate color, vehicle type, logo, vehicle color. Click Save button to save and if you want to cancel edited content, click Cancel.

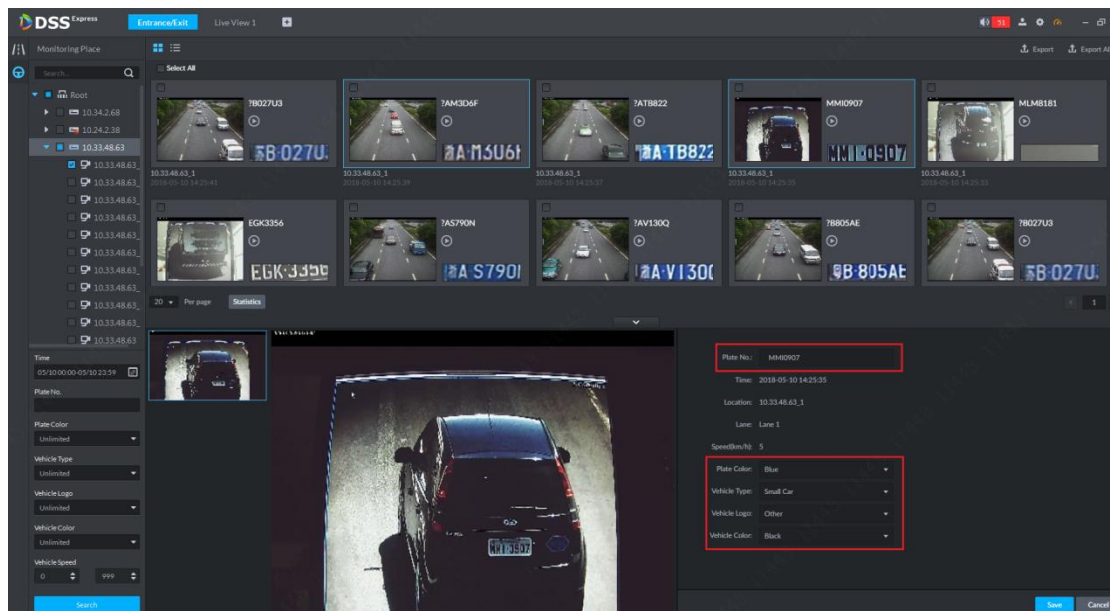



Figure 15-16

15.3.3 View Passed Vehicle Record

You must set general record plan for the ANPR channel before you can view passed vehicle record. Method of setup is similar with video channel, see Ch 6.3.

In passed vehicle record search result, select  of corresponding passed vehicle record or click Play button in detail to view scenes before and after snapshot.

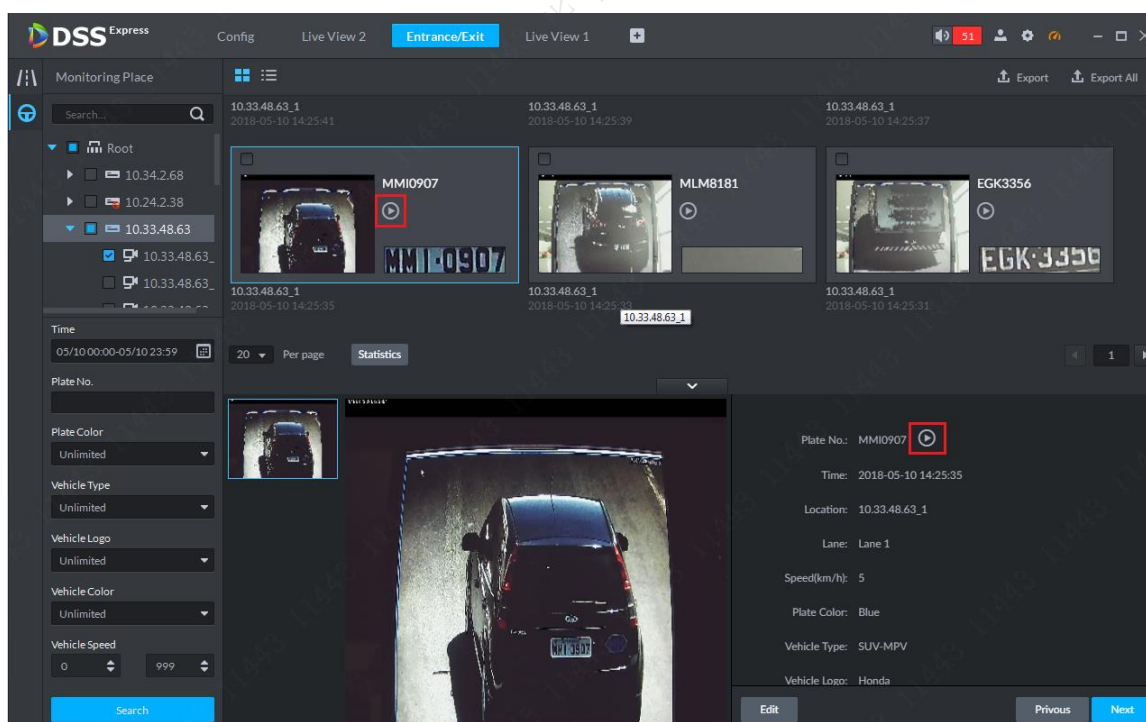


Figure 15-17

15.3.4 Export Passed Vehicle Record

A user can export some or all of passed vehicle record.

Step 1. In passed vehicle record search result, check record you want to export, click Export button. You can export all records.

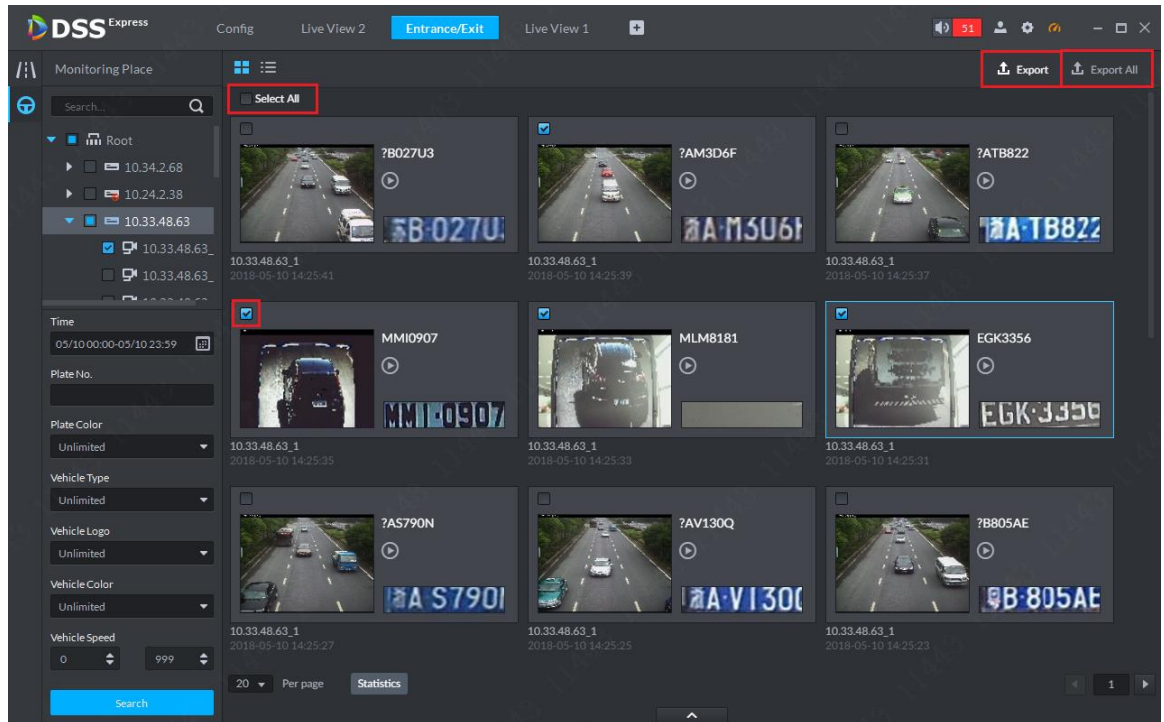


Figure 15-18

Step 2. Please select storage path following system prompt. You can see the following figure is successful.

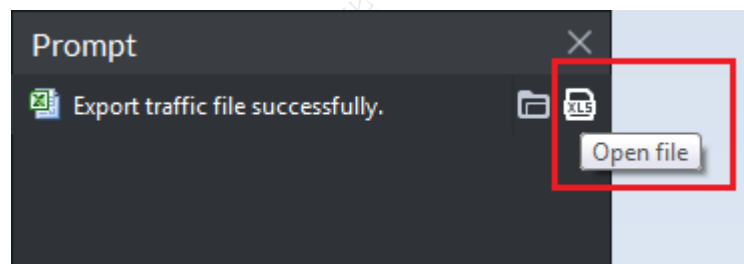


Figure 15-19