

Figure 8-2

Step 3. Select time to search, click to open calendar, if there is record, you can see a blue dot on date, see Figure 8-3. Please select date with record to search.

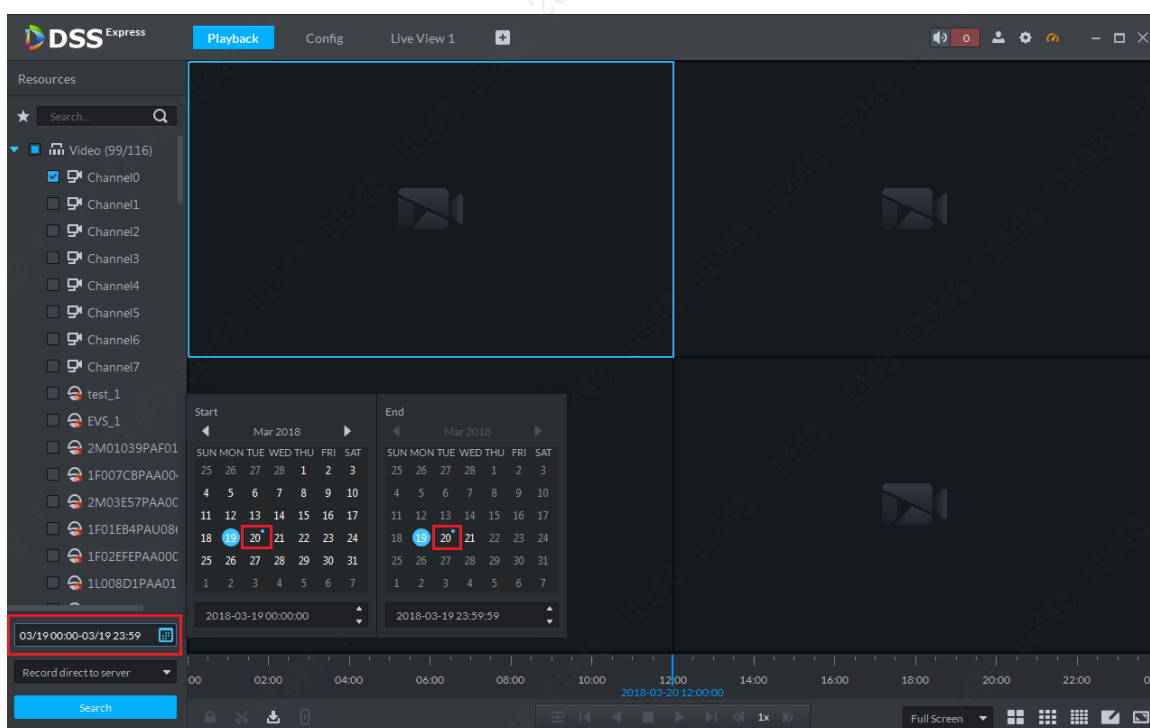


Figure 8-3

Step 4. Record search result is in Figure 8-4. Double click time with record on time axis to playback record by time (you can scroll to zoom in time axis). Click play button in window to start play from the earliest time.

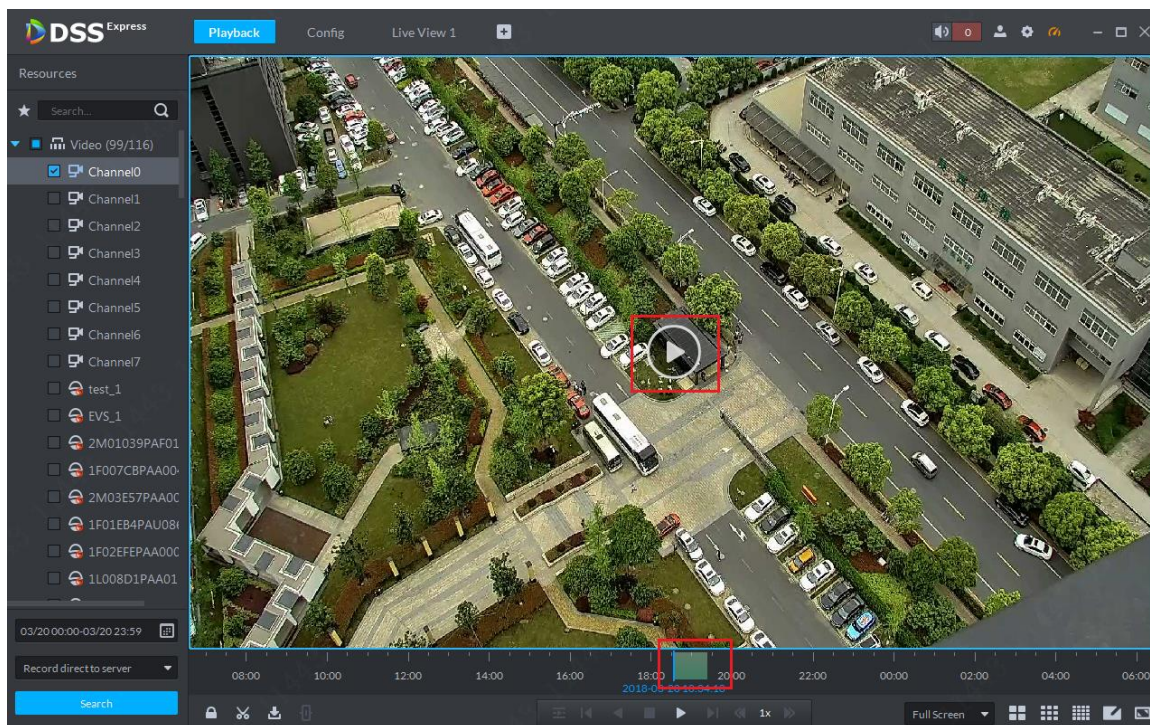


Figure 8-4

Step 5. During playback, you can control record via tools at bottom, see Figure 8-5.

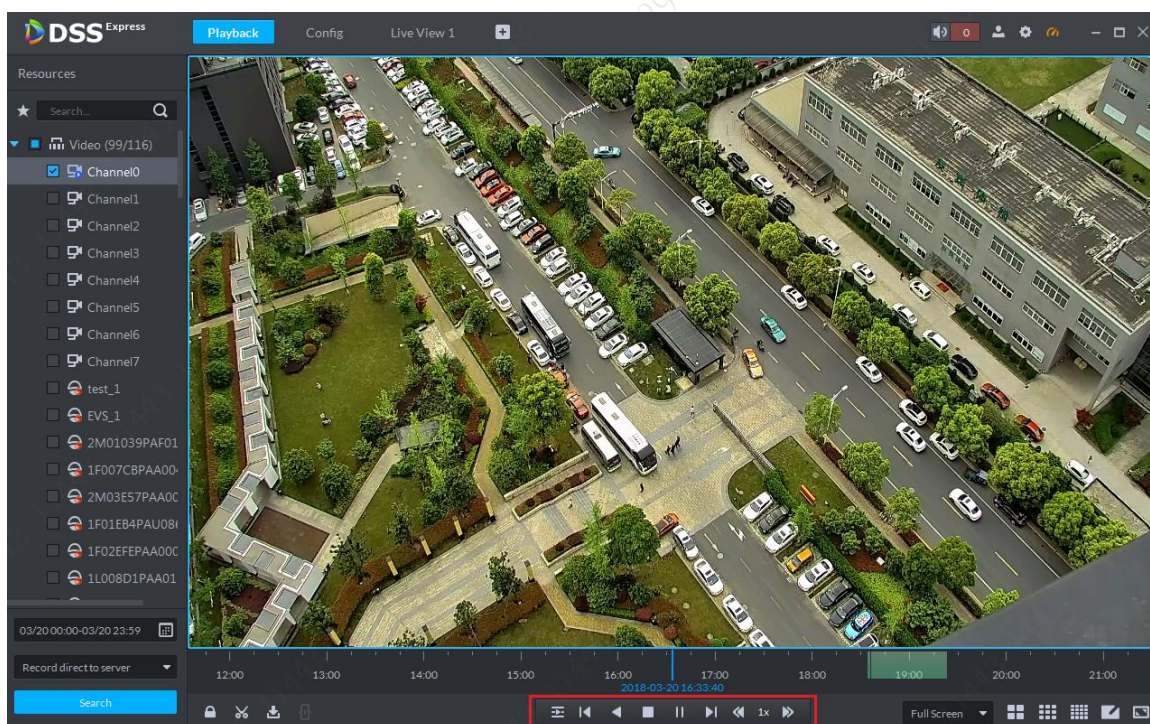



Figure 8-5

8.2 Download Record

Step 1. Follow previous section, in playback page, click cut  button, and select start time and end time on time axis to download record. See Figure 8-6. Record download supports many formats: dav, avi, mp4, flv and asf.

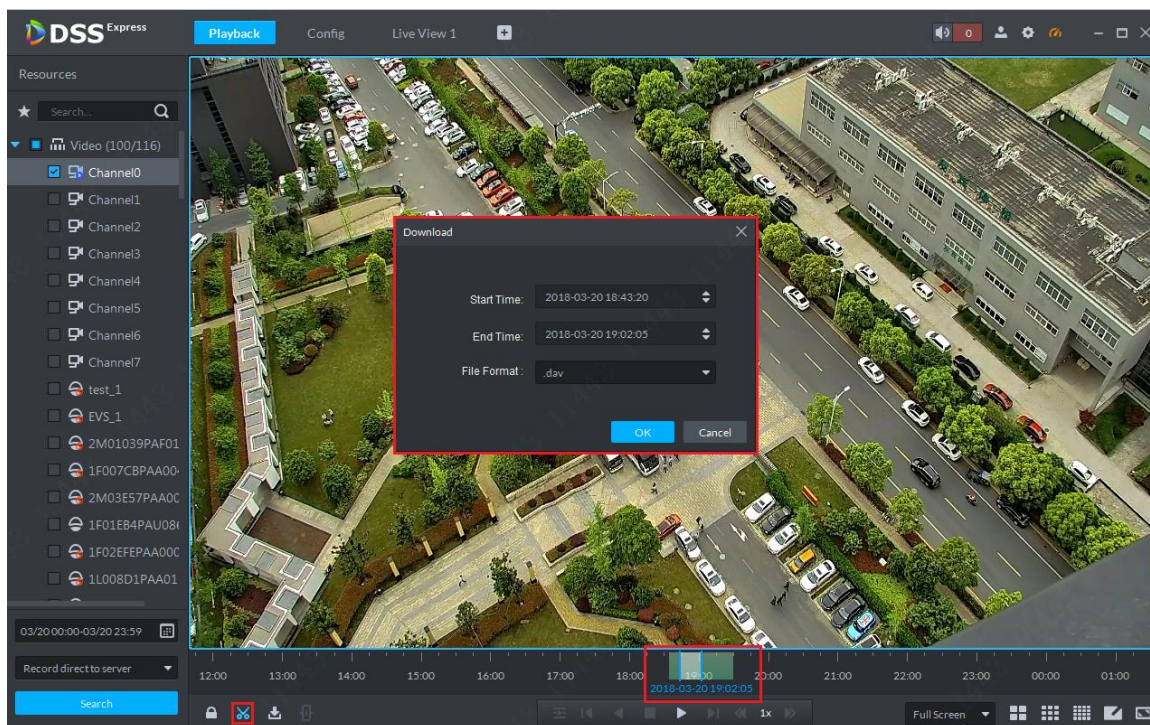


Figure 8-6

Step 2. Click download and go to download center, see Figure 8-7. A user can pause and delete downloading task via control button.

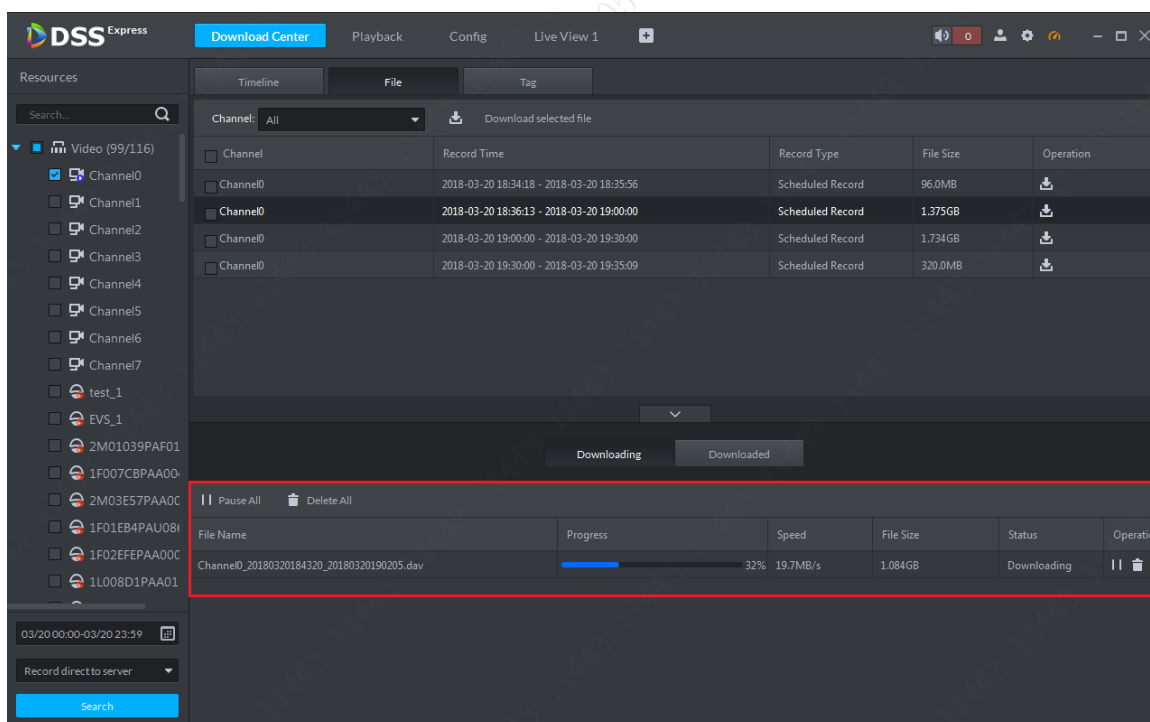



Figure 8-7

Step 3. You can click download button  to enter download center, you can download record by record list and tag. See Figure 8-8.

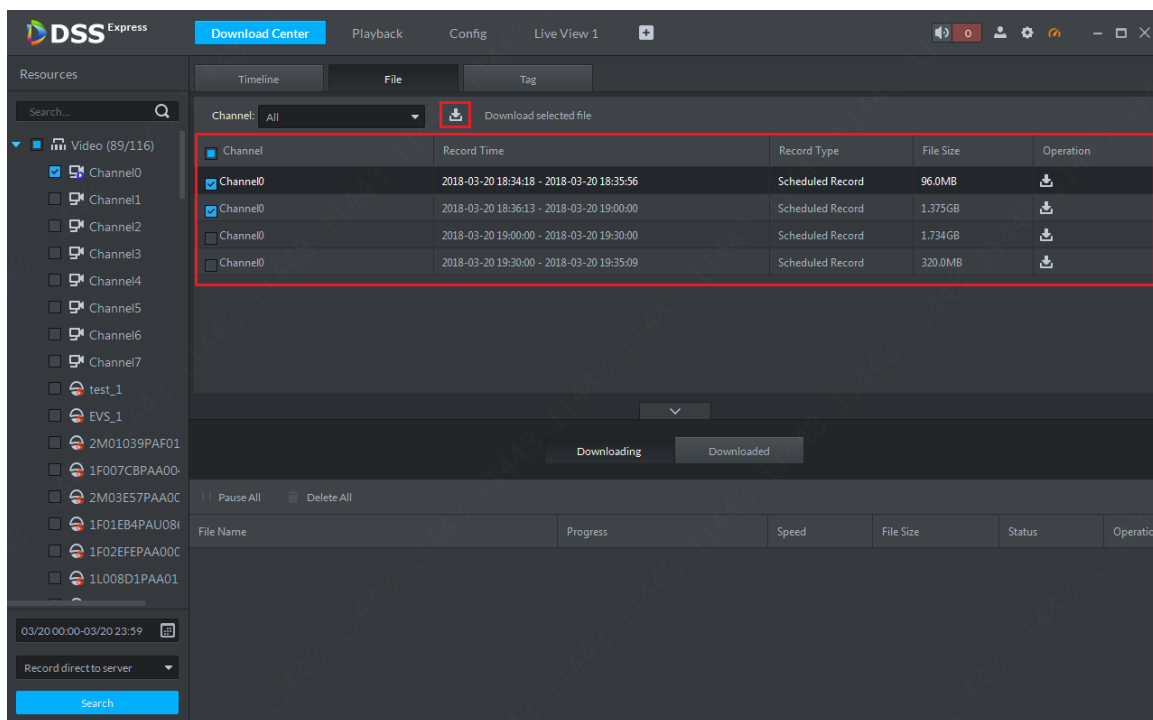


Figure 8-8

9 Download Center

Download center provides 3 types of download modes, including timeline, record list and tag. You can pause, delete downloaded record.

9.1 Download Record

Before downloading, please select channel, time, storage position accordingly to search record, see Figure 9-1. Result in Figure 9-2.

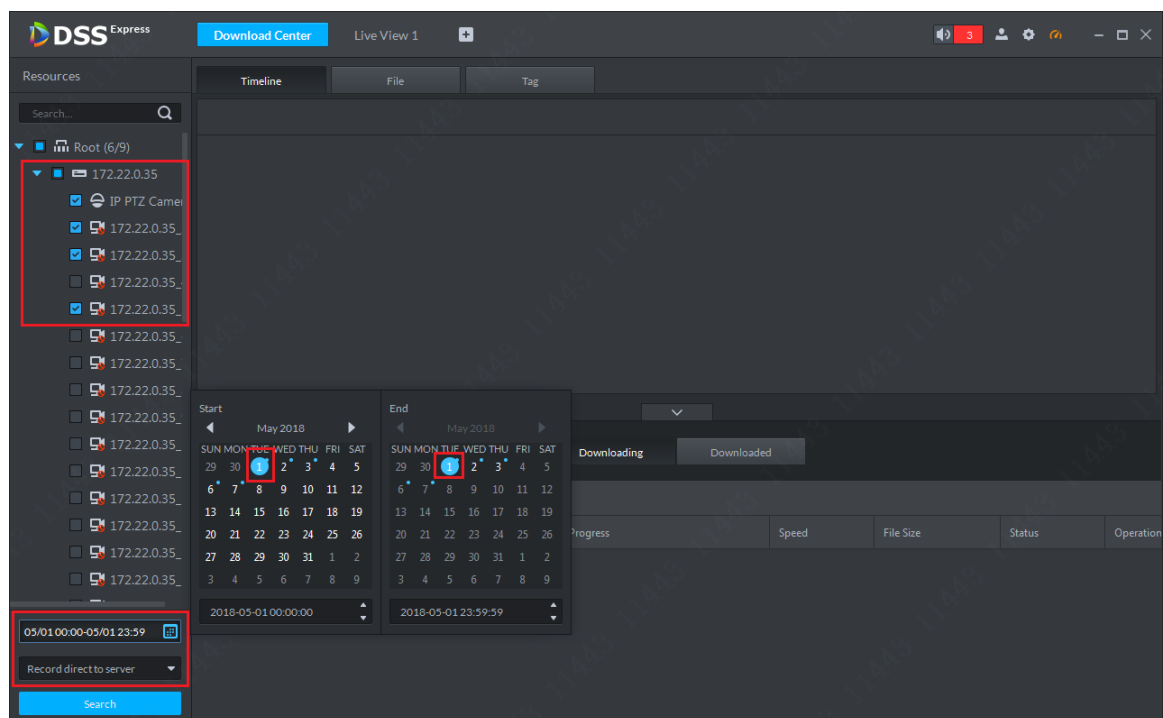


Figure 9-1

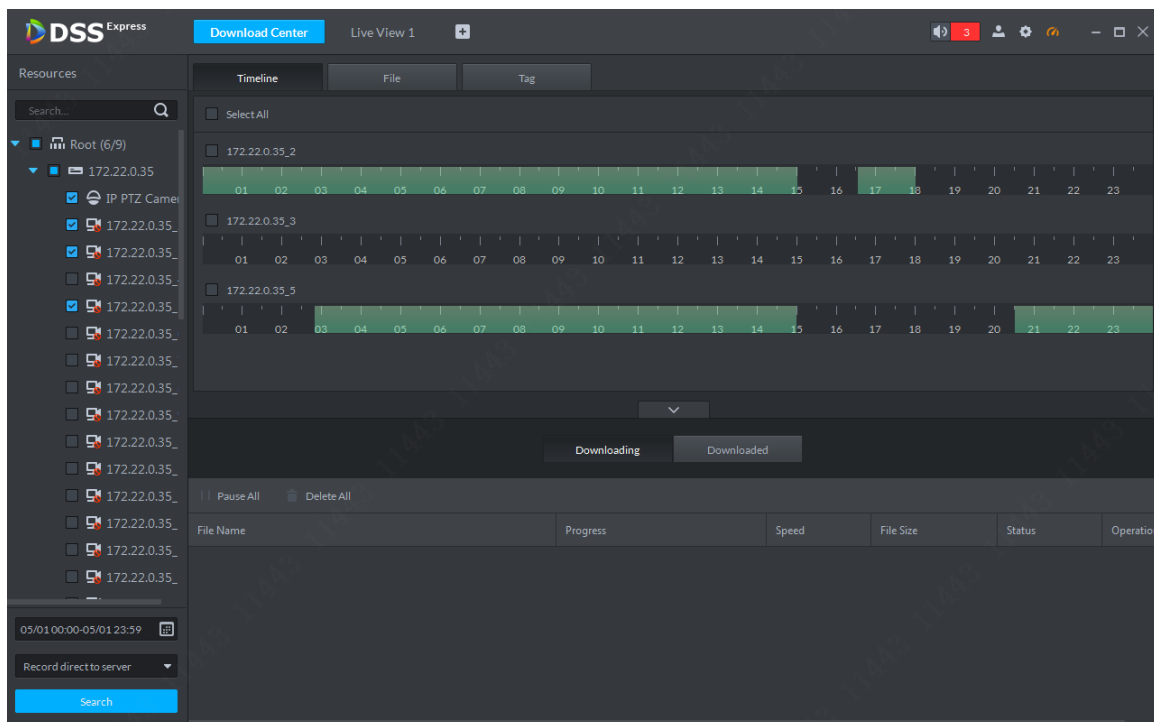


Figure 9-2

9.1.1 Timeline Cut

Step 1. In search result, click Timeline tab, and select display of timeline, see Figure 9-3.

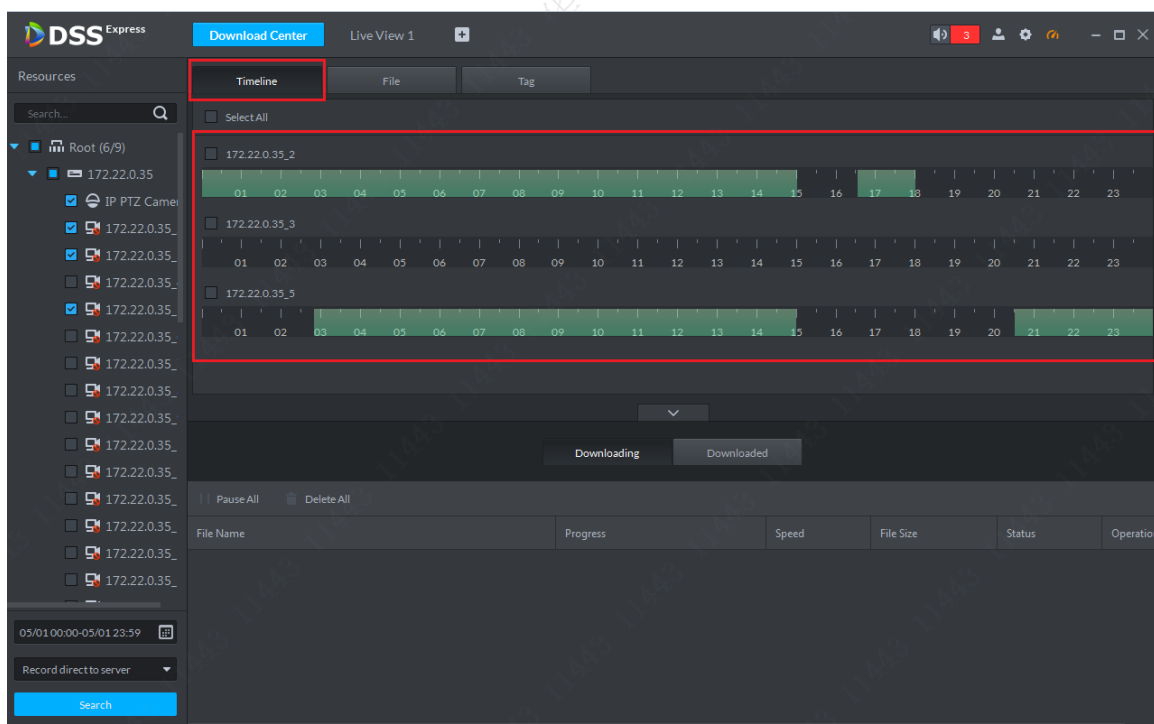


Figure 9-3

Step 2. Move mouse to timeline, you can see a small pair of scissors. You can click timeline to select start time and end time, then in system pop-up prompt box, confirm the selected time range and select record storage format. See Figure 9-4. There are 5 formats: dav, avi, mp4, flv and asf. Please select accordingly.

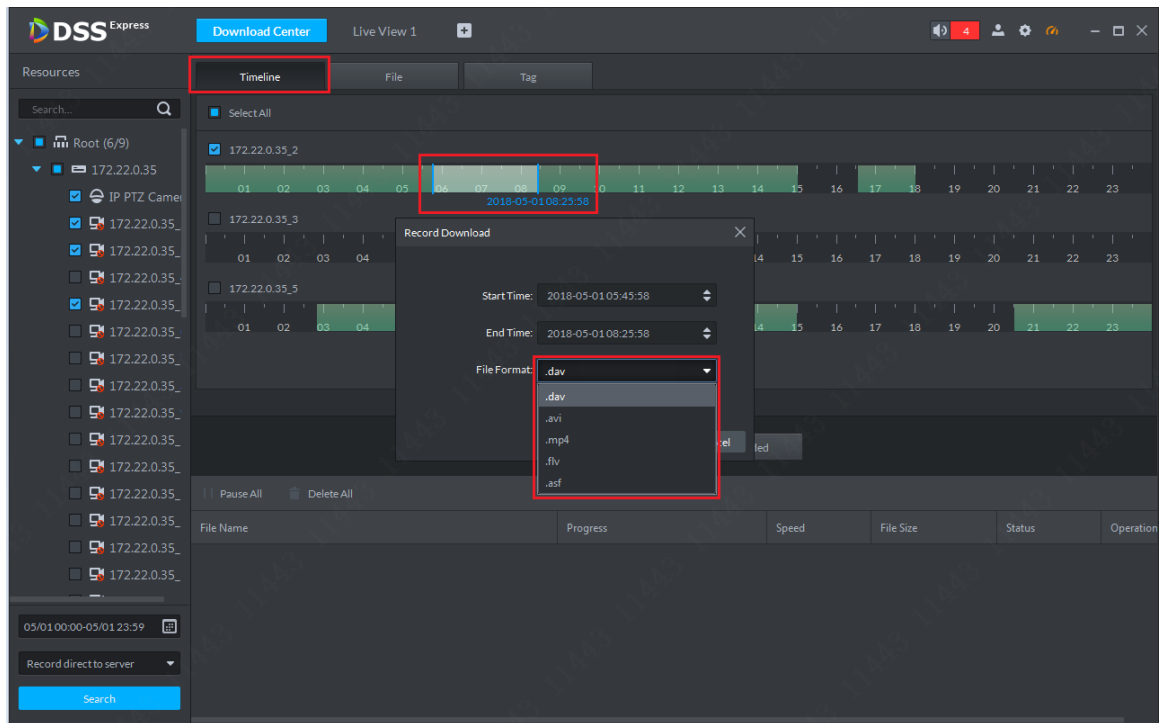


Figure 9-4

Step 3. Confirm download info and click OK to start downloading. See Figure 9-5.

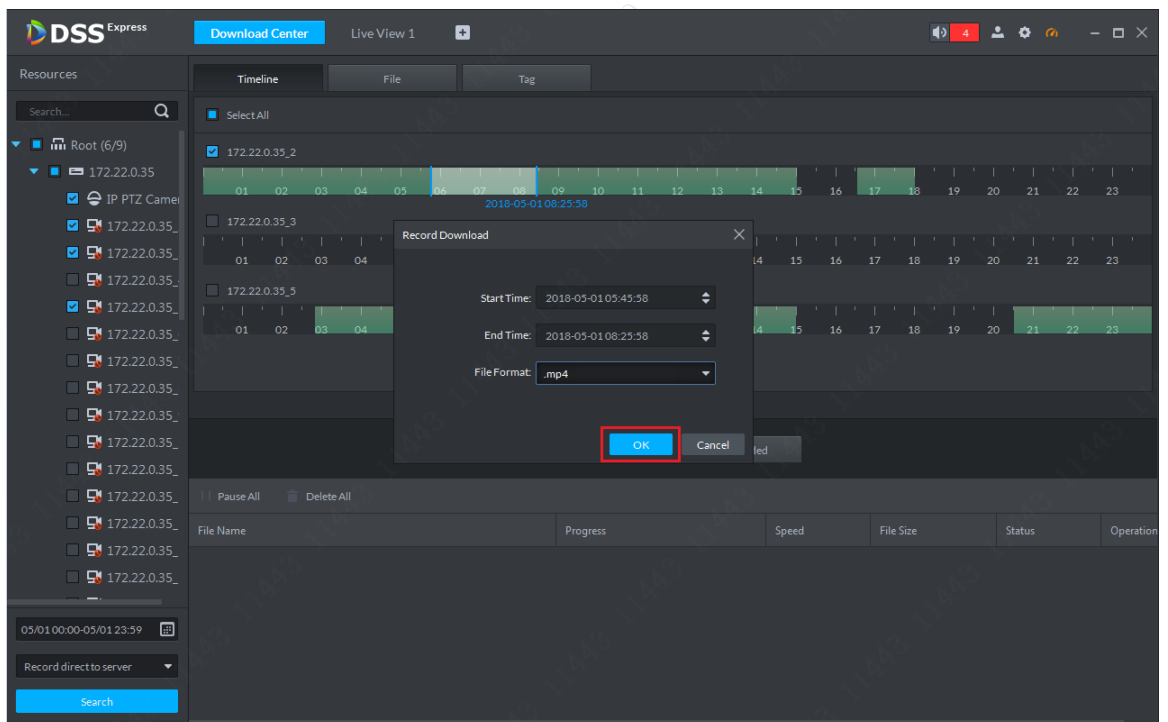


Figure 9-5

Step 4. Progress of download is shown below. A user you pause, start and delete the downloading.

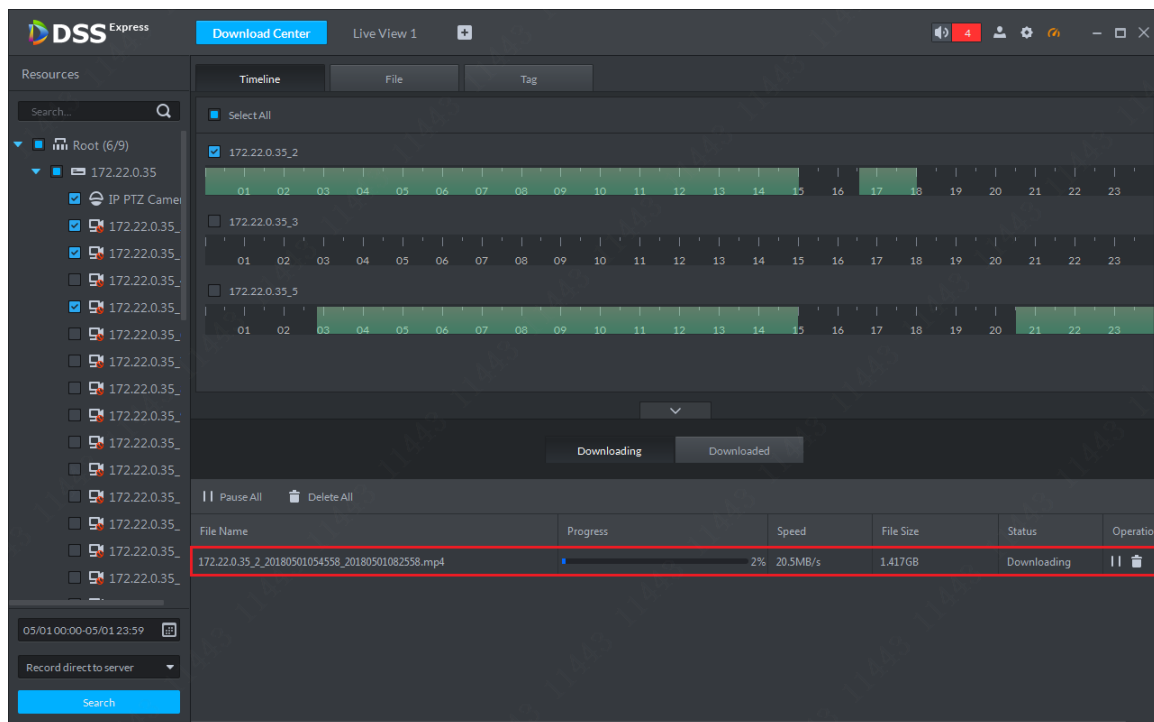


Figure 9-6

9.1.2 Select Record List

Step 1. In search result, click File tab and select record display method, see Figure 9-7.

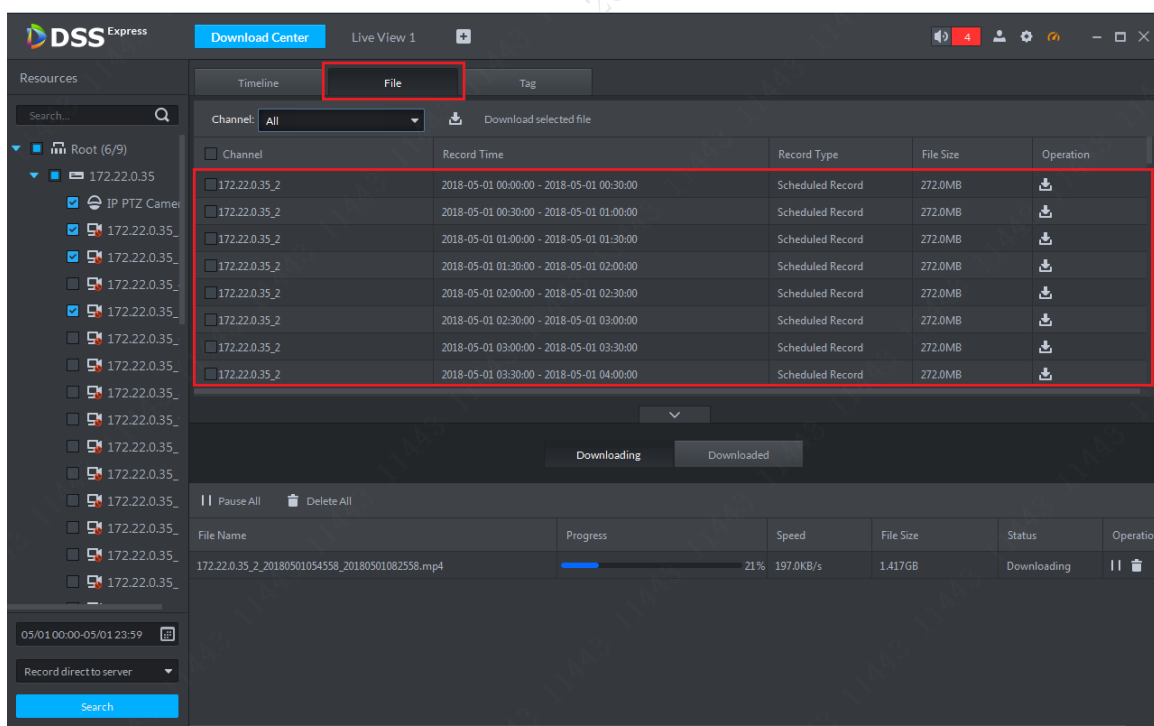


Figure 9-7

Step 2. A user can check more than one record file to download. Click Download to batch download, or user can click corresponding download button of a file, see Figure 9-8.

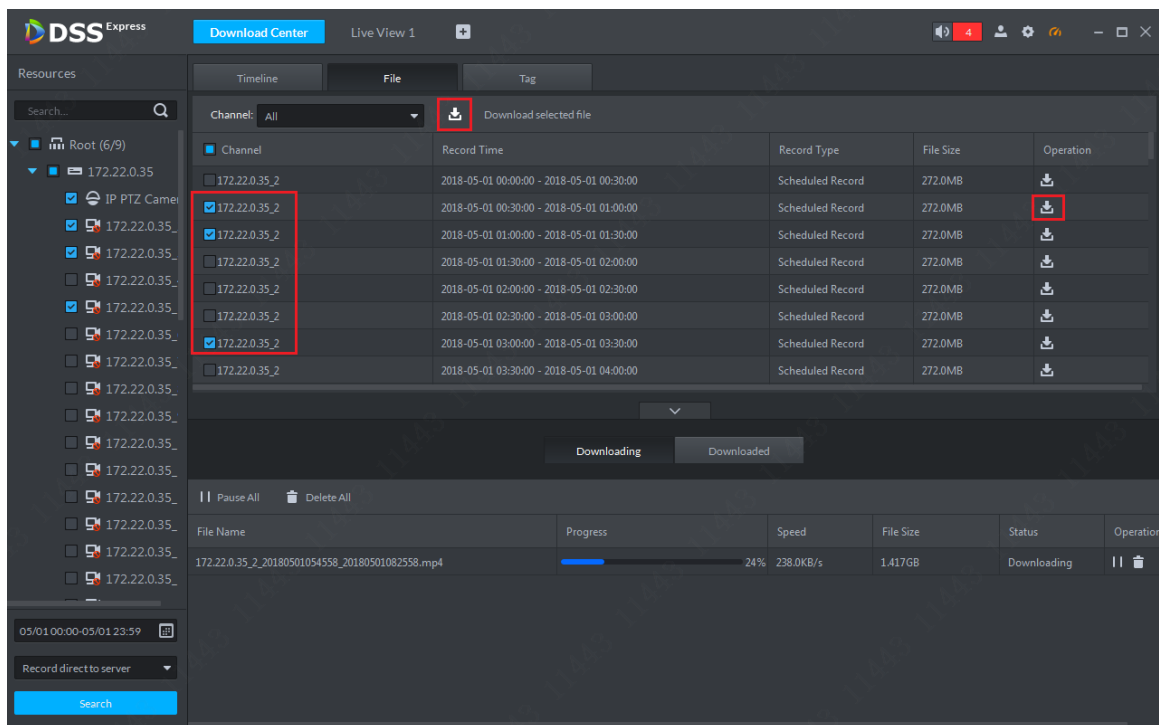


Figure 9-8

9.1.3 Tag Record

Step 1. In search result, click Tag and select tag display method, see Figure 9-9.

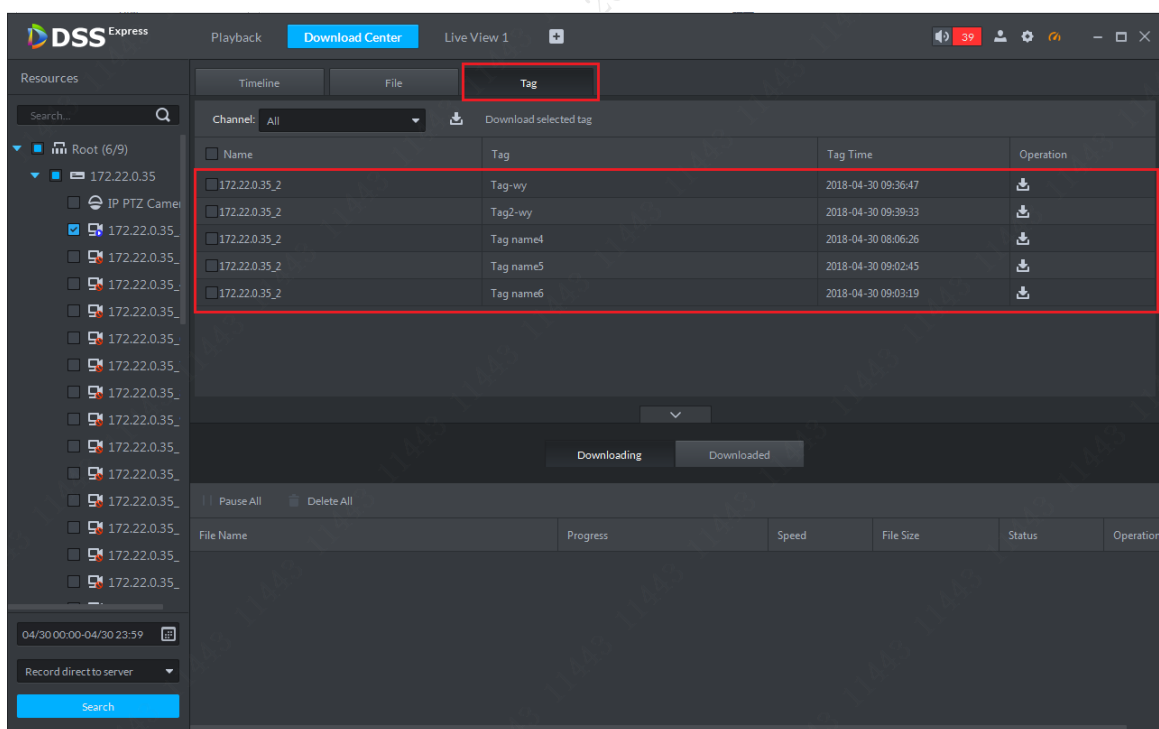


Figure 9-9

Step 2. A user can check more than one record file to download. Click Download button to batch download, or you can click corresponding download button of a record file. A prompt box pops up, please select length of tagged record you want to download and select record format. Then click OK. See Figure 9-10.

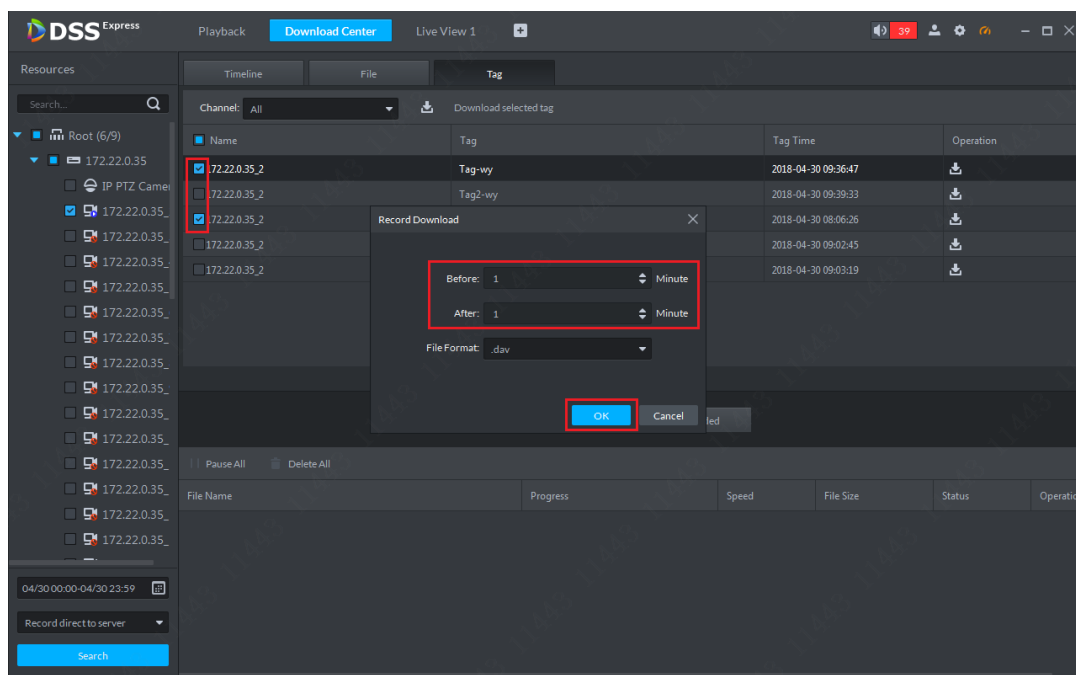


Figure 9-10

9.2 Download Management

9.2.1 Download Complete

After download is complete, the system will auto pop up a box at the lower right corner, see Figure 9-11. Click folder icon to enter the folder.

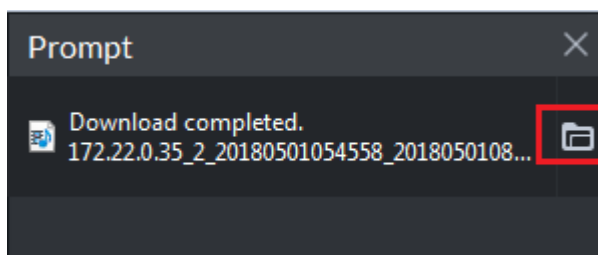


Figure 9-11

9.2.2 Pause/Start Download

In download management page, you can pause all current download tasks or a specific task, control button is shown in Figure 9-12. Button 1 is pause all, and button 2 is pause one task. To start task(s) again, buttons are shown in Figure 9-13.

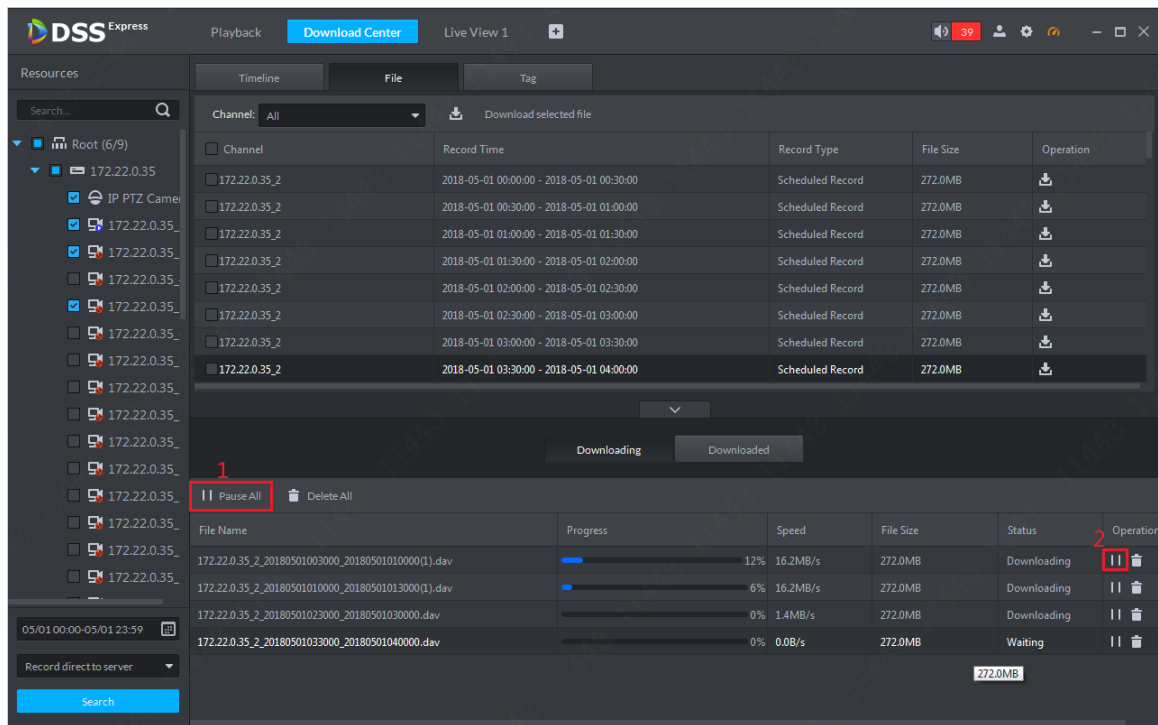


Figure 9-12

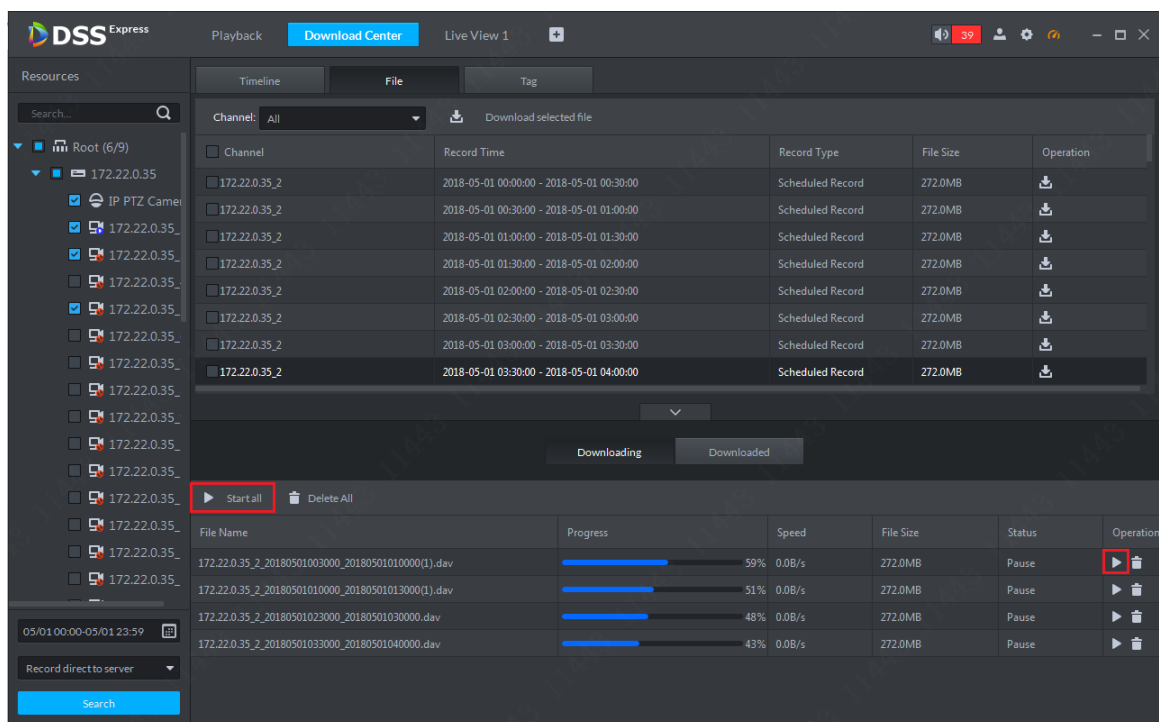


Figure 9-13

9.2.3 Delete Download Task

For task in downloading or paused, you can delete it accordingly, control button is shown in Figure 9-14. Button 1 is to delete all tasks in list. Button 2 is to delete corresponding task. Please select as you need, and please be aware that no prompt will appear.

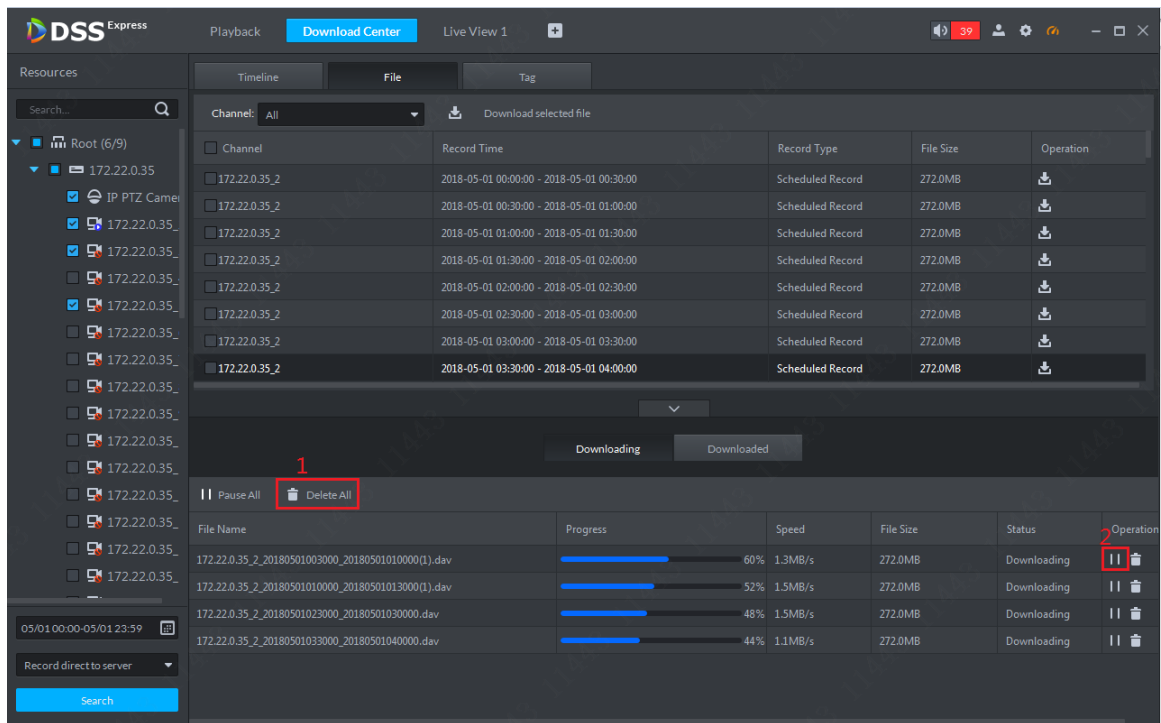


Figure 9-14

10 Map Application

DSS Express platform currently supports raster map. You can set more maps at the same time. Default display is map which set as main map by you.

10.1 Add Map

Step 1. When you first time enter map application module, map info is blank. The system will prompt you to add map info, please follow instructions and click Here to add map picture. See Figure 10-1.

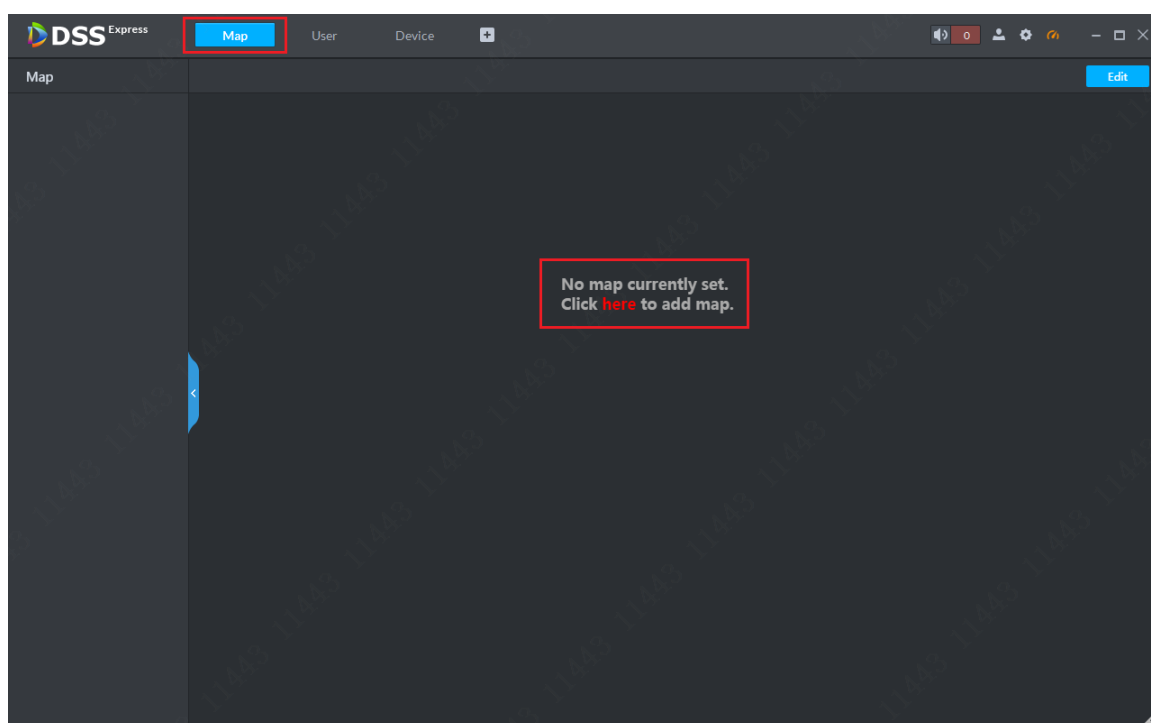


Figure 10-1

Step 2. Please set map name as you need, and select picture file. Then click OK button to add.

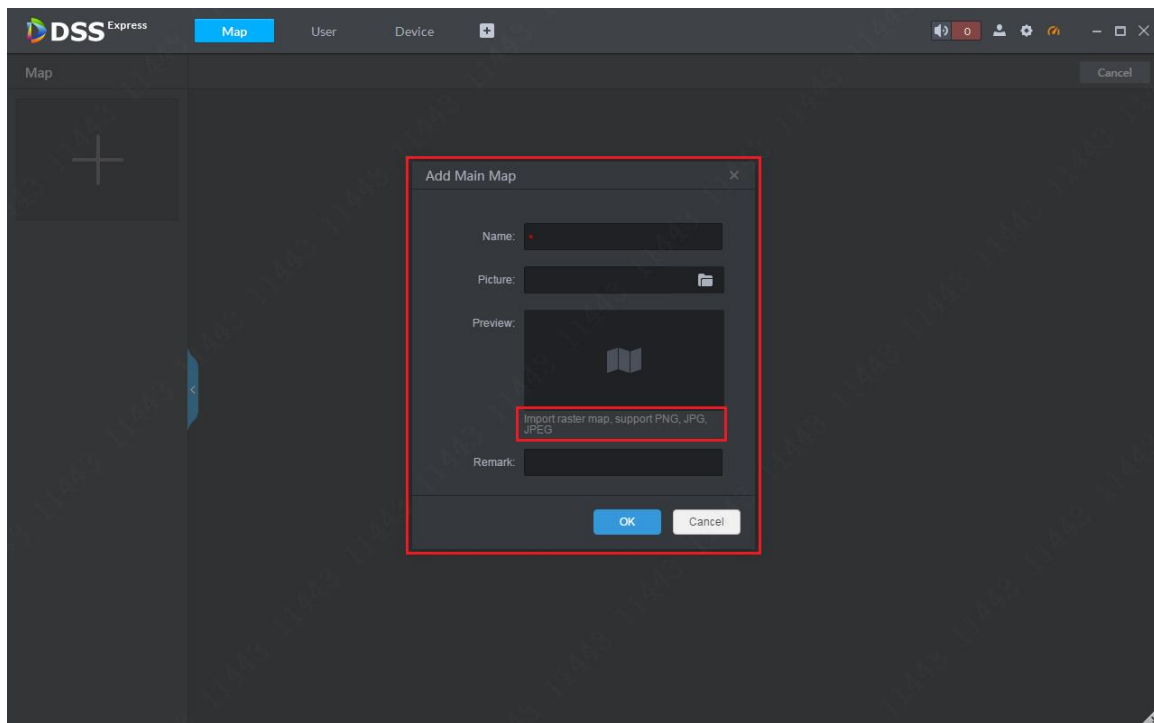


Figure 10-2

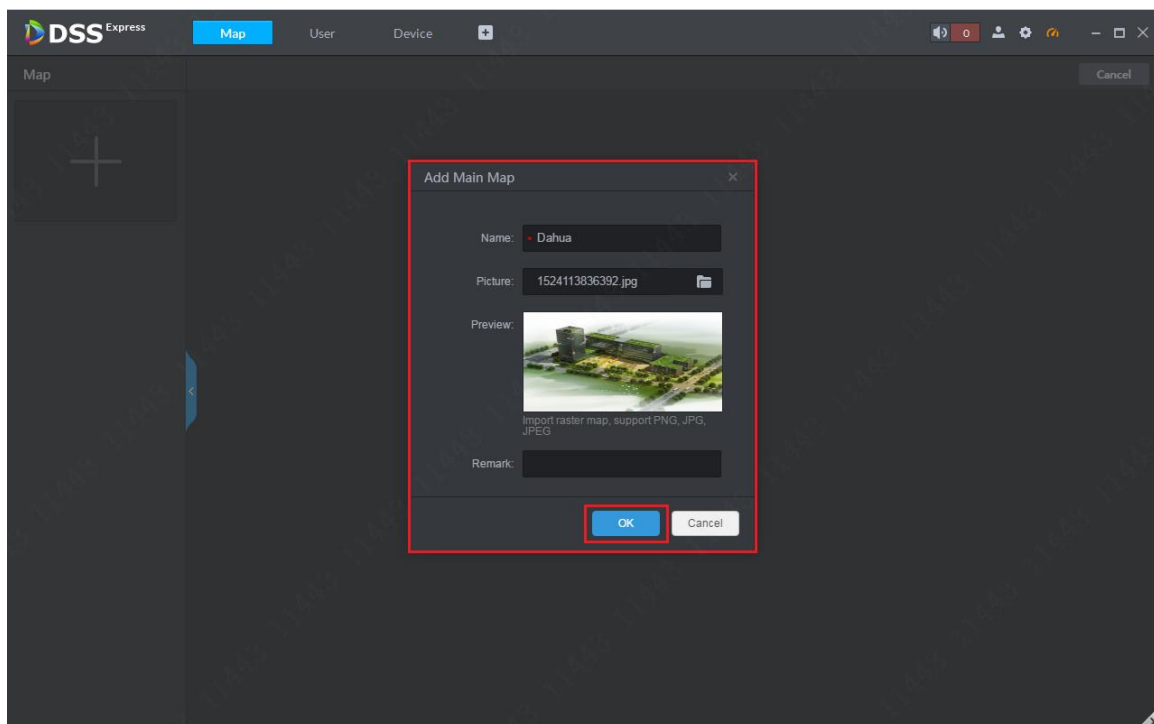


Figure 10-3

Step 3. After you complete adding of map, you can scroll mouse to zoom in.

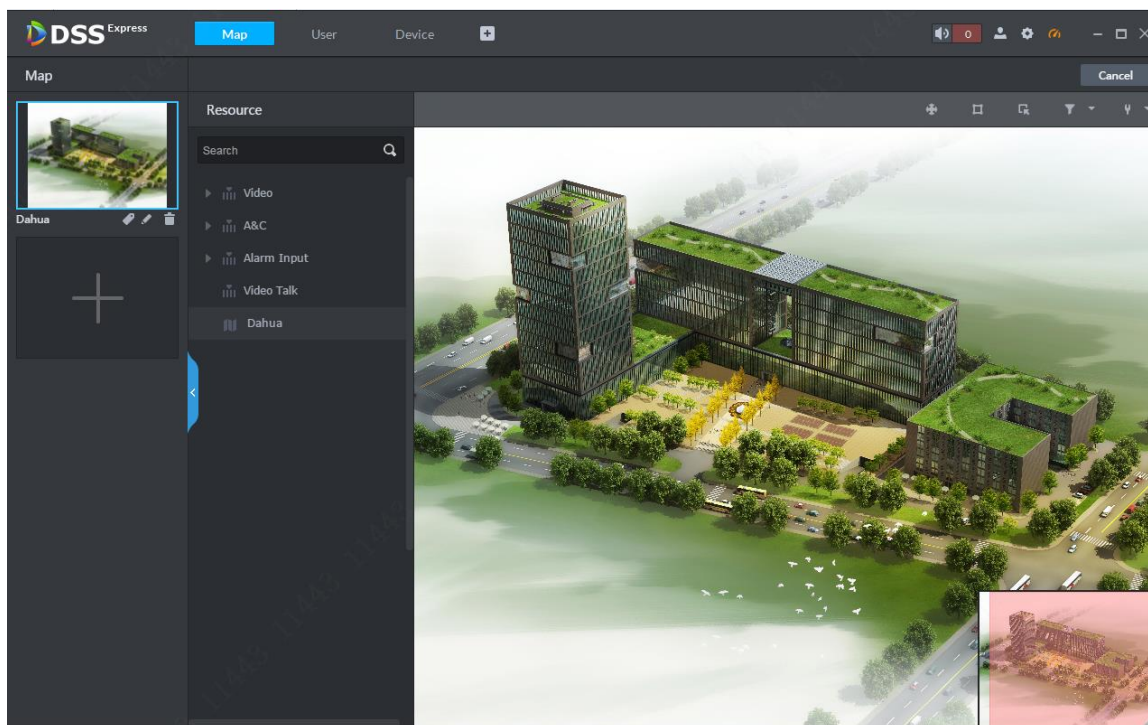


Figure 10-4

Step 4. In device list, expand device info. You can drag video channel, access control channel, alarm channel into map as you want, see Figure 10-5. In map edit mode, all operations take effective immediately.

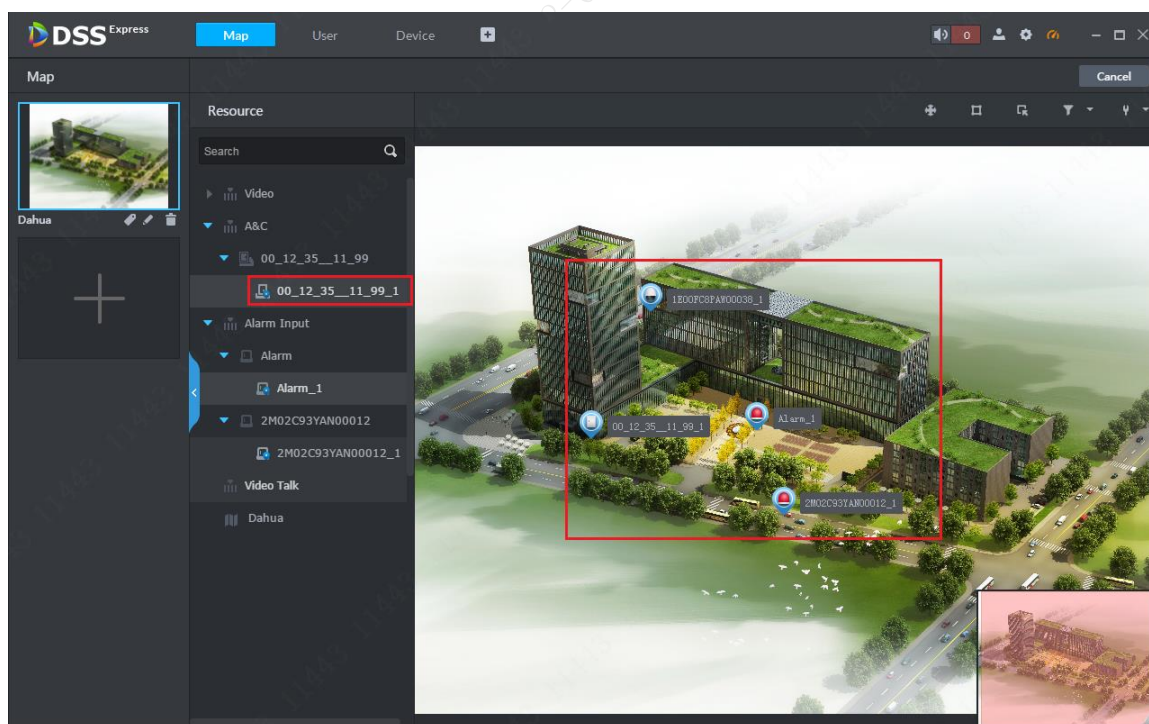



Figure 10-5

Step 5. If you need to adjust position of each channel on the map, please click  button first to enable drag function. See Figure 10-6. When the button changes to blue, then you can move it. After you adjust position, please click it again to disable drag function.

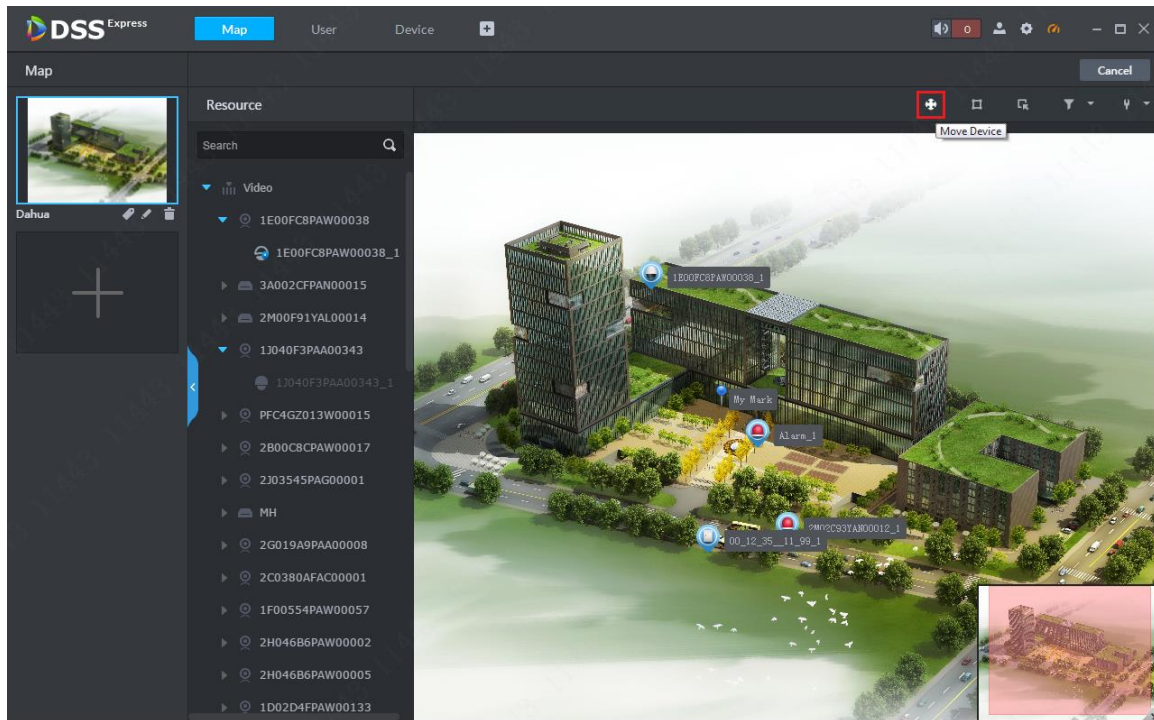


Figure 10-6

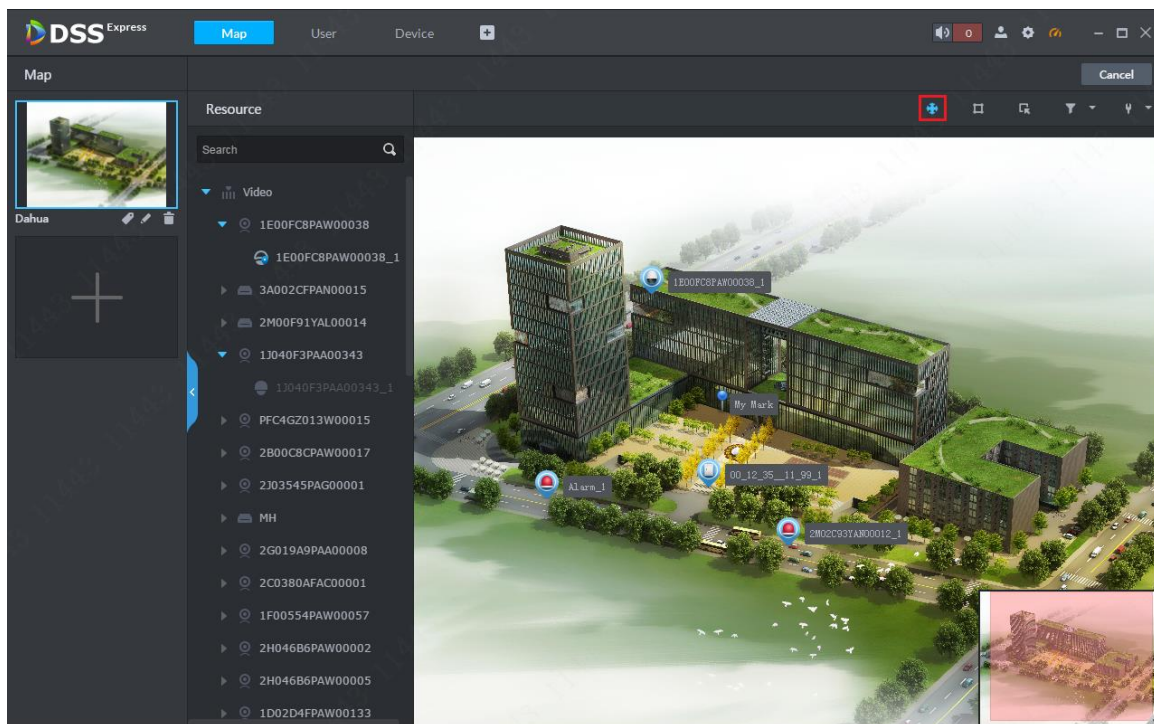







Figure 10-7

-  device position move enable: enable it then you can move channel on map.
-  sub map add: click to and select position of sub map, click mouse to add.
-  pane button: click it and pane device on map, which forms a temporary preview, playback, delete and etc.
-  device type filter: click it and select device type you want to show on map.

-  mark and reset.

10.2 Add Sub Map

One map can have multiple layers, and in map editing status, click  button to add sub map:

Step 1. In map application mode, select map you want to add as sub map, click Edit to enter map edit mode, see Figure 10-8.

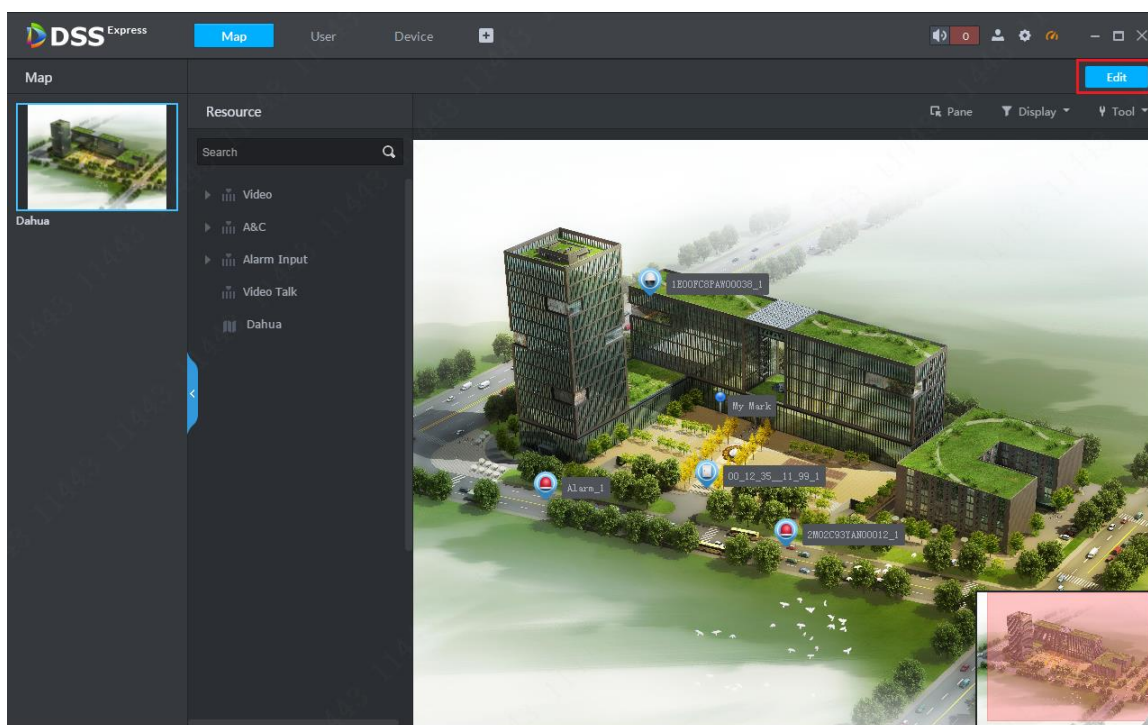


Figure 10-8

Step 2. In edit mode, click sub map add button , see Figure 10-9.

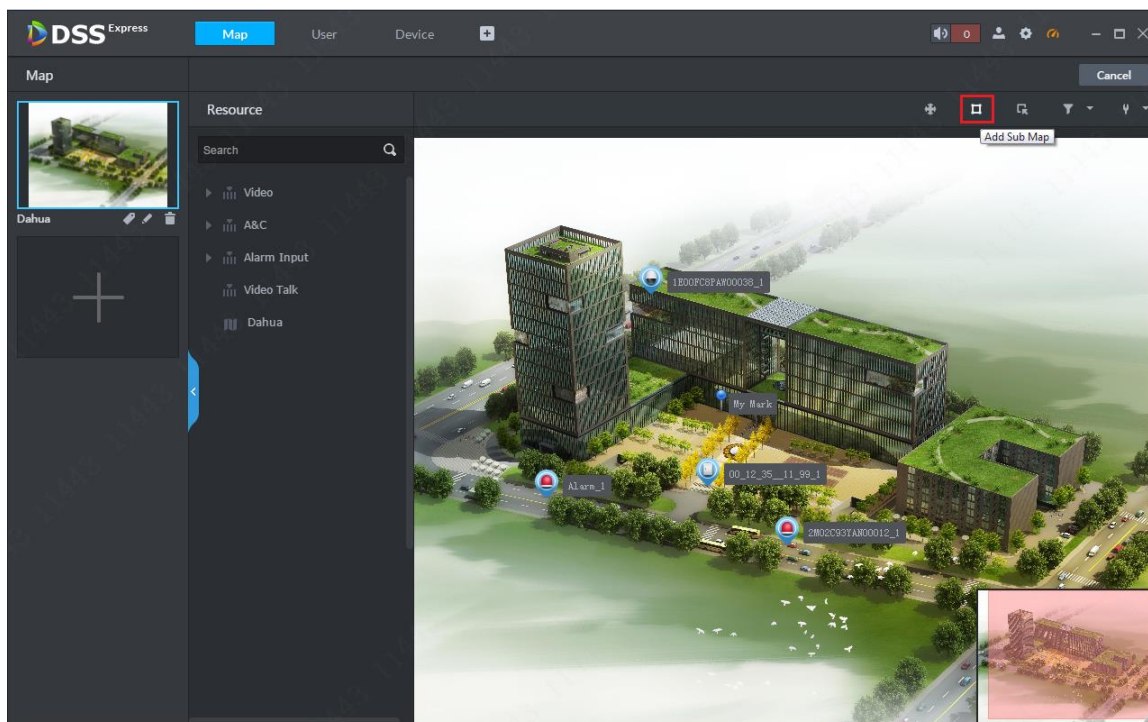


Figure 10-9

Step 3. Click add button, and the mouse will turn into a map icon. On map, select target position and left click mouse to add map, see Figure 10-10.

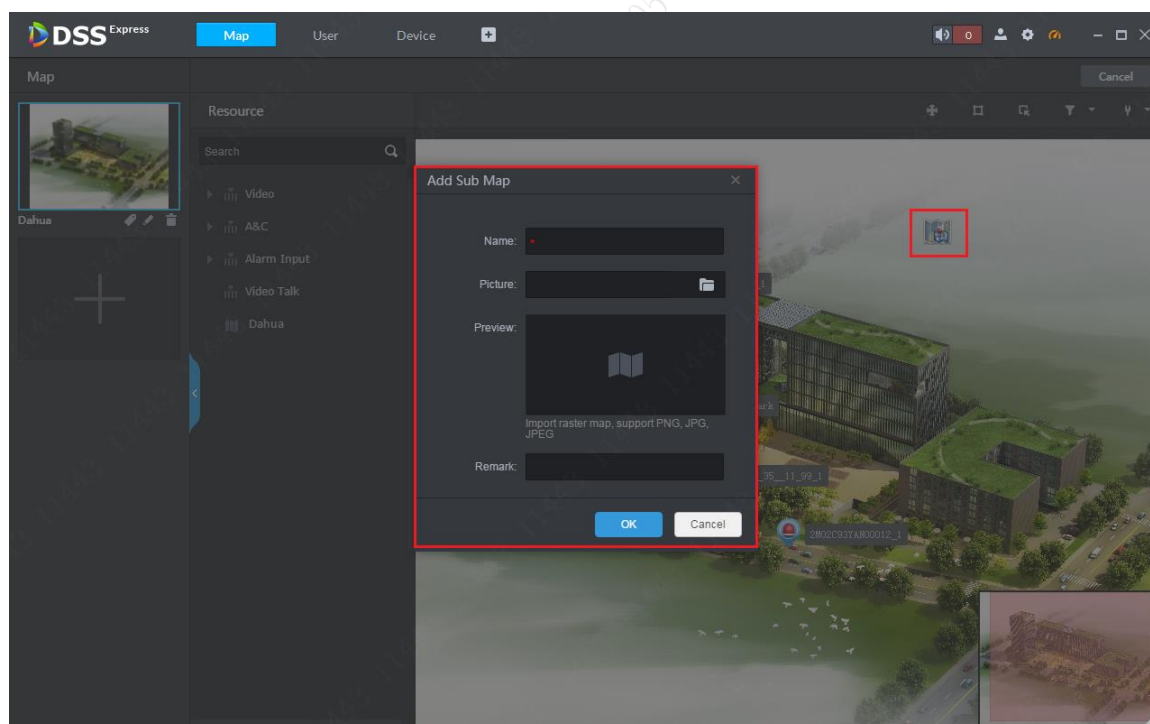


Figure 10-10

Step 4. After sub map is added, double click to enter sub map page. If you want to add lower-level map in the sub map, the steps are same as above.

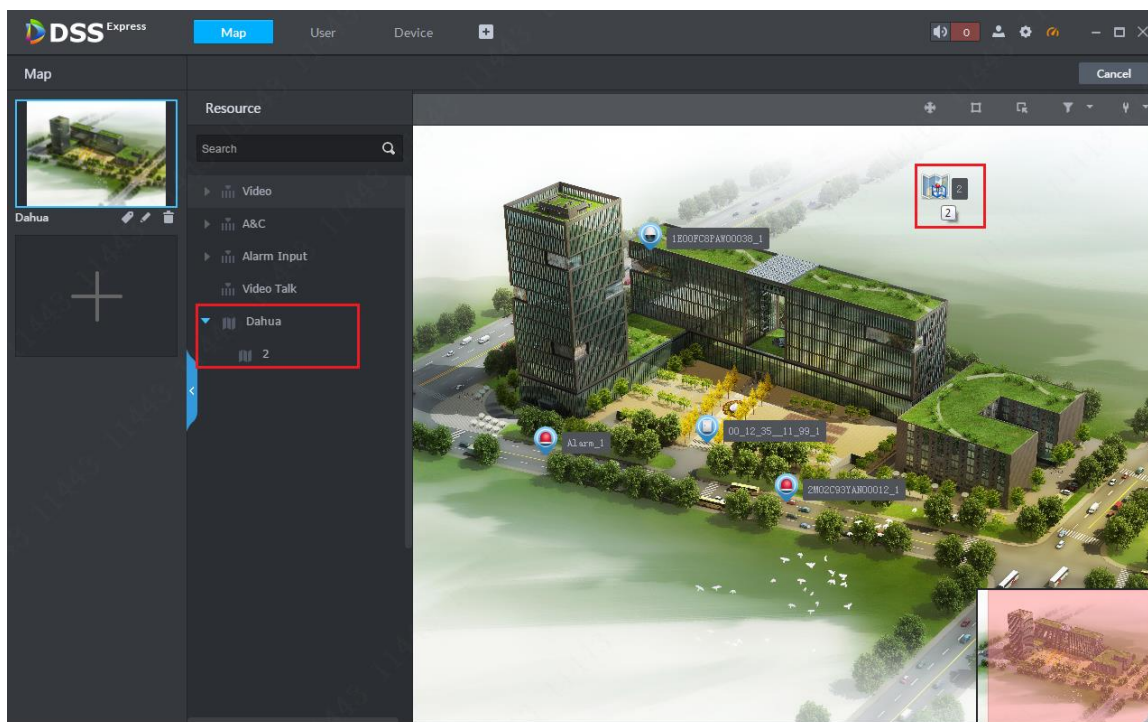


Figure 10-11

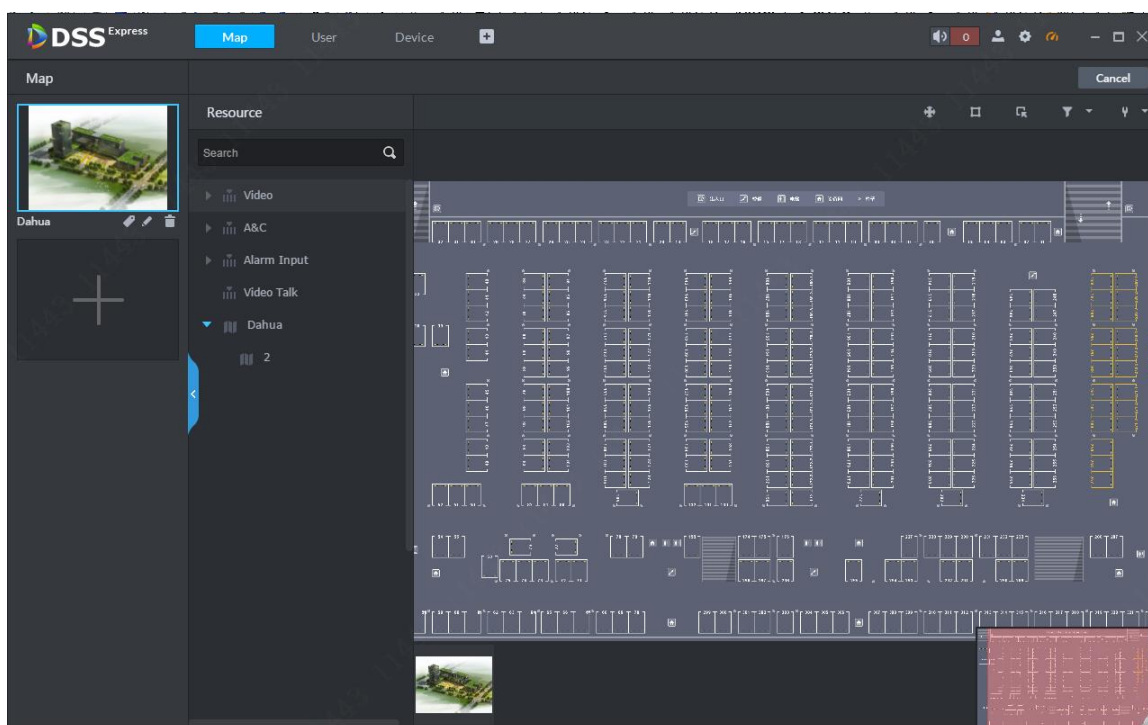


Figure 10-12

10.3 Add More Maps

DSS Express supports multiple maps, to add:

- Step 1. In map application mode, select map you want to add sub map, click Edit to enter edit mode, see Figure 10-13.

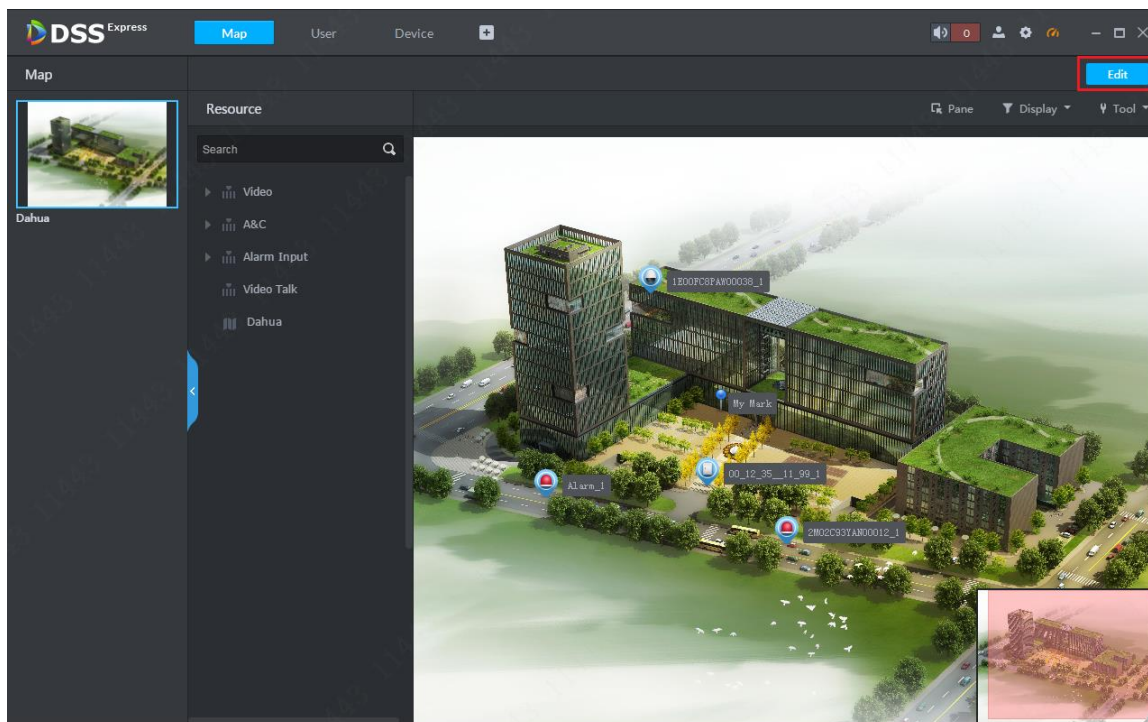


Figure 10-13

Step 2. On the left, click Add button to add map, see Figure 10-14.

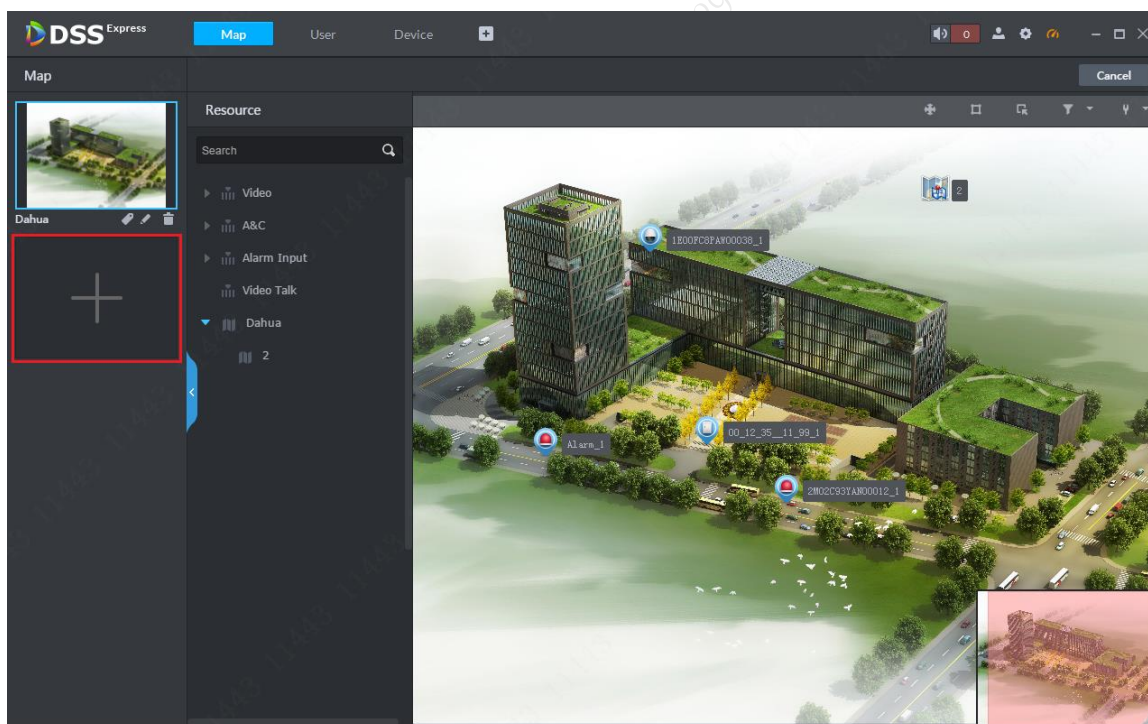


Figure 10-14

Step 3. In this page, set map name as you need, and select map picture, click OK. See Figure 10-15.

11 Event

Event manager includes alarm scheme config and alarm processing. Firstly you must set alarm scheme of actual channel you need in config.

11.1 Alarm Scheme Config

Step 1. In Client homepage, click Config icon to enter config module, see Figure 11-1.

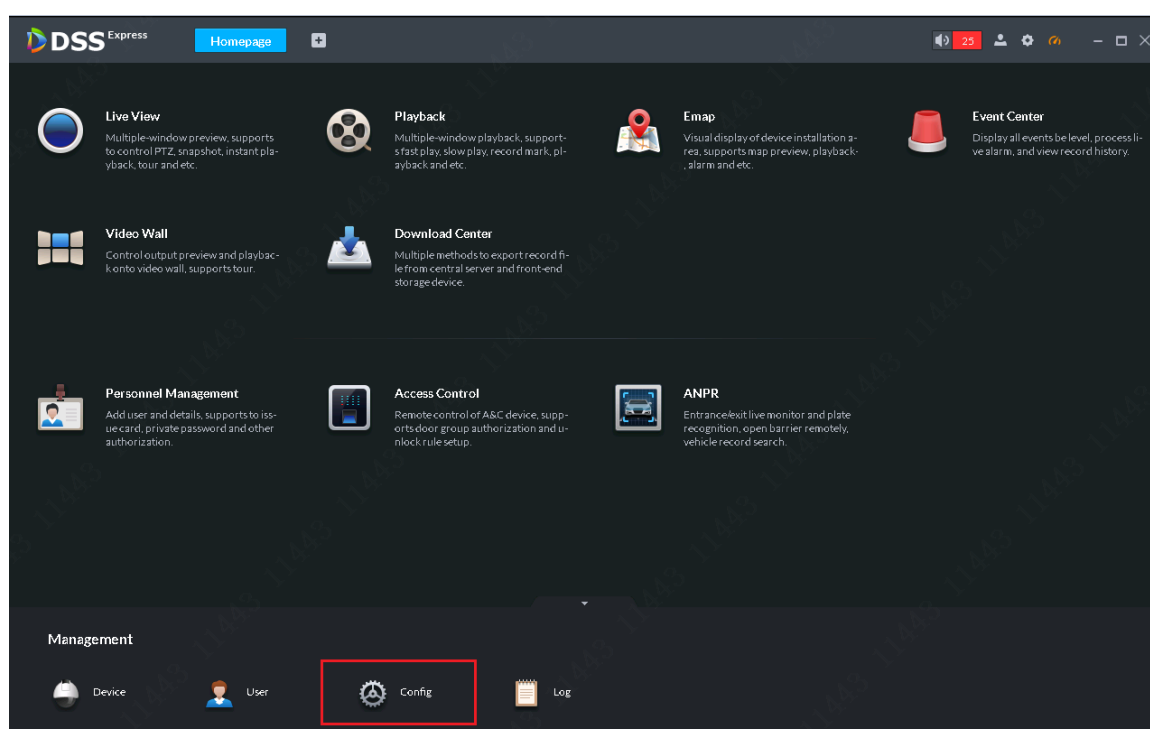


Figure 11-1

Step 2. Config page is shown. After you enter config module, select device/channel to set alarm scheme, and click Event Configuration button to enter event config page.

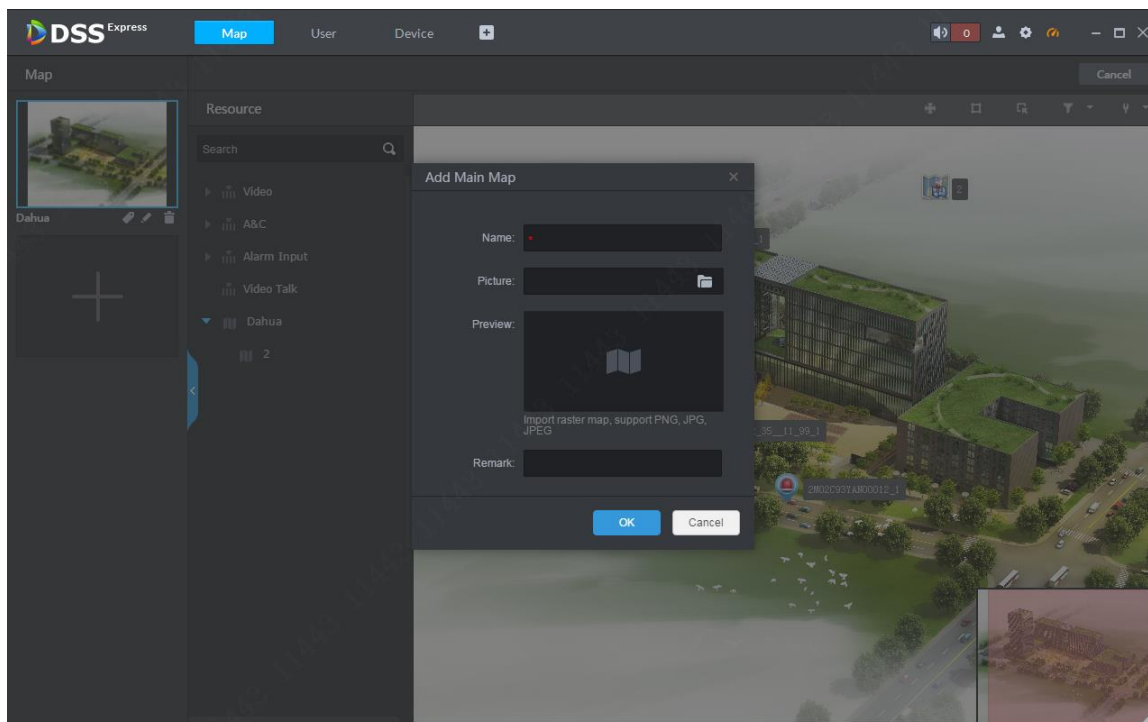


Figure 10-15

Step 4. After you complete adding of multiple maps, see Figure 10-16.

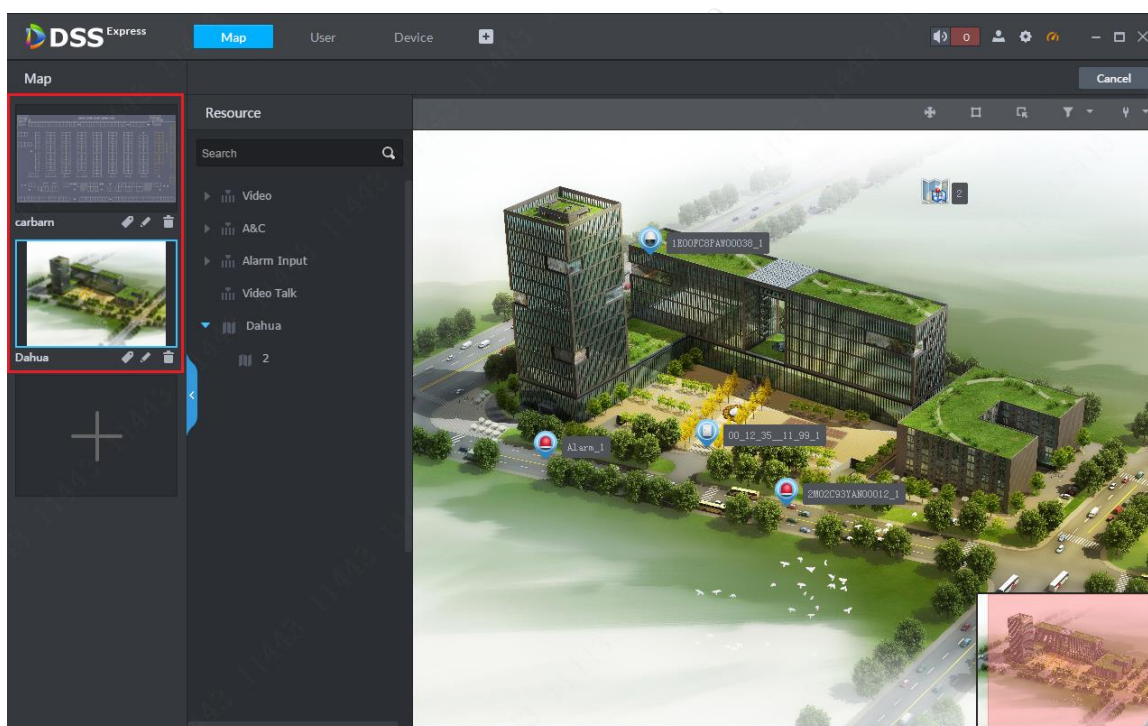


Figure 10-16

10.4 Map Application

10.4.1 Main Map Setup

When you add more than one map, you can set default map as main map, please select this map and

click button in the figure below. After setup is complete, you can see a yellow icon. See Figure 10-17 and Figure 10-18.

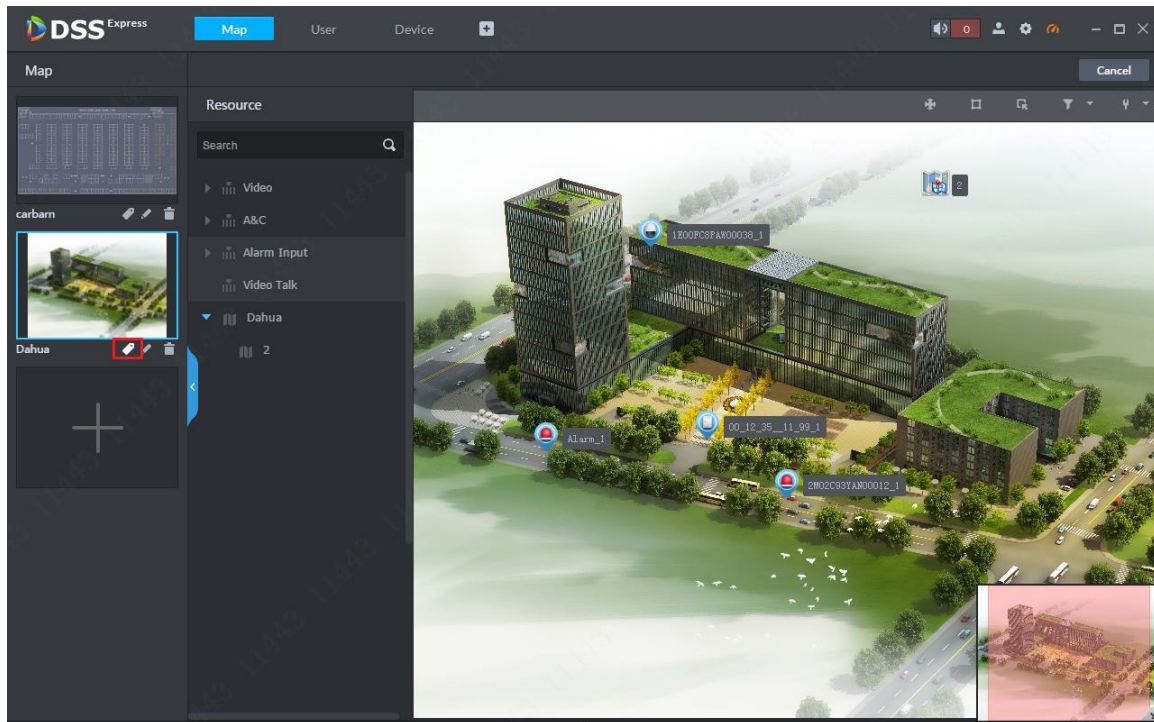


Figure 10-17

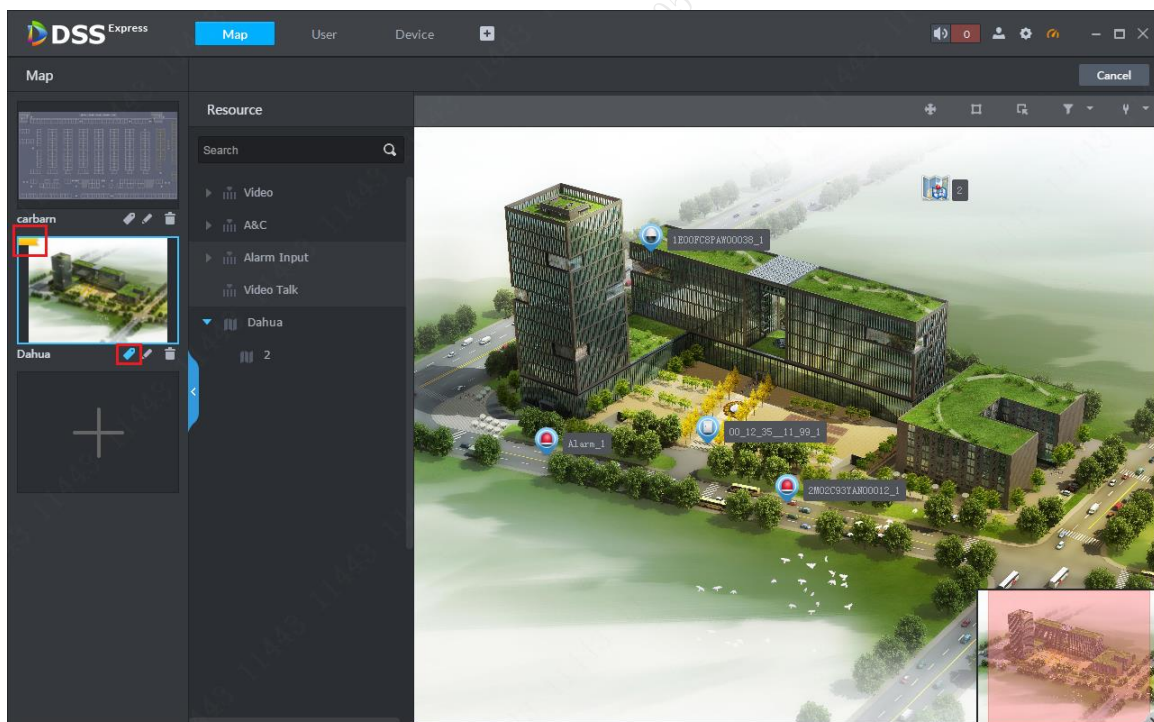


Figure 10-18

10.4.2 Pane Application

In map application, you can pane device to preview, playback.

Step 1. In map application, click pane button and in map pane area, it will generate a

temporary list. In this list, you can select channel to preview and playback.

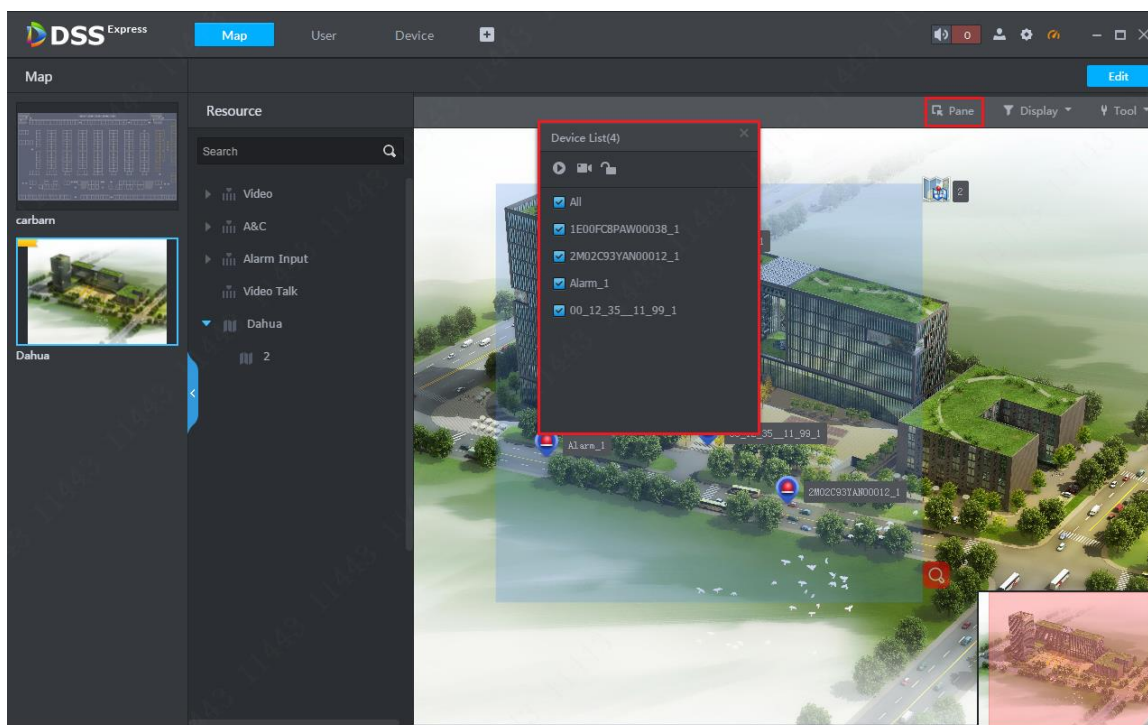




Figure 10-19

Step 2. After you select device, click preview button  on map to preview.

10.4.3 Filter Device Type

On map, you can set display/no display of certain types of device. Click  Display button to show type selection. See Figure 10-20. If you do not want to show video channel, just uncheck it. See Figure 10-21.

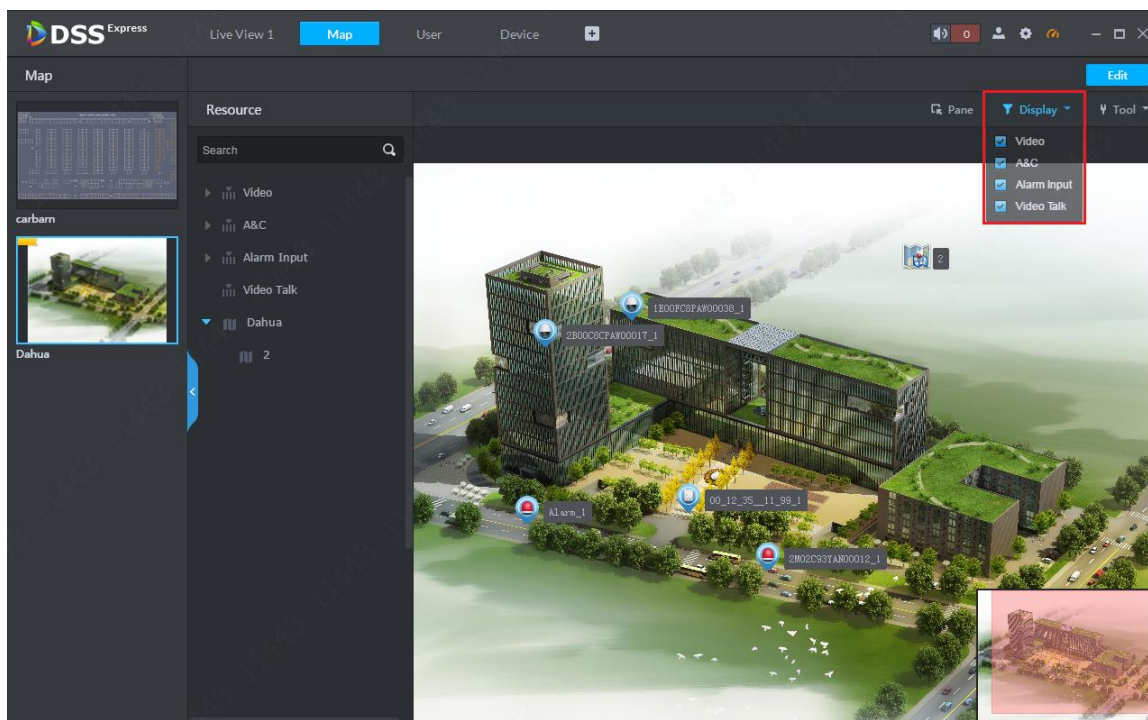


Figure 10-20

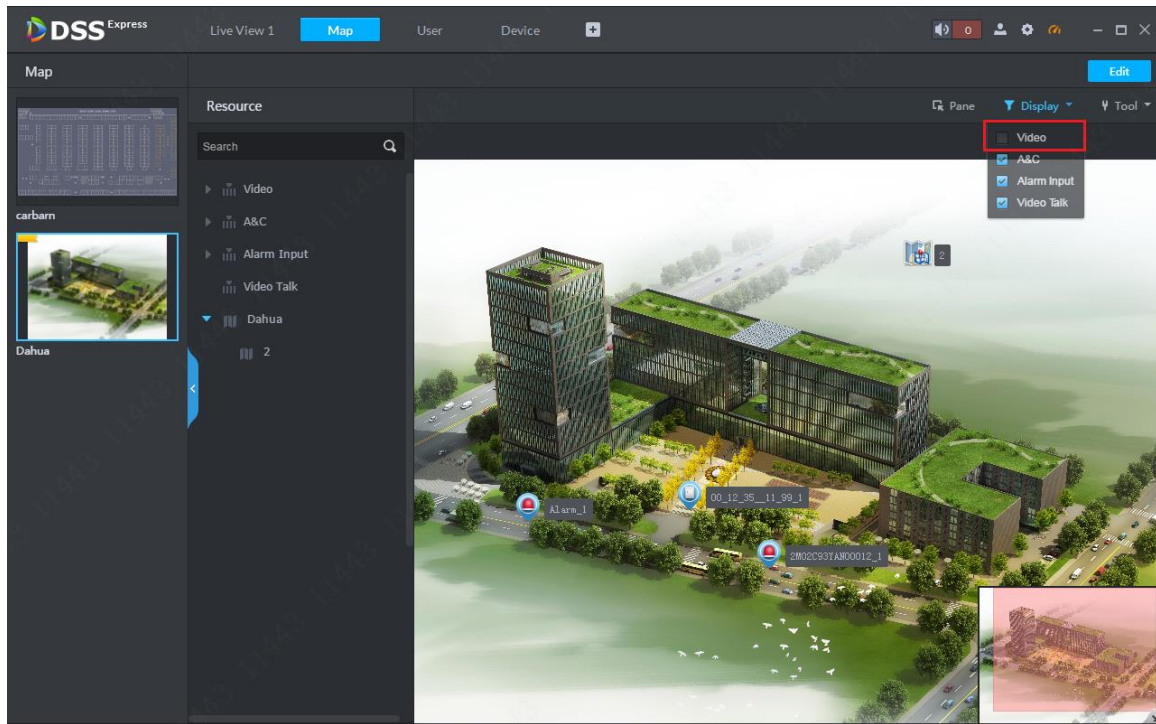


Figure 10-21

10.4.4 Tool

In tool of map, you can set mark on map and restore default size of map. See Figure 10-22. In map application page, click **Tool** button and select content to execute, effect is in Figure 10-23.

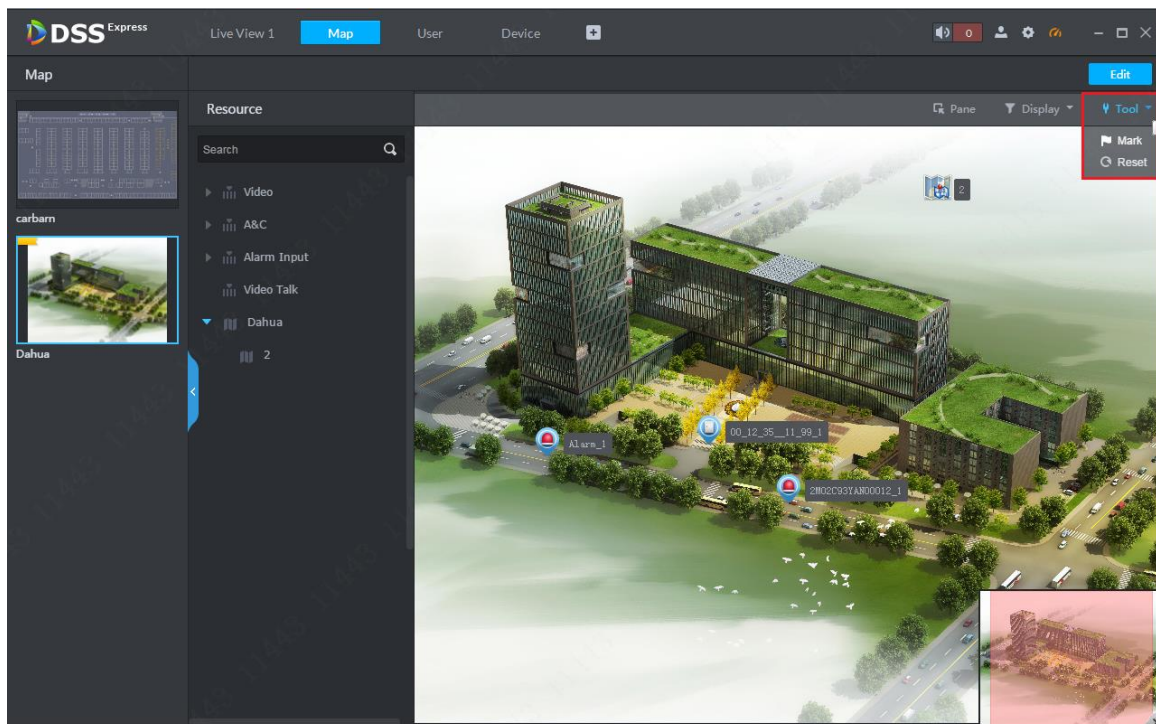


Figure 10-22