

BAR ONE Unipod

The BAR ONE Unipod is a new and unique single arm unipod turnstile. The minimal space saving design provides a compact anti-tailgating solution. The MDD motor drive allows for an increased number of transits making it ideal for high traffic environments where secure access is required. Unlike standard tripod designs the BAR ONE is also available as a wide access lane.

MAIN FEATURES

- High throughput single arm unipod
- Silent and smooth motor drive
- Space saving cabinet design
- Wide lane access – extended arm*

*Optional Feature

DIMENSIONS

Cabinet height: 990mm
Cabinet length: 990mm
Cabinet width: 210mm

PASSAGE WIDTH

Standard width: 550mm
Max passage width: 570mm (900mm wide access lane)

NUMBER OF ARMS

Single Arm Ø 40mm

BASE AND HOUSING

Brushed Stainless Steel

TOP LID

Brushed Stainless Steel with plastic ends

BARRIER TYPE

Brushed stainless steel

POWER SUPPLY

13.8V DC/ 24V AC/ 230V AC

COMMUNICATION INTERFACE

RS485/ USB/ Ethernet



CRAWL UNDER AND CLIMBOVER DETECTION

Yes - electronic detection*

RANGE OF OPERATING TEMPERATURE

-25°C to +60°C*

OPERATING ENVIRONMENT

Indoor / Outdoor*

EMERGENCY MODE

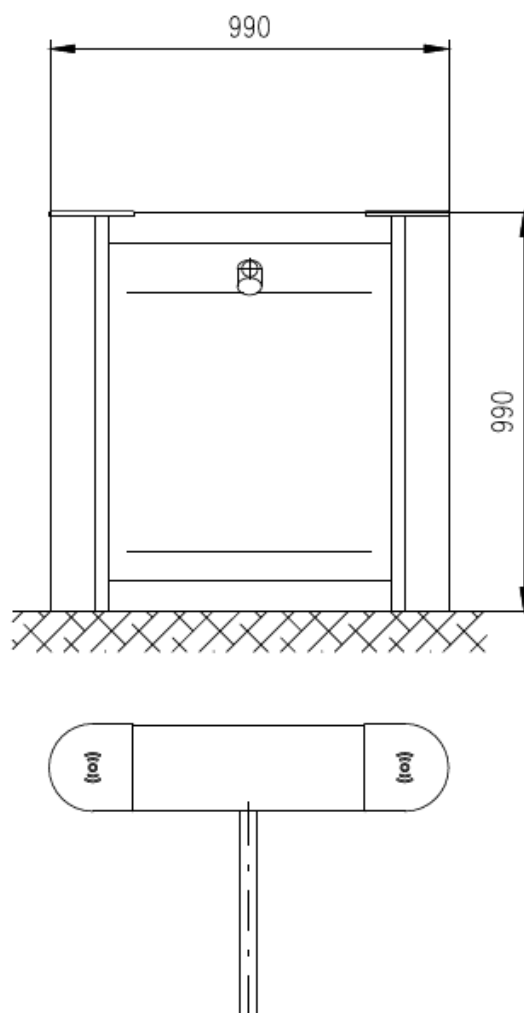
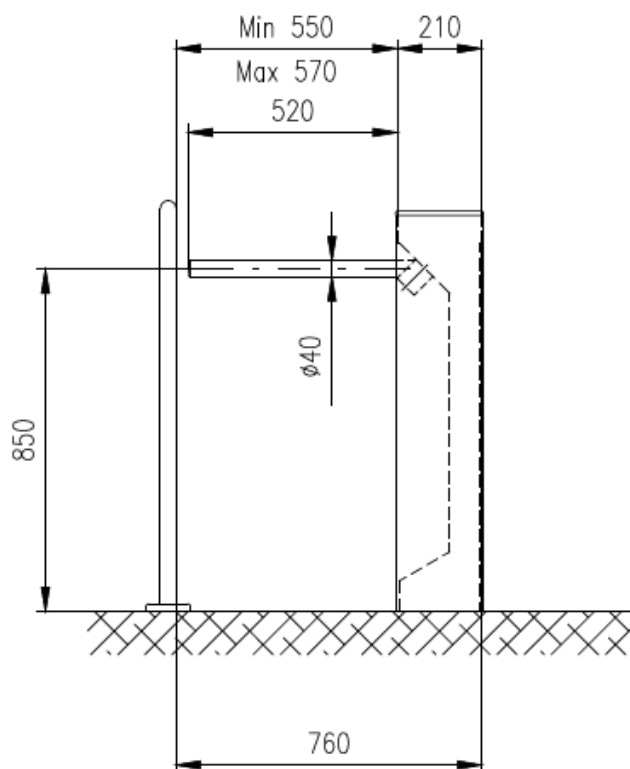
On receipt of signal the arm drops to allow free passage (with optional power back-up)

BRAKE CONTROL FUNCTION

Hardened tooth lock break

OPTIONAL ACCESSORIES

- RFID reader bracket
- Access light
- LED lane light
- Outdoor package
- WAV player
- Infrared anti climb sensors
- Easy Touch/ Touch Panel
- Supercapacitor
- Alternative surface finishes
- Optional top finishes
- Ramp LT



As our policy is to continually improve the products we offer, we reserve the right to amend specifications without prior notice. Further product drawings are available on request