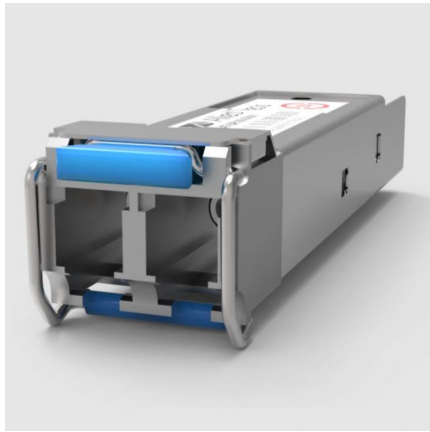


Allied Telesis AT-SPLX10-I Datasheet



Allied Telesis AT-SPLX10/I 1000LX SFP, LC, SMF, 1310nm, (10 km), I-Temp SFP Transceiver Module

AT-SPLX10-I

Allied Telesis AT-SPLX10/I 1000LX SFP, LC, SMF, 1310nm, (10 km), I-Temp SFP Transceiver Module

The Allied Telesis SP Series delivers flexible, full-duplex Ethernet connectivity. These hot-swappable fiber and copper interfaces simply plug into the SFP slot on all SFP-compatible devices. Configuration can be optimized to meet a wide variety of distance and service requirements. 1000LX SFP, LC, SMF, 1310 nm, (10 km), I-Temp

Specifications

- Part Number: AT-SPLX10/I
- Fiber Tyep: SMF
- Connector: LC
- Maximum Distance: 10km
- Wavelength: 1310nm
- DDM: Yes
- Transmit: -9 ~ -3 dBm
- Receive Sensitivity: -19dBm
- Power Budget: 10dBm
- Over-load: -3dBm
- Operating Temperature: -40°C to 85°C (-40°F to 185°F)

Fore more information of this Allied Telesis AT-SPLX10/I, please visit Allied Telesis website:

<https://www.alliedtelesis.com/us/en/products/transceivers/1G/splx10i>

[Buy Now](#)