

PRODUCT TECHNICAL DATASHEET

BG30/2204

Brushless 

Intensive use 

Digital Encoder 

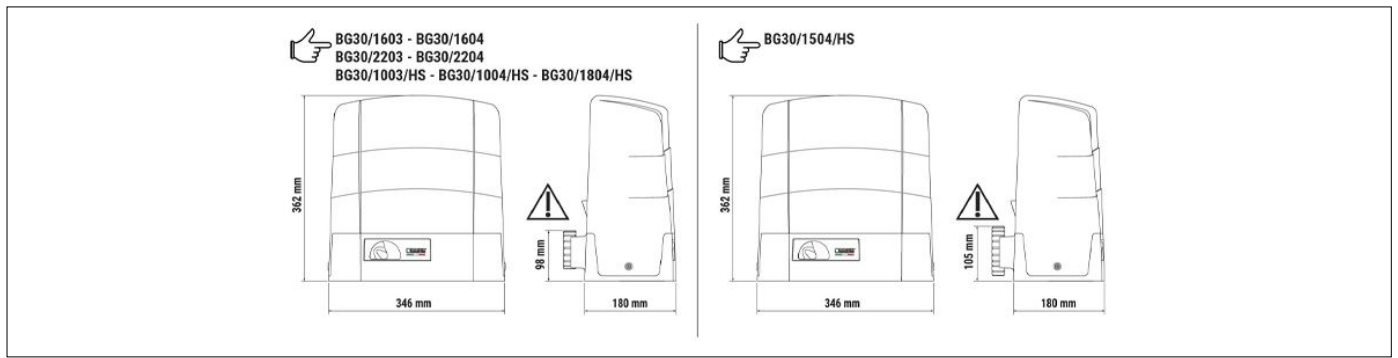
Magnetic limit switch 



CODE	DESCRIPTION	PCS/PALLET
BG30/2204	Electromechanical BRUSHLESS motor, low voltage, super intensive use, with native encoder onboard, irreversible ideal for sliding gates up to 2200 kg with built-in digital controller B70 series, magnetic limit switch.	30

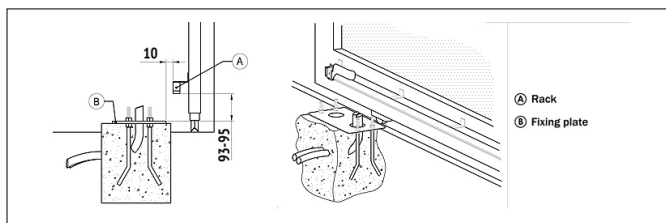
PRODUCT TECHNICAL SPECIFICATIONS	
Max gate weight	2200 kg
Power line supply	230V AC - 50Hz
Motor power supply	36V
Power rating	470W
Frequency of use	Intensive use
Thrust	50 - 1700N
Operating temperature	-20+55°C
Protection level	IP44
Reductor Type	Irreversible
Manoeuvre speed	12 m/min (0.16 m/s)
Limit switch	Magnetic
Onboard control unit	B70/1DCHP
Encoder	Digital native encoder + magnetic digital SENSORED, 4096 PPR
Batteries recovery	Optional 2 external battery 12V 4,5AH
Type exit gear	Z17/mod 4
Operating cycles per day (opening/closing - 24 hours no stop)	1000
Maximum dimension product in mm (L x W x H)	346 x 180 x 362
Product weight packed (Kg)	20,3

PRODUCT DIMENSIONS AND PREPARING FOR INSTALLATION

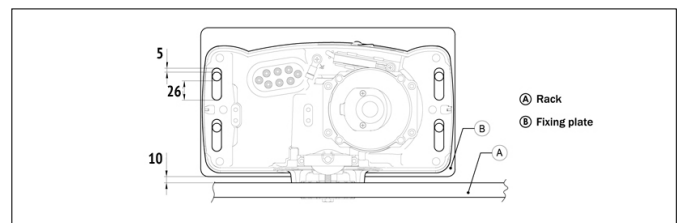


DIMENSIONS

PRODUCT PREPARING FOR INSTALLATION



PREDISPOSITION FOR STANDARD INSTALLATION



PREDISPOSITION FOR STANDARD INSTALLATION

PRODUCT ACCESSORIES



B71/BCHP/EXT
Kit for emergency batteries charger for Brushless digital controller EDGE1/BOX - B70/1DCHP 36V DC with plug-in card, with 2 recovery batteries 12V DC, 4.5 Ah. Box case included.



B71/BCHP/BOX
Kit for emergency batteries charger for Brushless digital controller EDGE1/BOX - B70/1DCHP 36V DC. Box case included and without recovery batteries.



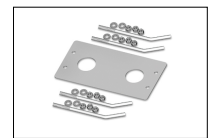
B71/PBX36/BOX
Hybrid inverter, "Network Assisted" version, for powering the automation. Also provides a battery-charger function thanks to the connection to the solar panels or mains supply for powering the 36V DC brushless digital controllers with a mains voltage of 230V AC.



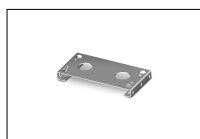
B71/PBX36/BOX/115
Hybrid inverter, "Network Assisted" version, for powering the automation. Also provides a battery-charger function thanks to the connection to the solar panels or mains supply for powering the 36V DC brushless digital controllers with a mains voltage of 115V AC.



B71/PBX/BOX
Hybrid inverter, "Full Solar" version, for powering the automation. Also provides a battery-charger function thanks to the connection to the solar panels for powering the brushless digital controllers.



KT215
Fixing plate with stay bolts and screws G30 series.



KT222
Raised fixing plate for G30 series (+3,5 cm).



HT421
External box without batteries, for battery BT12V45 (4,5 Ah), BT12V70 (7 Ah) and BT12V120 (12 Ah), up to a maximum of 3 batteries.



HT422
Plastic box for control unit F70/IPU36/BOX/SL.



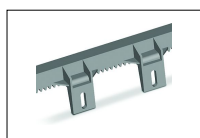
GA550
Galvanised steel rack 22x22x1000 module 4.



GA551
Galvanised steel rack 30x12x1000 module 4 with spacers and screws.



GA554
Pocket of 6 spacers (2,5 cm) and screws.



GA553
Nylon rack module 4 with 6 connectors L.1000.



GA557
Roger Technology nylon rack module 4 with 6 connectors L.1000.



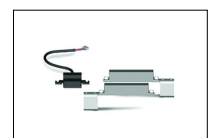
GA558
Roger Technology nylon rack module 6 with 6 connectors L.1000.



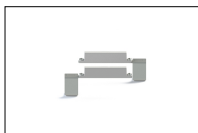
LT328
Pinion Z17 mod. 4 with increased thickness H.38 for series R30 - G30 - E30 (except BG30/1504/HS).



LT331
Pinion Z11 mod. 6 only for series G30 - BG30 (except BG30/1504/HS).



MC775
Kit magnetic limit switch for control unit H70/103AC, H70/104AC, B70/1DC, B70/1DCHP.



MC783

Pair of increased magnets for magnetic limit switch, only for GAS58.



B74/BCONNECT

Module WI-FI B-CONNECT - Remote management and programming system in IP and CLOUD web browser mode via WI-FI hot spot P2P connection for Brushless control units (B70/2ML - EDGE1 - CTRL - CTRL/P - B70/1DCHP).



R99/C/001AL

Signboard "Automatic Opening" Aluminium version.



R99/C/001

Signboard "Automatic Opening".